

**RUNNING THE FREE
EVALUATION VERSIONS OF
"WINDOWS 7" "WINDOWS 8",
OR "WINDOWS 8.1"
IN YOUR MAC
USING "BOOT CAMP"**

by Francis Chao
fchao2@yahoo.com



Web location for this
presentation:

<http://aztcs.org>

Click on

“Meeting Notes”

SUMMARY

Using the Mac's "Boot Camp" capability, you can install a free, time-limited copy of "Windows 7", "Windows 8", or "Windows 8.1" into your Mac.

After doing so, your Mac can dual boot between its native "OS X" operating system and the free trial edition of "Windows..".

TOPICS

- "Boot Camp" Basics
- Free Trial Editions of "Windows.." from Microsoft

TOPICS (continued)

- "Obtaining the "Windows 7 Enterprise Trial"
- Obtaining the "Windows 8 Enterprise Evaluation"
- Obtaining the "Windows 8.1 Enterprise Evaluation"

TOPICS (continues)

- Installing "Windows.." Into Your Mac Using the "Boot Camp" Applet In "OS X"
- Install Apple's "Boot Camp Support" software Into the "Windows.." Operating System
- Running "Windows.." Inside A Boot Camp Partition

TOPICS (continues)

- Using the "Windows 7 Enterprise Trial"
- Using the "Windows 8 Enterprise Evaluation"
- Using the "Windows 8.1 Enterprise Evaluation"

"BOOT CAMP" BASICS

"BOOT CAMP" BASICS

- "Boot Camp" has been a part of Apple's "OS X" operating system since "OS X 10.4" ("Tiger").
- Using "Boot Camp", you can create a dual boot configuration for a Mac so that you can select between Apple's "OS X" operating system and a "Windows.."

"BOOT CAMP" BASICS (continued)

- "Boot Camp" has two parts:
"Boot Camp Assistant" is an applet that is located inside "Utilities" inside "Applications" inside Mac "OS X".
"Boot Camp" is an applet is located inside "Windows..".

"BOOT CAMP" BASICS (continued)

- When you run the **"Boot Camp Assistant"** inside Mac "OS X":
It re-partitions your Mac's internal hard drive by shrinking down your existing HPFS+ (High Performance File System Plus) partition.
It then uses the freed up space to create an NTFS partition.₁

"BOOT CAMP" BASICS (continued)

- Then, it uses the freed up space to create an NTFS partition. Next, it guides you through the installation of "Windows.." into the newly-created NTFS partition.

"BOOT CAMP" BASICS (continued)

- After the "Windows.." partition is installed, the "Boot Camp Assistant" will boot up "Windows".
- At this point, you will must locate and install Apple's **"Boot Camp Support Software"** which installs into "Windows.." as a software application program.

"BOOT CAMP" BASICS (continued)

- The installation of "**Boot Camp Support Software**" inserts various USB, Bluetooth, graphics, and network drivers into "Windows.." and two "Boot Camp" applets into "Windows..".

"BOOT CAMP" BASICS (continued)

- The installation of "**Boot Camp Support Software**" also inserts two applets into "Windows:
One applet is inside the "Control Panel"
AND
the other applet is a diamond-shaped icon in the "Notification Area" of the "Taskbar".

"BOOT CAMP" BASICS (continued)

- The "Boot Camp" capability of Mac "OS X" is the source of various claims that a Mac running "Windows.." can be a better "Windows.." computer than a regular "PC":

FREE TRIAL
EDITIONS OF
"WINDOWS.."
FROM
MICROSOFT

FREE TRIAL EDITIONS OF "WINDOWS.."

FROM MICROSOFT

- Microsoft has provide free trial editions of "Windows 7", "Windows 8", and "Windows 8.1".
- These free trial editions download as .ISO files that you can "burn" to a DVD disc.

FREE TRIAL EDITIONS OF "WINDOWS.."

FROM MICROSOFT

- Even if you intend to purchase and install a permanent copy of "Windows.." for a Boot Camp partition, we recommend that you install a free trial edition of "Windows.." first, in order to test for feasibility.

FREE TRIAL EDITIONS OF "WINDOWS.."

FROM MICROSOFT (continued)

- To download these free trial editions, you have to log in with your Microsoft account.
- These free trial editions are time limited: After a certain period of time, they time out and can no longer be used.

FREE TRIAL EDITIONS OF "WINDOWS.."

FROM MICROSOFT (continued)

- After a trial edition of "Windows.." times out, you can "re-arm" it for at least one additional time period.

OBTAINING "WINDOWS 7 ENTERPRISE TRIAL"

OBTAINING "WINDOWS 7 ENTERPRISE TRIAL"

- Go to <http://technet.microsoft.com/en-US/evalcenter/dn407368> and click on "Windows 7 Enterprise".
Download the 32-bit or 64-bit ISO file.

OBTAINING "WINDOWS 8 ENTERPRISE EVALUATION"

OBTAINING "WINDOWS 8 ENTERPRISE EVALUATION

- Go to <http://technet.microsoft.com/en-US/evalcenter/dn407368> and click on "Windows 7 Enterprise".
Download the 32-bit or 64-bit ISO file.

**OBTAINING
"WINDOWS 8.1
ENTERPRISE
EVALUATION"**

OBTAINING "WINDOWS 8.1 ENTERPRISE EVALUATION

- Go to

<http://technet.microsoft.com/e>

[n-](#)

[us/evalcenter/hh699156.aspx](#)

Download the 32-bit or 64-bit
ISO file.

**INSTALLING
"WINDOWS.." INTO
YOUR MAC USING
THE "BOOT CAMP"
APPLET IN "OS X"**

INSTALLING "WINDOWS.." INTO YOUR MAC USING THE "BOOT CAMP" APPLET

- Go to "Application" on the "Dock"
- Use the down arrow key until you see "Utilities"
- Click once on "Utilities"
- Click once or twice on "Boot Camp Assistant"

INSTALLING "WINDOWS.." INTO YOUR MAC.. (continued)

- Click on the "Continue" button.
- Remove the checkmark from "Download the latest Windows support software from Apple".
- Click on the "Continue" button.

INSTALLING "WINDOWS.." INTO YOUR MAC.. (continued)

- Follow the guided steps to install "Windows.." into the "Boot Camp" partition of your Mac

INSTALLING "WINDOWS.." INTO YOUR MAC.. (continued)

- When the "Windows.." installation process requires a reboot, your Mac will probably hang with the monitor showing a "white screen". If this happens, unplug the power cord of your Mac, wait 60 seconds, then plug it back in (if it is a desktop model) OR press the power button of the Mac until it turns off (if it is a "MacBook" model). Then press the power button to restart the Mac.

INSTALL APPLE'S
"BOOT CAMP
SUPPORT
SOFTWARE" INTO
THE "WINDOWS..
OPERATING SYSTEM

INSTALL APPLE'S "BOOT CAMP SUPPORT SOFTWARE" INTO THE "WINDOWS.." OPERATING SYSTEM

- At this point, your "Windows.." partition is barely usable. To make it work well, you need to download and install Apple's "Boot Camp Support" software into "Windows..".

INSTALL APPLE'S "BOOT CAMP SUPPORT SOFTWARE" INTO "WINDOWS.." (continued)

- "Boot Camp Support" software contains various USB, Bluetooth, and graphics drivers for "Windows..".
- "Boot Camp Support" software also contains applets for the Windows "Control Panel" and the "Notification Area" of the Taskbar.

INSTALL APPLE'S "BOOT CAMP SUPPORT SOFTWARE" INTO "WINDOWS.." (continued)

- "Boot Camp Support" software can be downloaded from <http://support.apple.com/downloads/#macoscomponents>

INSTALL APPLE'S "BOOT CAMP SUPPORT SOFTWARE" INTO "WINDOWS.." (continued)

- At this Web site, you will find various versions of "Boot Camp Support Software": The various versions numbered 5.x are for "Windows 8.." and "Windows 7..".
The various versions numbered 4.x are for "Windows 7..".
The various versions number 3.x are for "Windows Vista" and "Windows XP".

INSTALL APPLE'S "BOOT CAMP SUPPORT SOFTWARE" INTO "WINDOWS.." (continued)

- A specific version of "Boot Camp Support Software" will download as a .ZIP file:

INSTALL APPLE'S "BOOT CAMP SUPPORT SOFTWARE" INTO "WINDOWS.." (continued)

- After you download the .ZIP file, double-click on it and copy the contents of the .ZIP file to the root directory of a USB flash drive or a USB hard drive. Then insert the USB flash drive or USB hard drive into the Mac that is running "Windows..".

INSTALL APPLE'S "BOOT CAMP SUPPORT SOFTWARE" INTO "WINDOWS.." (continued)

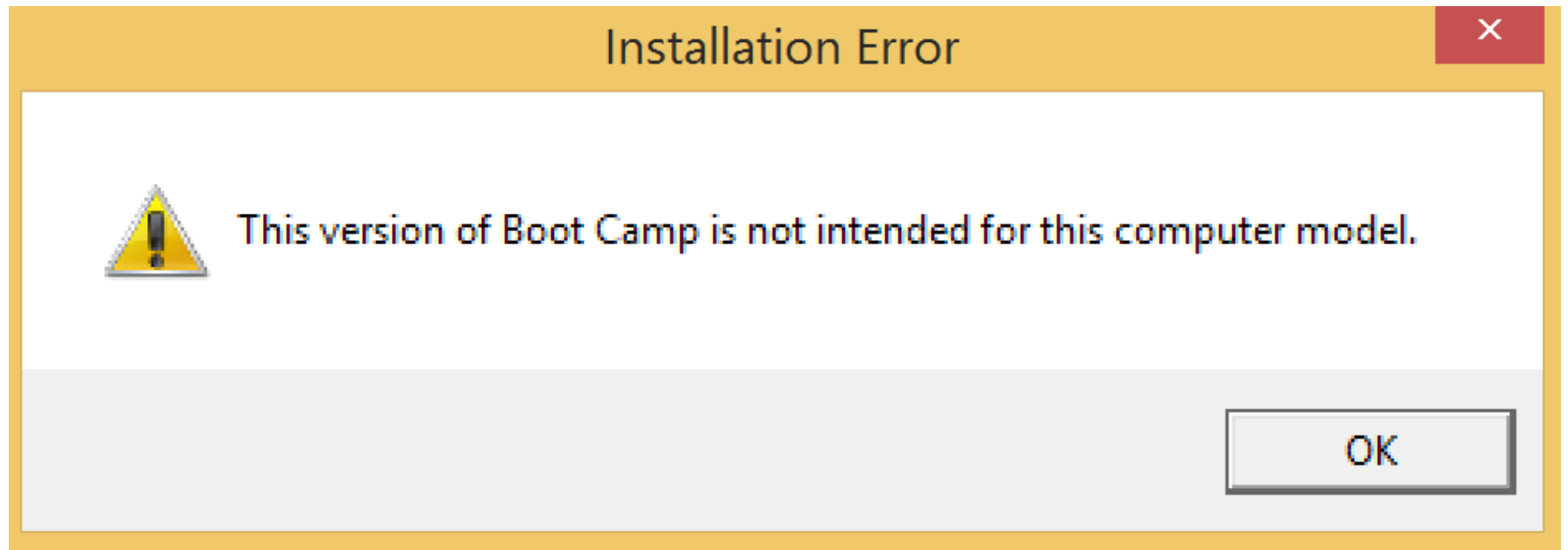
- We have discovered the the exact version of "Boot Camp Support" software is critical:

For example:

For a mid-2013 "Mac Mini" running "Windows 8.1 Enterprise Trial 64-bit", the latest version of "Boot which is 5.1.5640 failed to install while 5.1.5621 installed without a problem.

INSTALL APPLE'S "BOOT CAMP SUPPORT SOFTWARE" INTO "WINDOWS.." (continued)

- When a specific version of "Boot Camp Support Software" fails to install, you will get a cryptic error message:



INSTALL APPLE'S "BOOT CAMP SUPPORT SOFTWARE" INTO "WINDOWS.." (continued)

- If you get this error message, erase the files and folders from the USB flash drive or USB hard drive.

Then eject the USB flash drive or USB hard drive.

INSTALL APPLE'S "BOOT CAMP SUPPORT SOFTWARE" INTO "WINDOWS.." (continued)

- Then go back to <http://support.apple.com/downloads/#macoscomponents> and download and try another version of "Boot Camp Support Software". You can click on "Load more results" at the bottom of the Web pages to get older versions of "Boot Camp Support Software".

INSTALL APPLE'S "BOOT CAMP SUPPORT SOFTWARE" INTO "WINDOWS.." (continued)

- Even if you are unable to install any version of "Boot Camp Support Software", the native (non-Apple) drivers in "Windows 8.1" and "Windows 8" work fairly well inside a "Boot Camp" partition.

INSTALL APPLE'S "BOOT CAMP SUPPORT SOFTWARE" INTO "WINDOWS.." (continued)

- In contrast, the native (non-Apple) drivers in "Windows 7" work horribly in a "Boot Camp" partition:

Without a 4.x edition of "Boot Camp Support Software" installed, "Windows 7 Enterprise Trial" failed to recognize the wireless, wired, and Bluetooth adapters inside our "Mac Mini". The graphics rendering was also miserable

INSTALL APPLE'S "BOOT CAMP SUPPORT SOFTWARE" INTO "WINDOWS.." (continued)

- The latest version of the default white Mac "Magic mouse" now has a left and right mouse button on it. The buttons are not visible because they are activated by rocking the entire mouse to the left for the left mouse button and rocking the entire mouse to the right for the right mouse button.

INSTALL APPLE'S "BOOT CAMP SUPPORT SOFTWARE" INTO "WINDOWS.." (continued)

- When you are running "OS X", both the left and right mouse keys are set to act like a left mouse key by default. You can change this behavior in the Mouse applet in "System Preferences".

INSTALL APPLE'S "BOOT CAMP SUPPORT SOFTWARE" INTO "WINDOWS.." (continued)

- However, when you are running "Windows.." inside the Boot Camp partition, the left and right mouse buttons of the white "Magic Mouse" work as they are supposed to in "Windows": The right mouse button usually brings up a pop-up context menu, when it is clicked.

**RUNNING
"WINDOWS..
INSIDE A "BOOT
CAMP"
PARTITION**

RUNNING "WINDOWS.." INSIDE A BOOT CAMP PARTITION

- If you have successfully installed Apple's "Boot Camp Support Software" into "Windows..", "Windows.." will run well inside your Mac with great screen resolution and hardware driver support.

RUNNING "WINDOWS.." INSIDE A BOOT

CAMP PARTITION (continued)

- If you are unable to install Apple's "Boot Camp Support Software", into "Windows..", "Windows.." will run terribly with horrible screen resolution and horrible hardware driver support: If this is the case, you will probably prefer to run "Windows.." inside a virtual machine program such as "Oracle VM VirtualBox" (free), "Parallels Desktop" (not free), or "VMware Fusion (not free)

RUNNING "WINDOWS.." INSIDE A BOOT CAMP PARTITION (continued)

- The "Boot Camp" feature of Macs works much better with "Windows 8.1" and "Windows 8" relative to "Windows 7". If you are unable to install "Boot Camp Support Software" into "Windows 7" running inside a Boot Camp partition, you will have to run "Windows 7" as a virtual machine inside a virtual machine program instead.

RUNNING "WINDOWS.." INSIDE A BOOT CAMP PARTITION (continued)

- You cannot set your Mac to boot up into "Windows.." from inside "OS X".
- There are two ways to get your Mac to boot up into the "Windows.." Boot Camp partition:

RUNNING "WINDOWS.." INSIDE A BOOT

CAMP PARTITION (continued)

- There are two ways to get your Mac to boot up into the "Windows.." Boot Camp partition:
Hold down the "Alt"/"Option" key during boot up
OR
get into "Boot Camp" in the "Control Panel" when you are running "Windows.."

RUNNING "WINDOWS.." INSIDE A BOOT CAMP PARTITION (continued)

- The default white Mac "chiclet keys" keyboard" will be missing several important "Windows.." keys when you are running "Windows.." in the Boot Camp partition of your Mac. To remedy this, you can install a standard USB "Windows" keyboard for your Mac.

**RUNNING
"WINDOWS 7
ENTERPRISE
TRIAL"**

RUNNING "WINDOWS 7 ENTERPRISE TRIAL"

- See http://aztcs.org/meeting_notes/winhardsig/win7eval/win7eval.pdf

RUNNING "WINDOWS 7 ENTERPRISE TRIAL" (continued)

- After installing the "**Windows 7 Enterprise Trial**", you can install the "Service Pack 1" for "Windows 7.." by either installing it from within "Windows Update" in the Control Panel or you can download it as an .ISO DVD image file at

<http://www.microsoft.com/en-us/download/details.aspx?id=5842>

**RUNNING
"WINDOWS 8
ENTERPRISE
EVALUATION"**

RUNNING "WINDOWS 8 ENTERPRISE EVALUATION"

- See http://aztcs.org/meeting_notes/winhardsig/win8/win8enteval.pdf

**RUNNING
"WINDOWS 8.1
ENTERPRISE
EVALUATION"**

RUNNING "WINDOWS 8.1 ENTERPRISE EVALUATION"

- The default "Magic Mouse" that is provided with your Mac will not work well with "Windows 8.1 Enterprise Evaluation": It will generate spurious keystrokes when you are dragging the mouse cursor. Attach and use a regular two-button, USB "Windows"-compatible mouse instead.

RUNNING "WINDOWS 8.1 ENTERPRISE EVALUATION"

- See http://aztcs.org/meeting_notes/winhardsig/win8.1/win8.1enteval.pdf

REFERENCES

- <http://www.macwindows.com/winintelmac.html>
- <http://www.pcmag.com/article2/0,2817,2344662,00.asp>
- <http://support.apple.com/kb/ht1461>
- <http://support.apple.com/kb/HT5634>
- <http://support.apple.com/downloads/#macoscomponents>

REFERENCES (continued)

- <http://www.zdnet.com/want-the-most-reliable-windows-pc-buy-a-mac-or-maybe-a-dell-7000014469/>