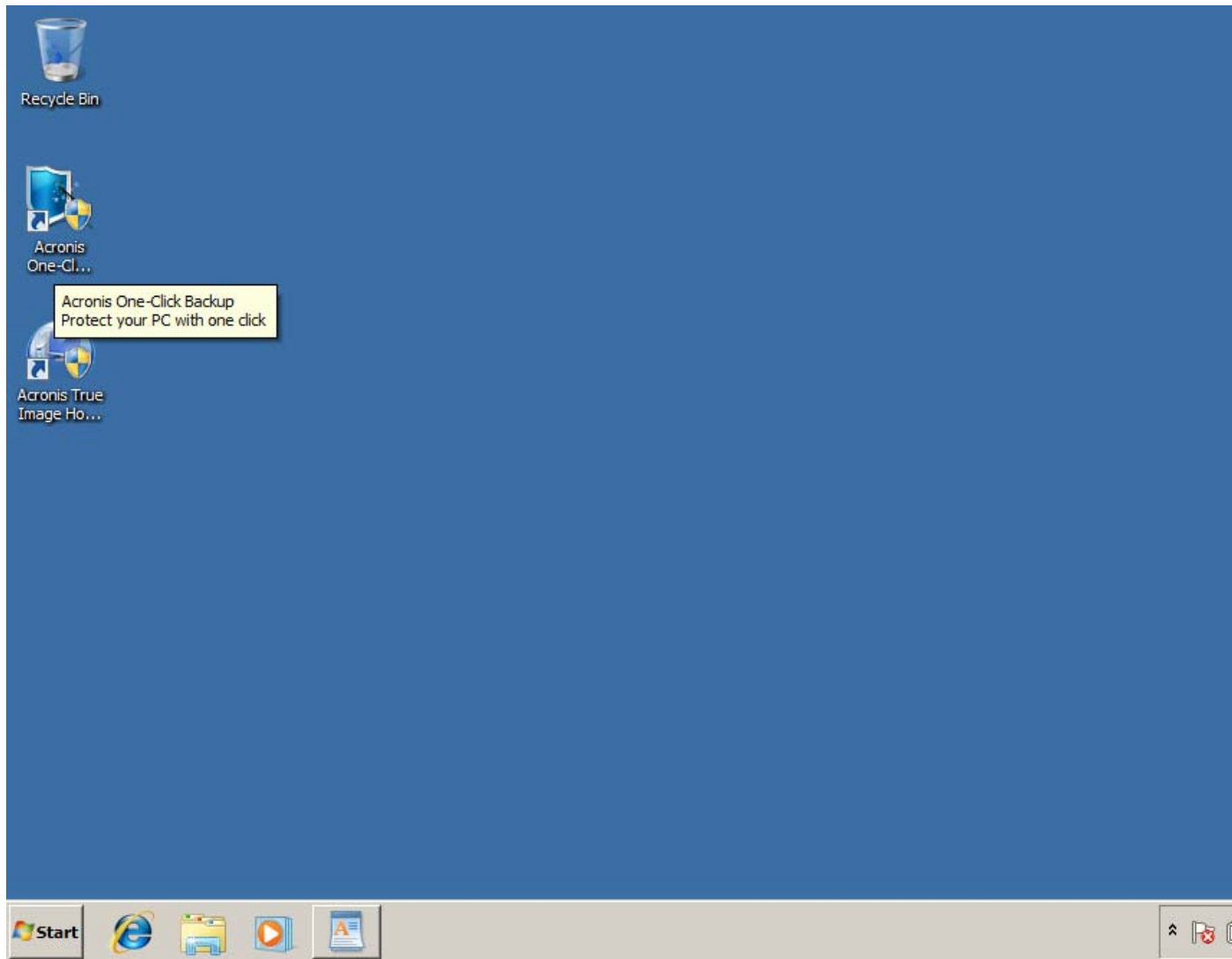


# BACKIN UP/IMAGING/ARCHIVING HARD DRIVES WITH "ACRONIS TRUE IMAGE HOME 2010"



\*



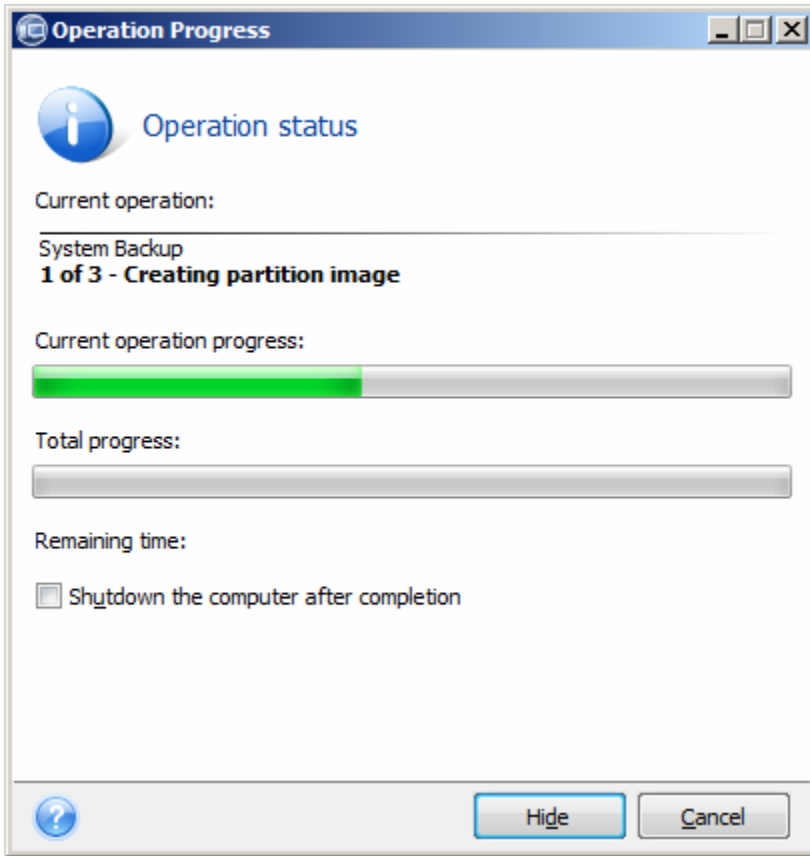
\*



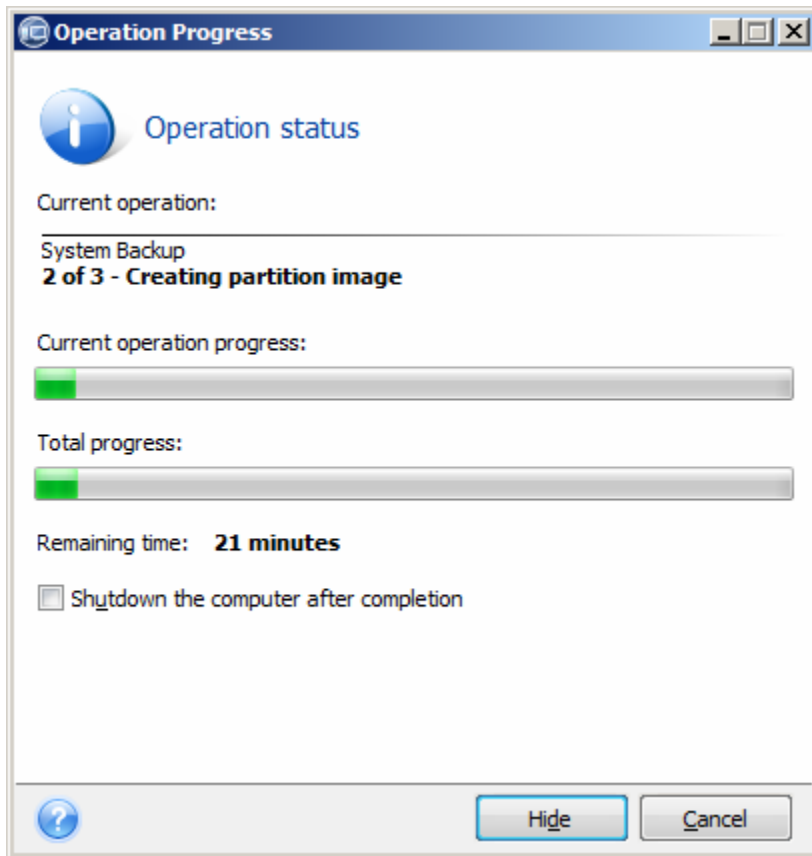
\*

Double-click on the "Acronis One-Click Backup" icon:

\*



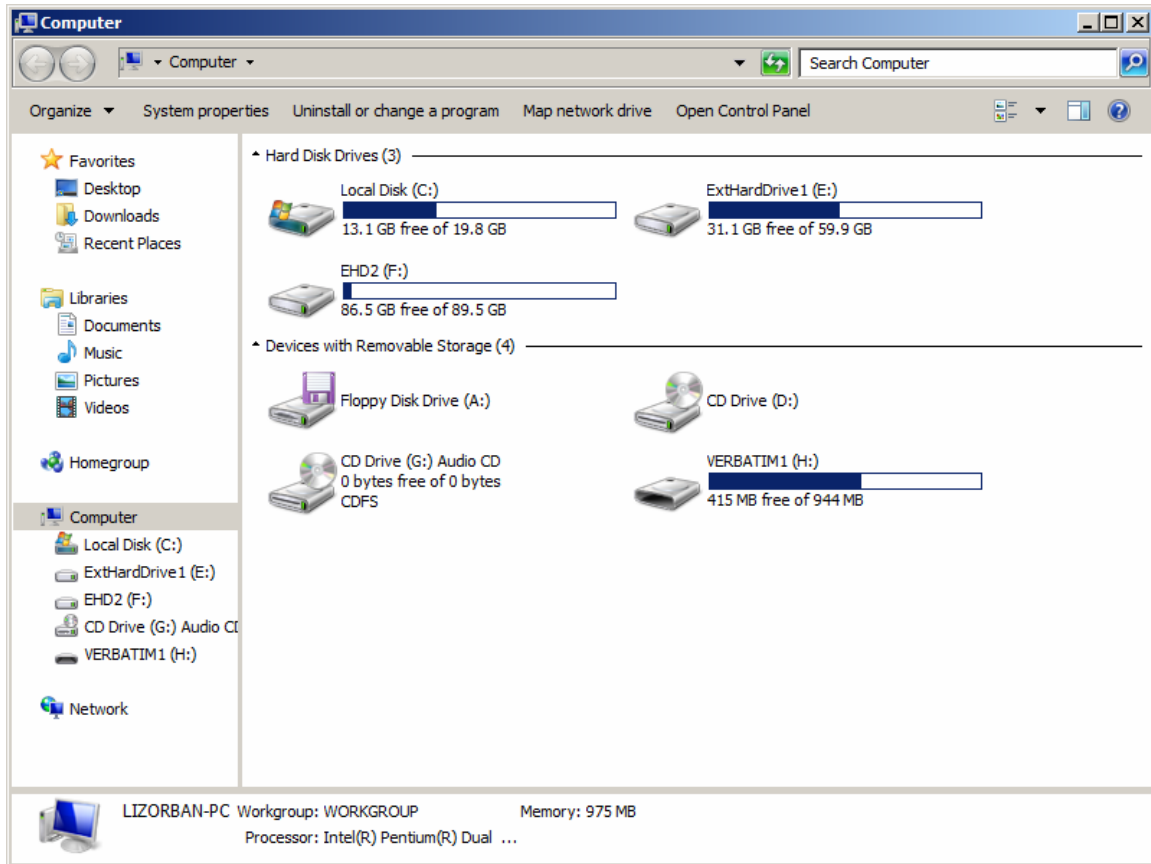
\*



\*

"Aconis One-Click Backup" only backs up the "System Reserved" partition (of a Windows 7 computer, if there is one) and the "Windows system partition" of your computer.

Locate the backup that you just made:

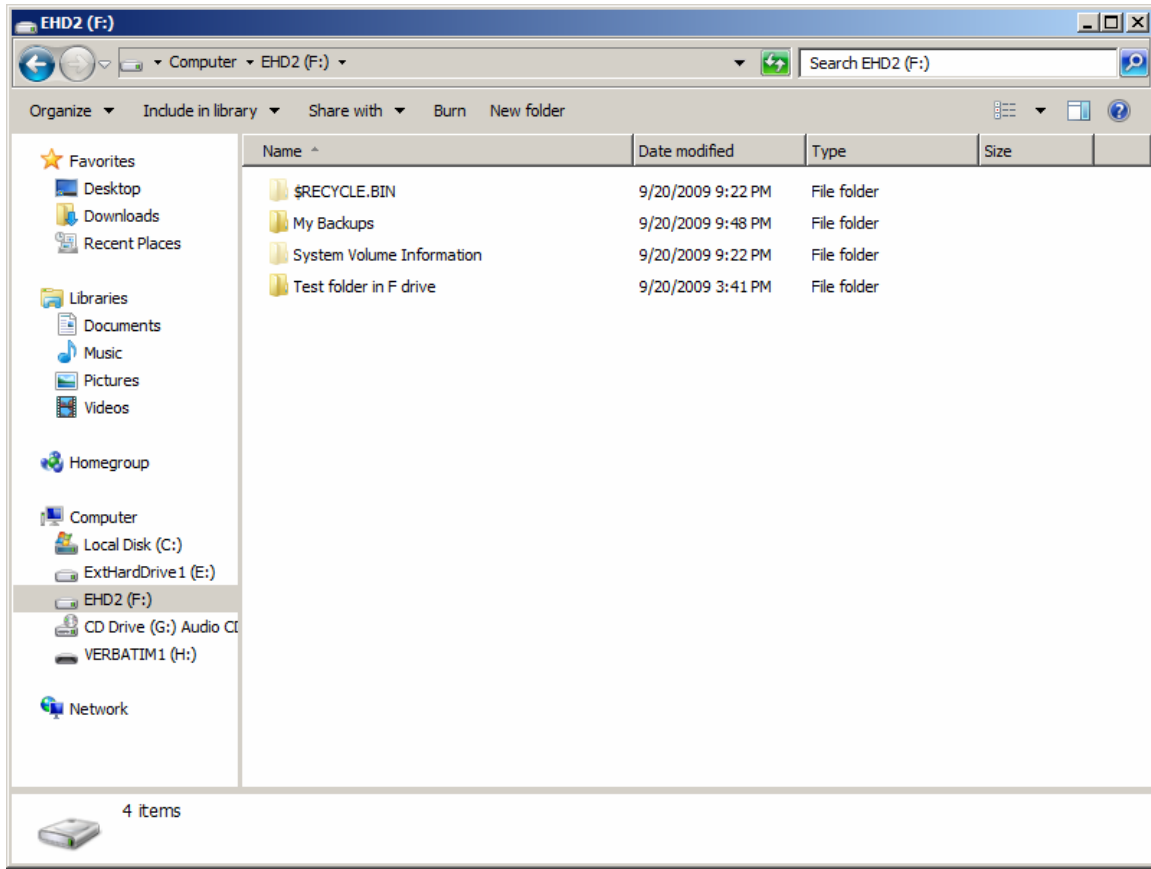


\*

If you have more than one drive, it will be located on the drive that has the most free space.

In our case, it is the F: drive:

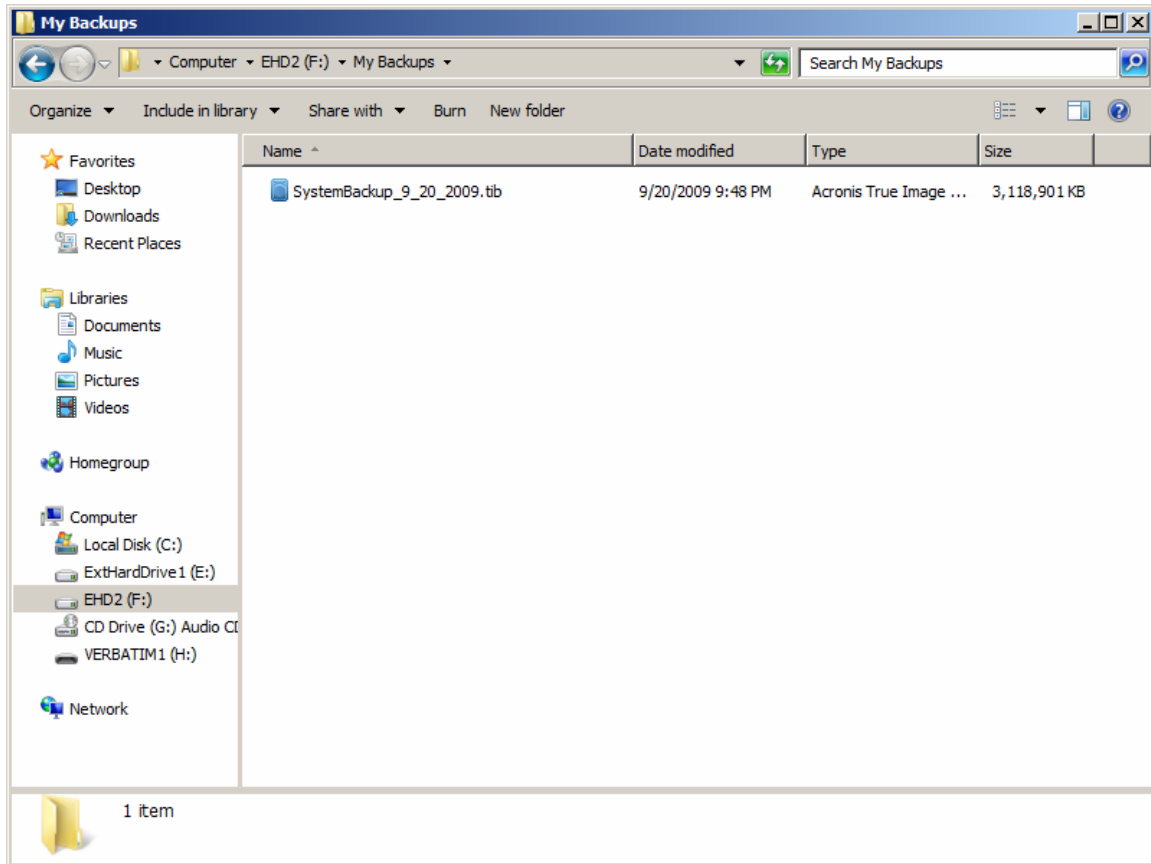
Double-click on the F: drive:



\*

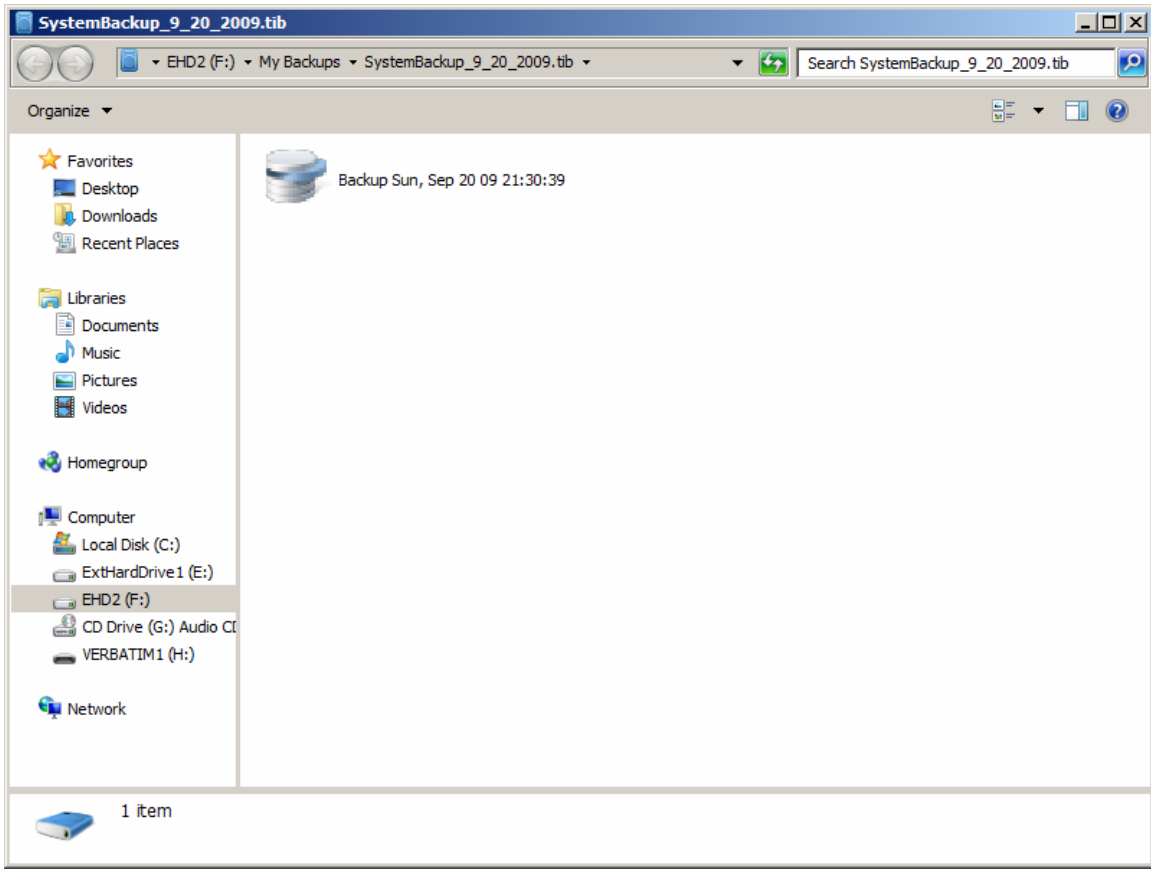
Note that Acronis has created a folder called 'My Backups'.

Double-click on it:

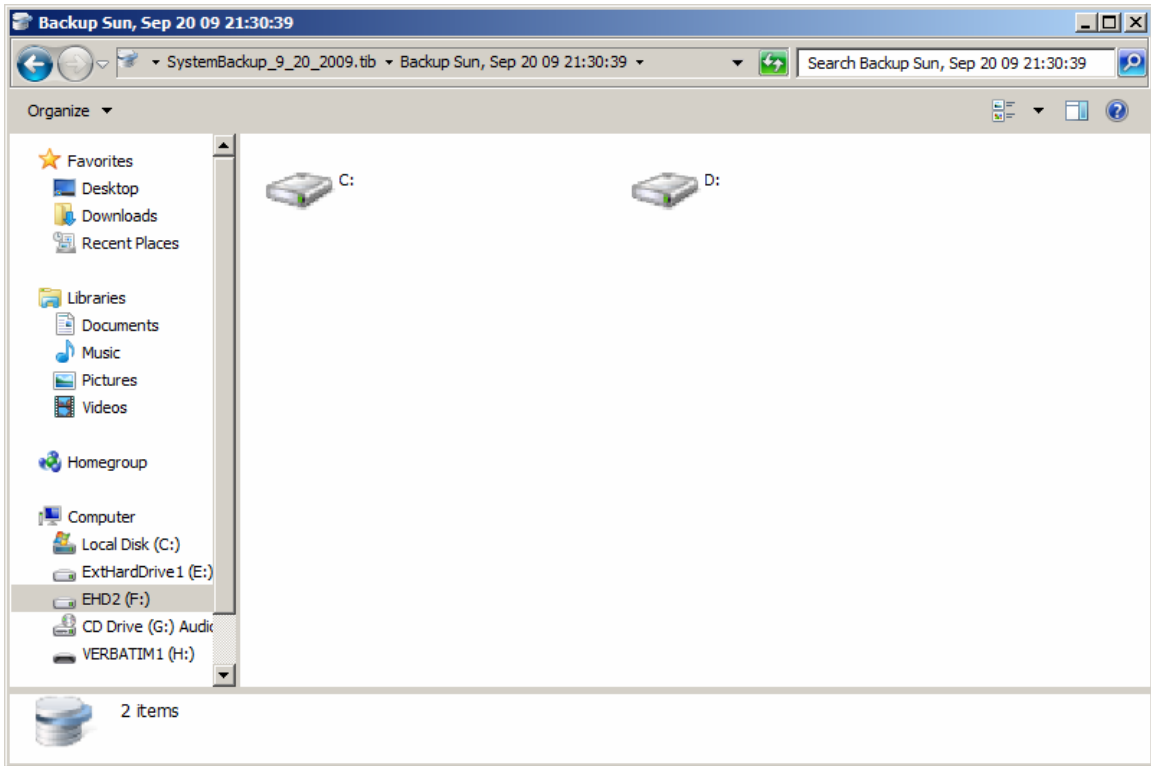


The newly-created SystemBackup\*.tib file is located in it.

Double-click on it.



Double-click on the "SystemBackup.." icon.

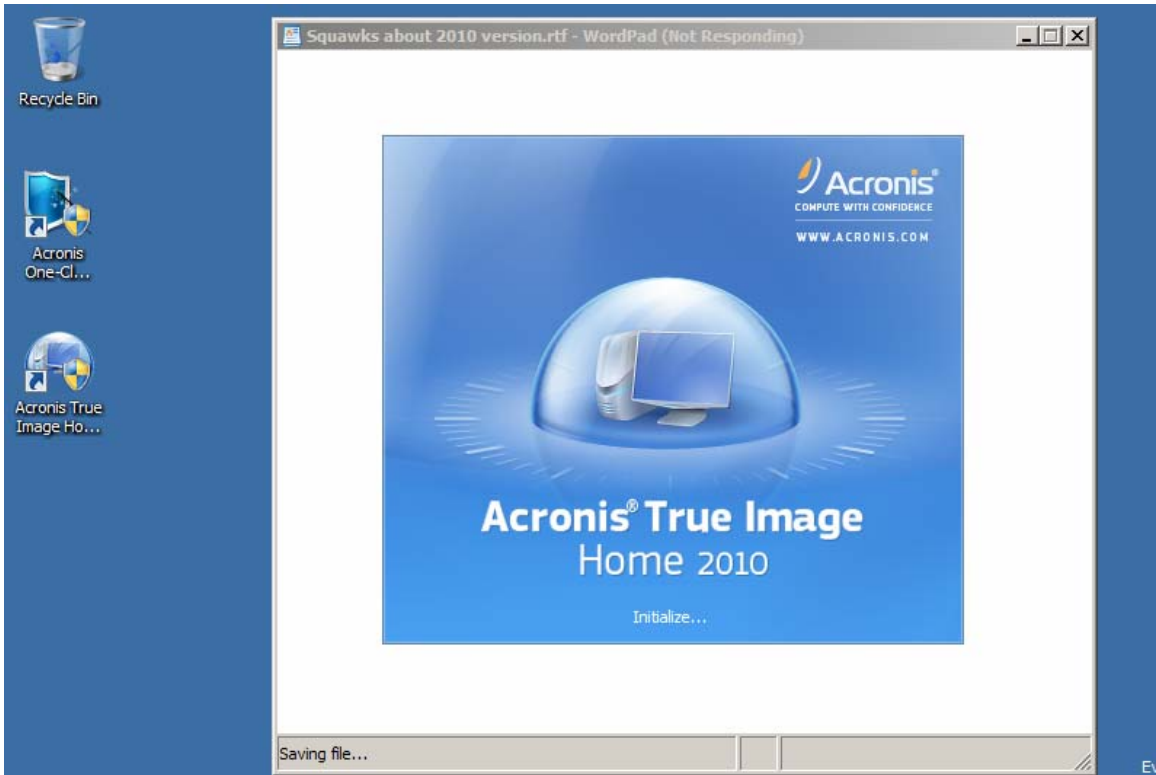


\*

Start "Acronis True Image Home 2010" by double-clicking on its desktop icon:

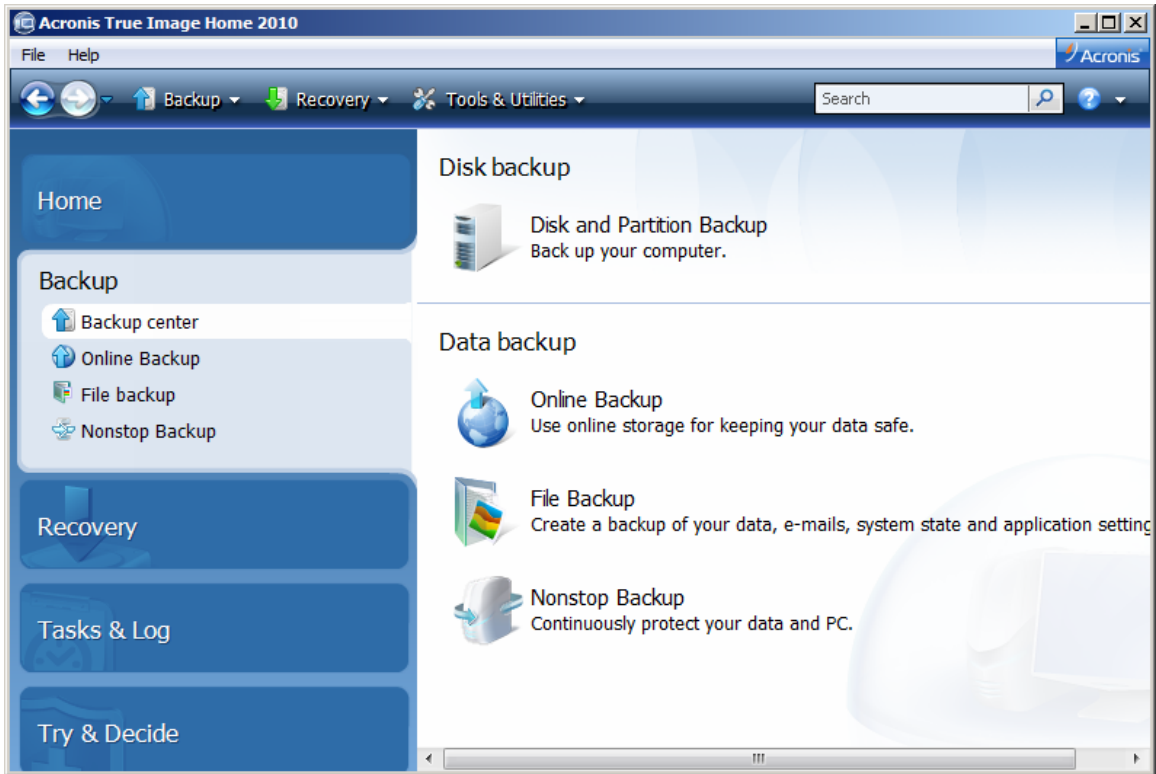


\*

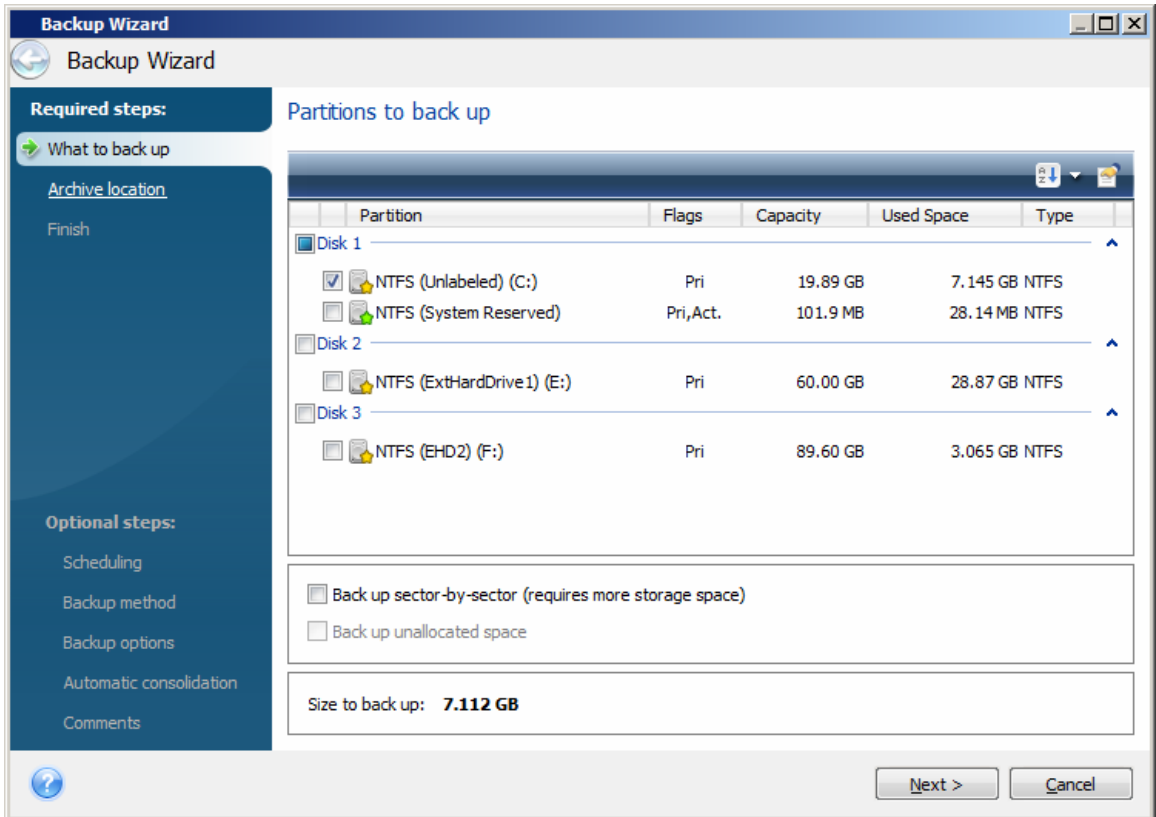


\*

Click on "Backup":

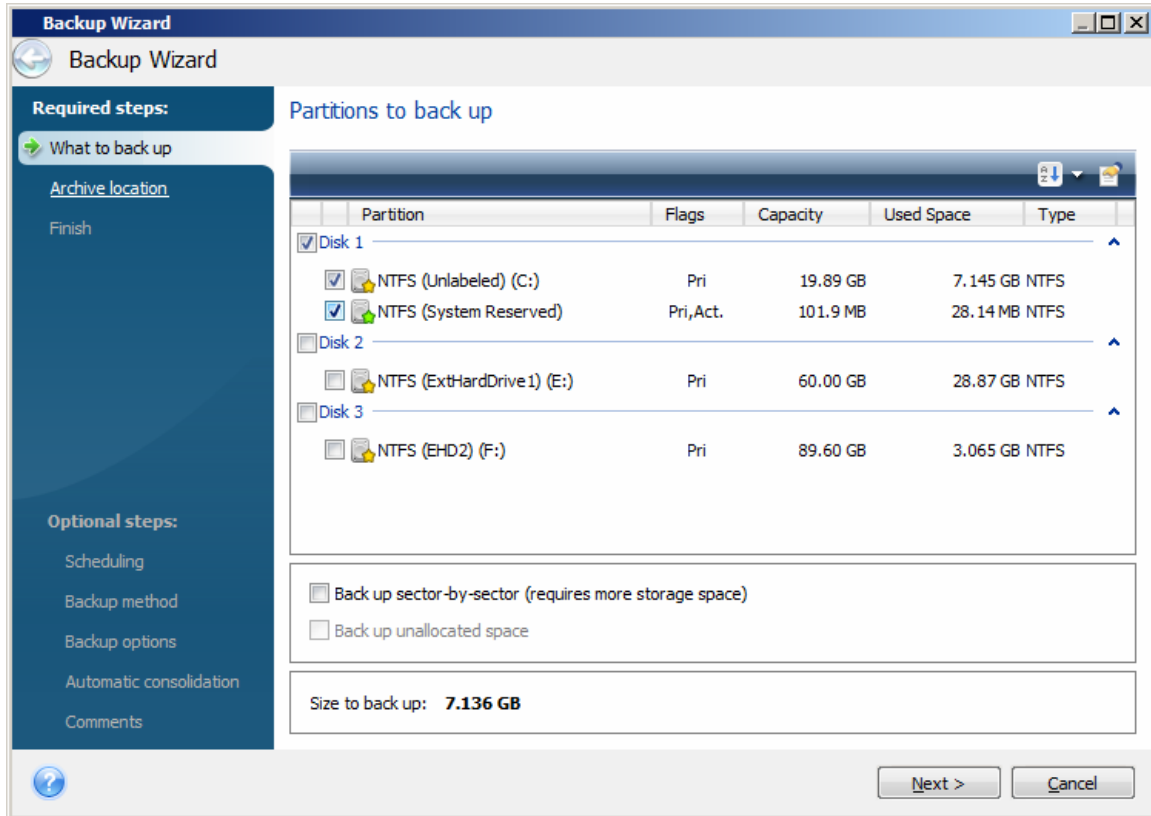


Click on "Disk and Partition Backup":



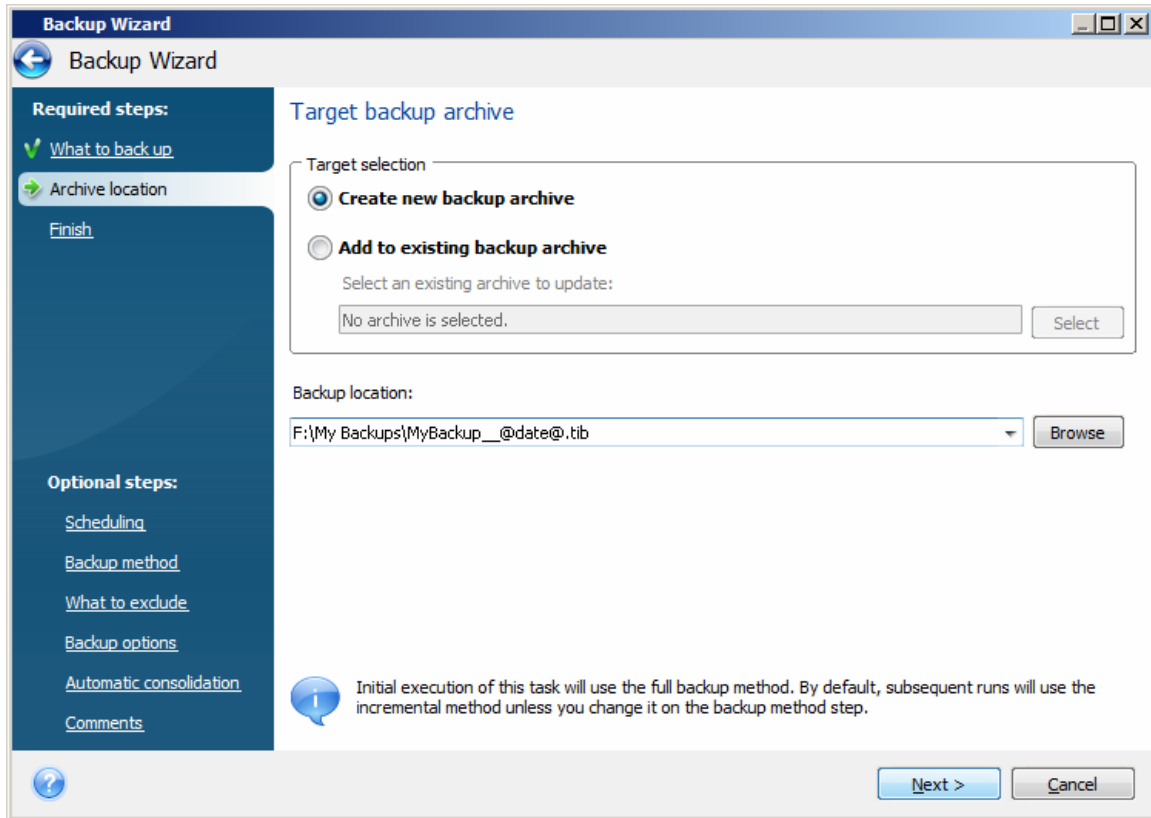
\*

Note that "Acronis..2010" does not choose to back up the "System Reserved" partition of "Windows 7" as a default. The "System Reserved" partition is a critical part of the default installation of "Windows 7". This is not a good thing. We recommend that you check off the "System Reserved" partition to get "Acronis..2010" to back it up along with the C: drive partition:



\*

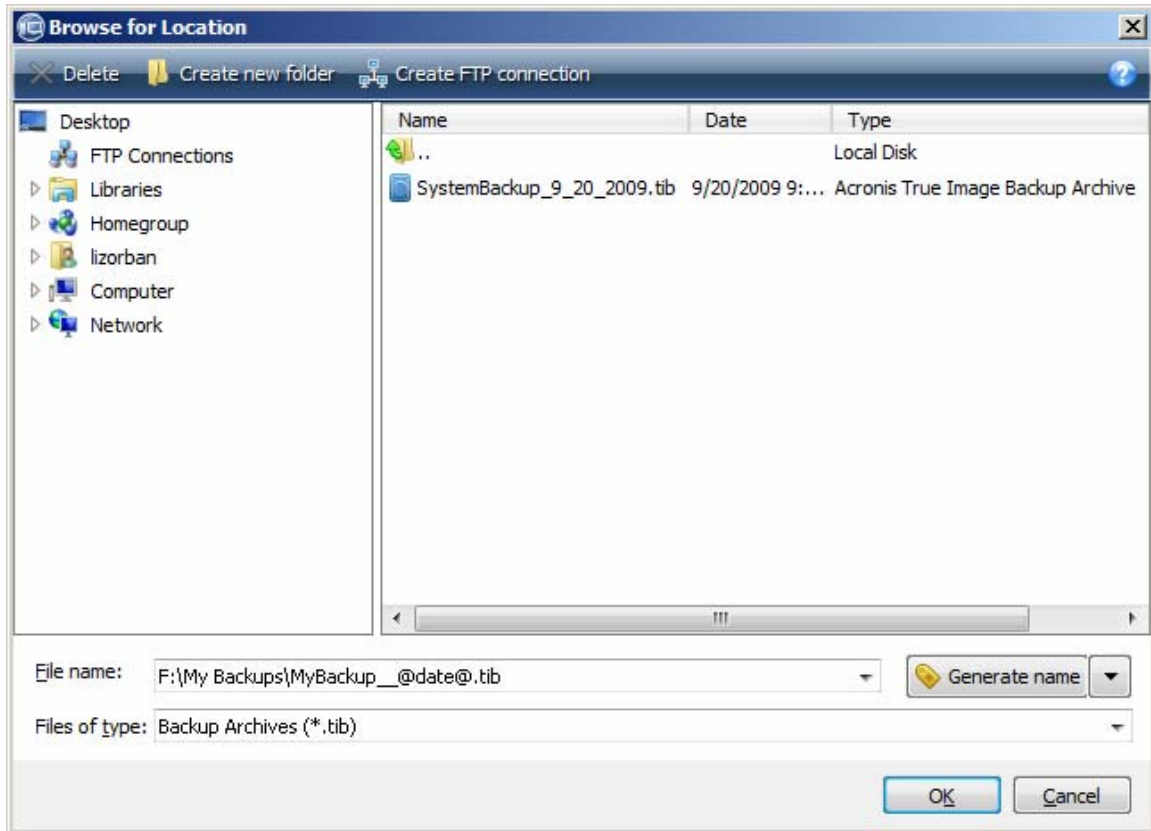
Click on the "Next" button:



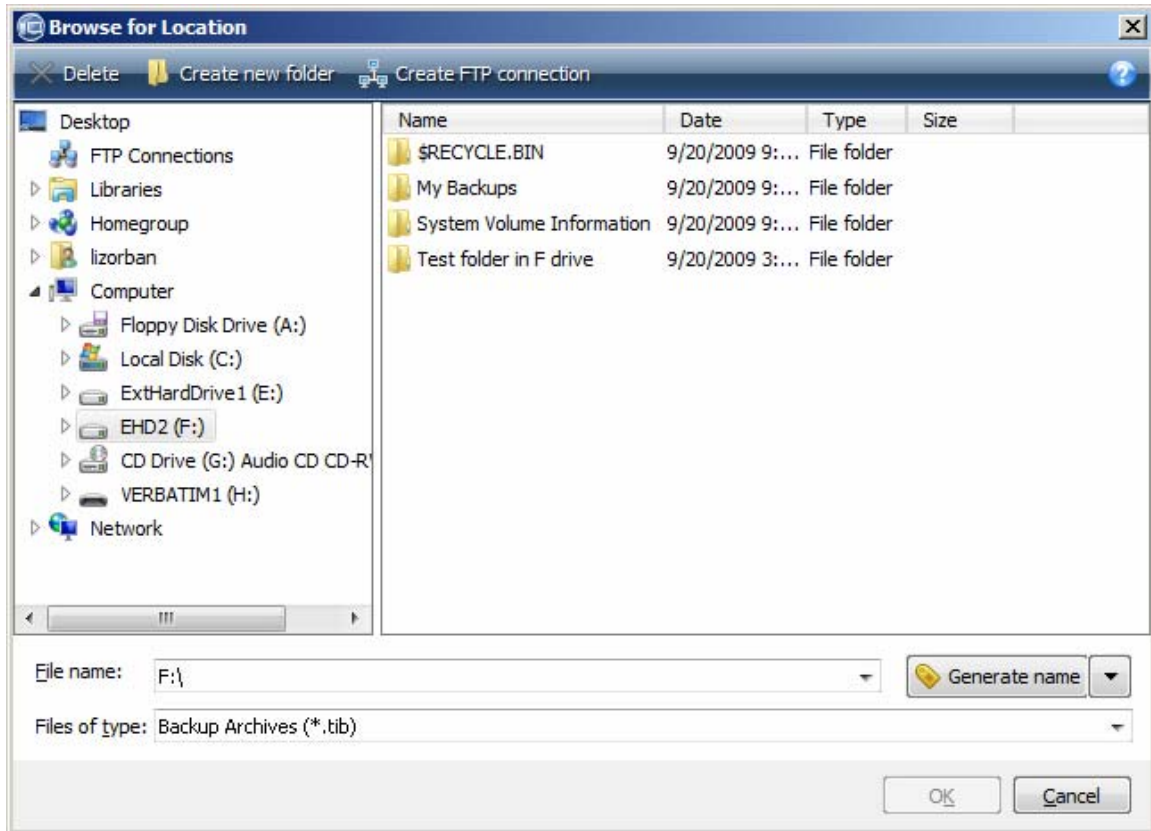
Make sure that "Create a New Backup Archive" is selected.

Click on the "Browse", if you want to select a location or a new folder for the backup image files to be placed in:

A "Browse for Location" folder will appear:



Use the "Windows Explorer" dialog box to select the hard drive and folder where you wish to place the backup image files in.



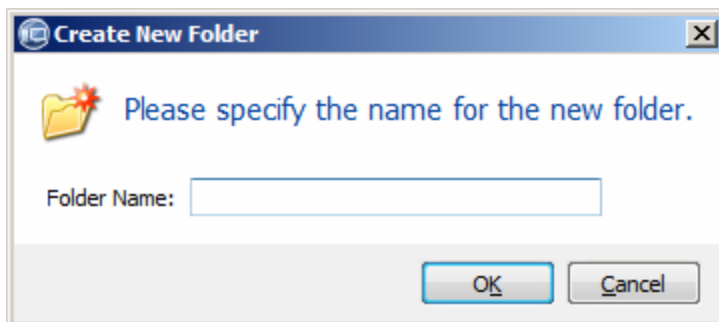
We recommend that you store each backup in it's own new folder with the folder named to indicate pertinent information such as:

1) The date of the backup

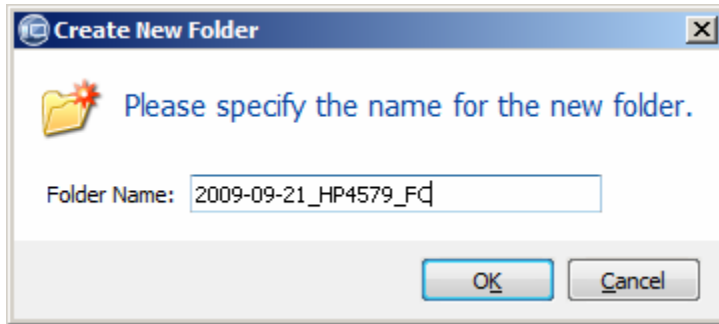
and

2) the computer that was backed up.

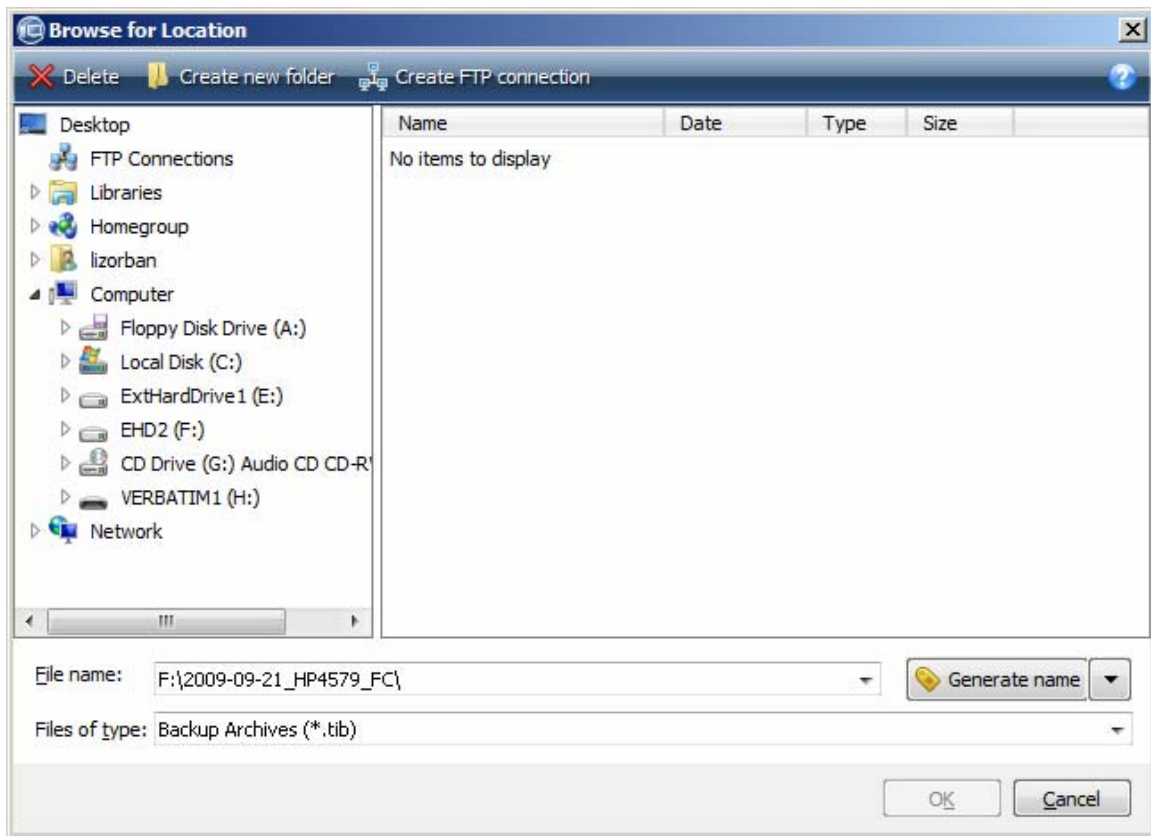
Use the "Create new folder" button to create a new folder:



Type in a name for the new folder:

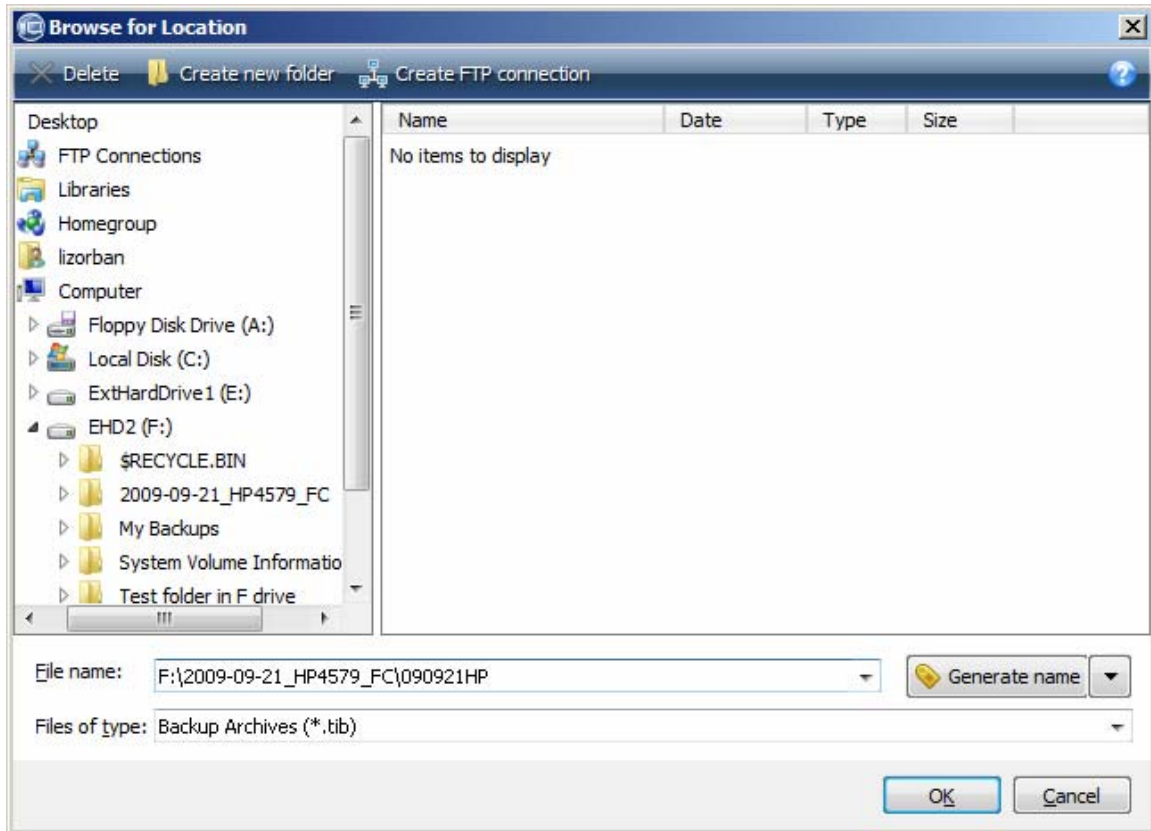


Click on the "OK" button to create the new folder:



\*

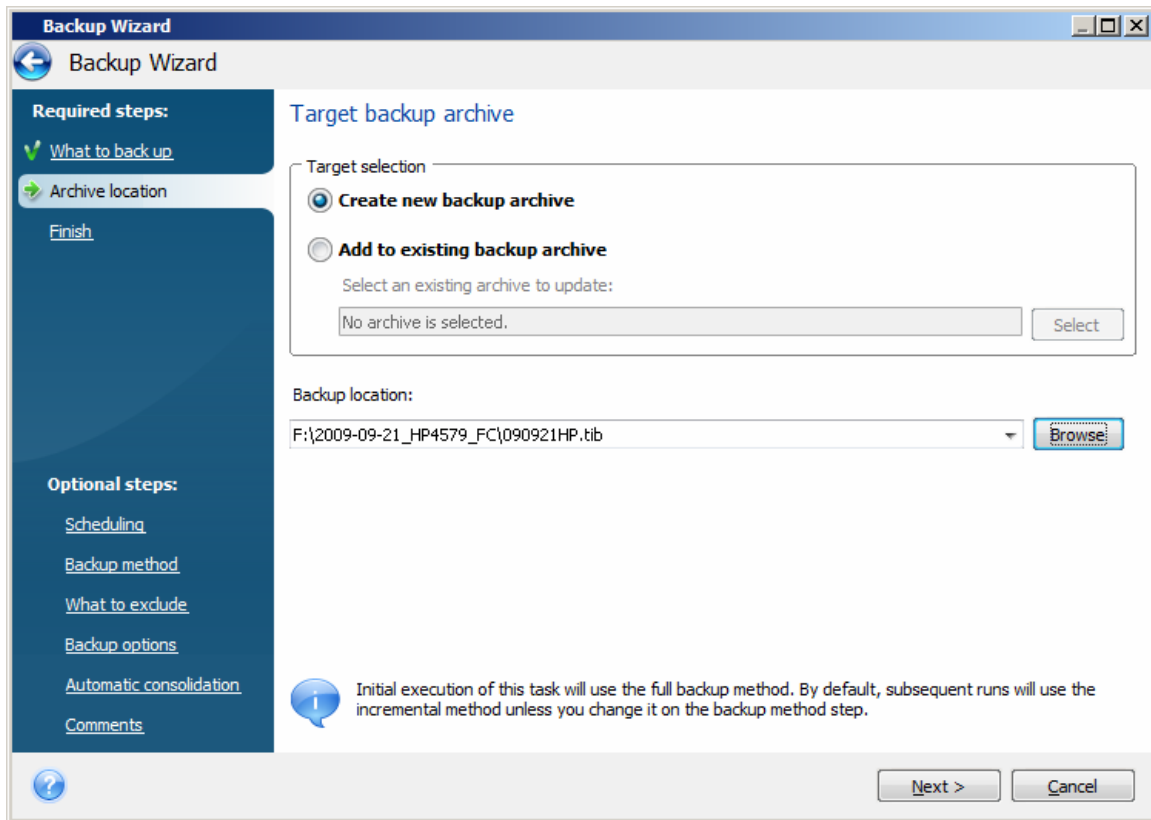
Type in a "File name" to the right of the path in the "File name" box:



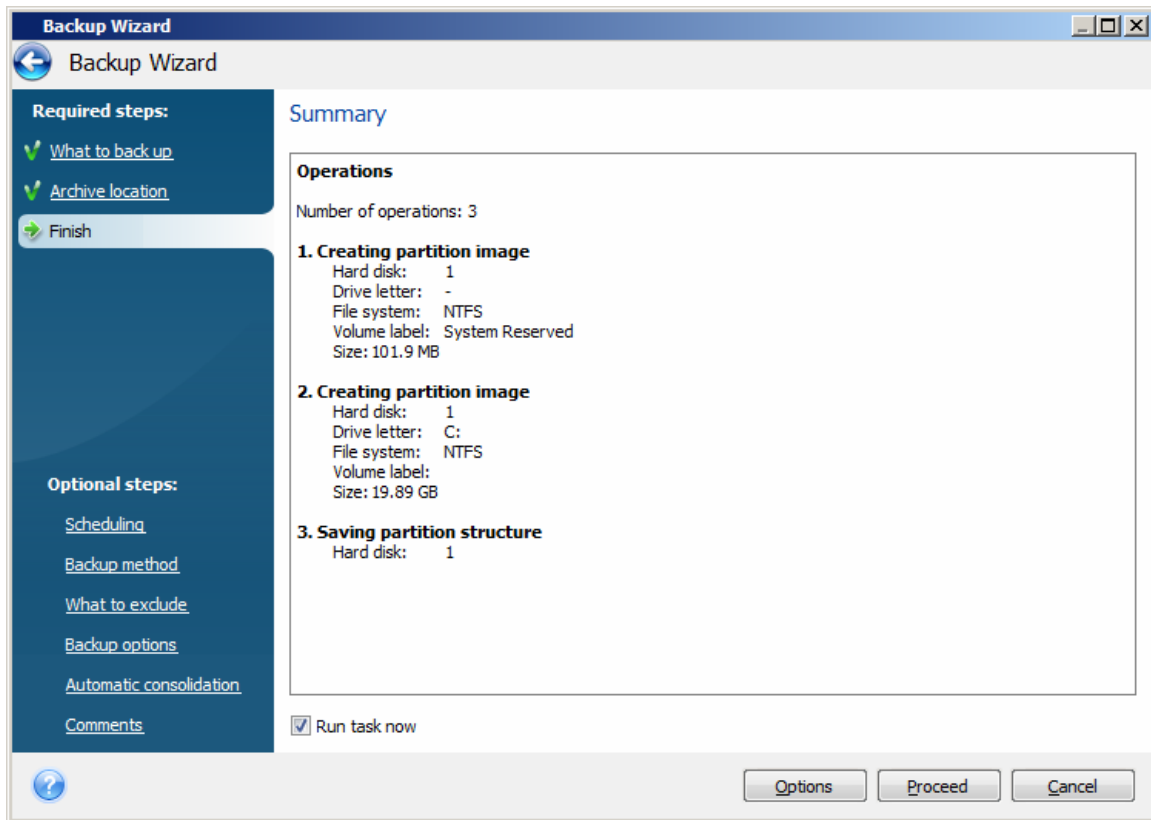
It is best not to make the "file name" the same name as the new folder that you just created.

Click on the "OK" button:

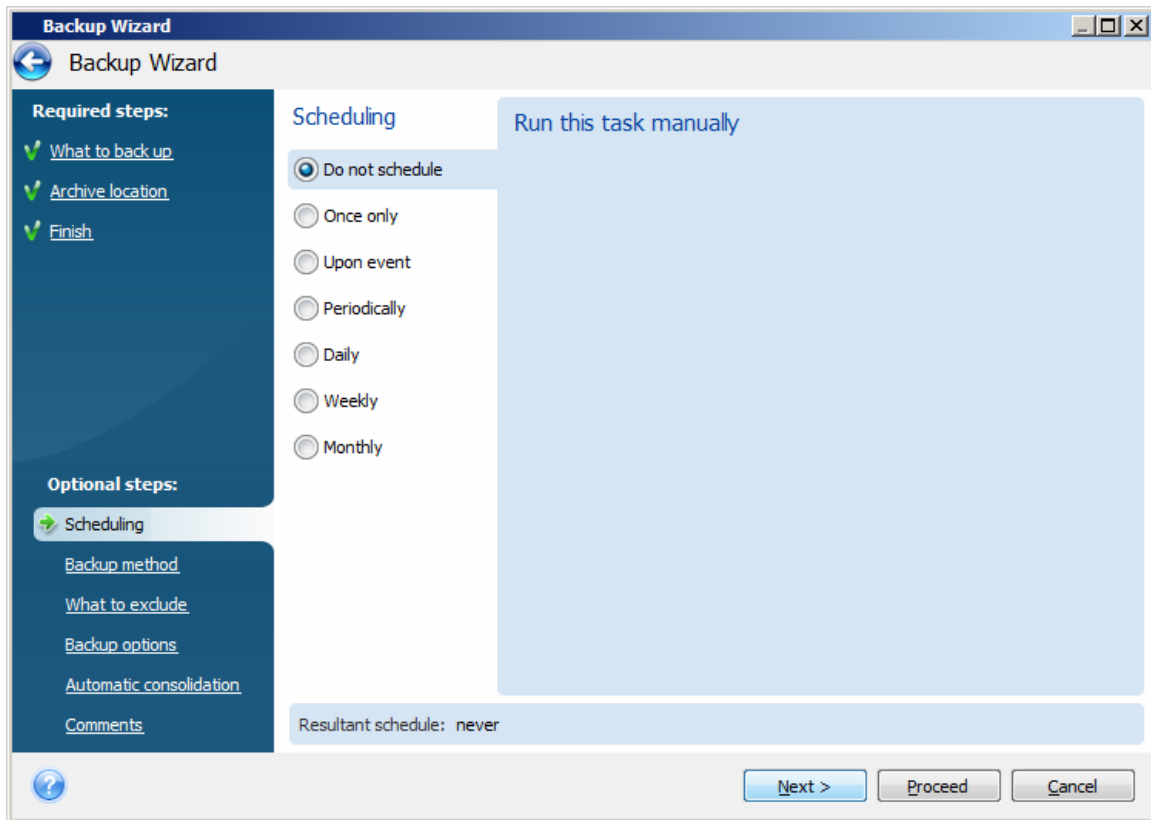
The "Browse for Location" folder will disappear:



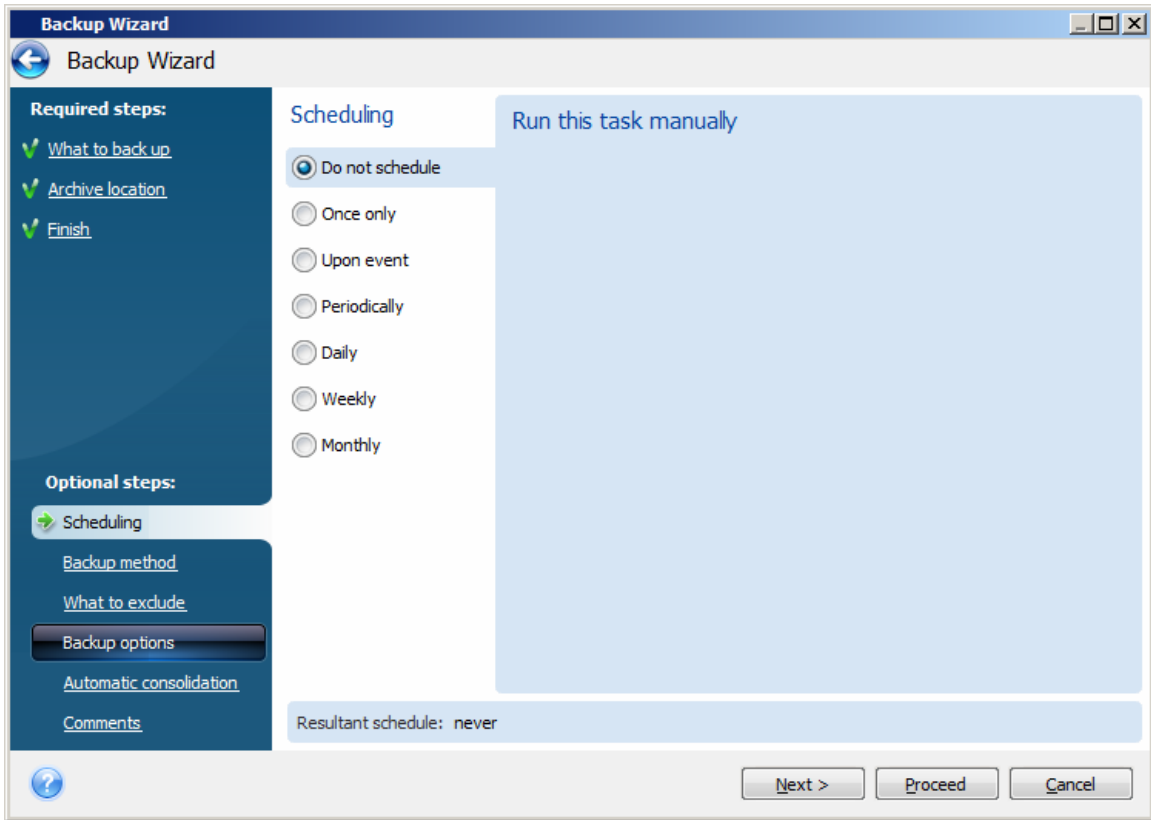
Click on the "Next" button:



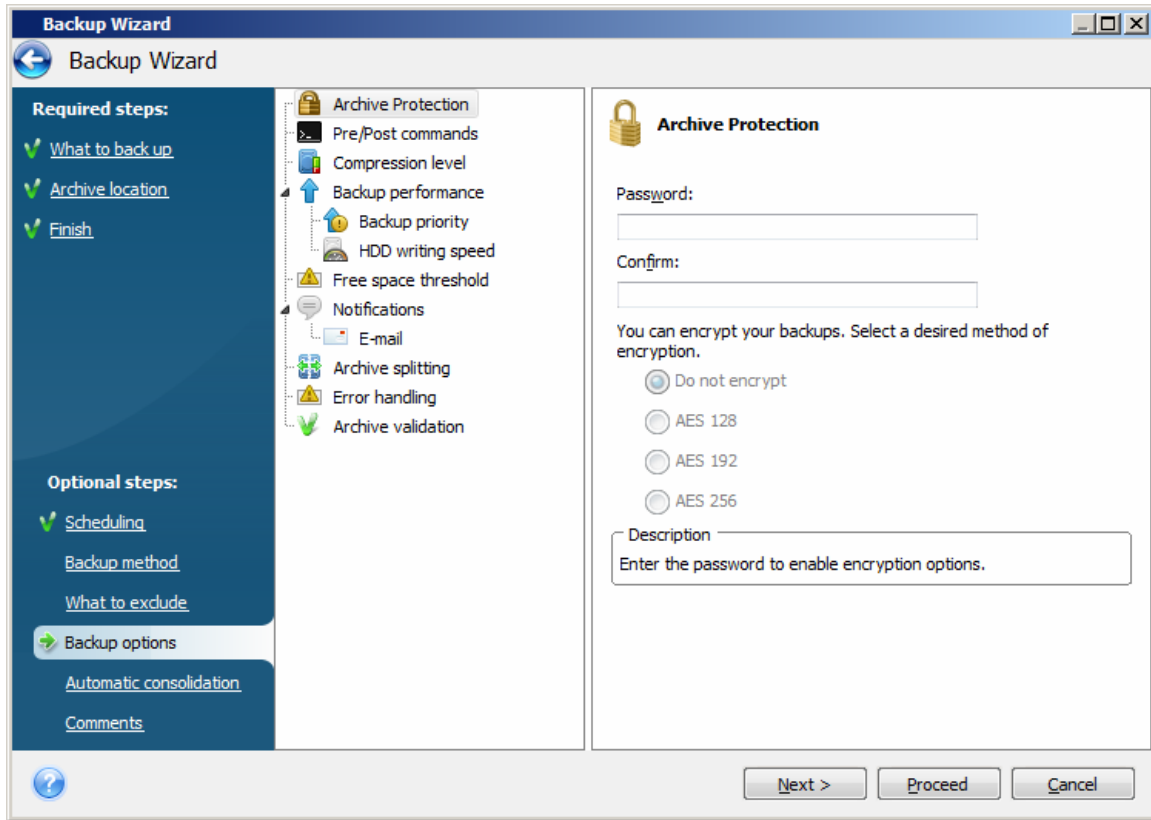
Click on the "Options" button:



Click on "Backup Options":

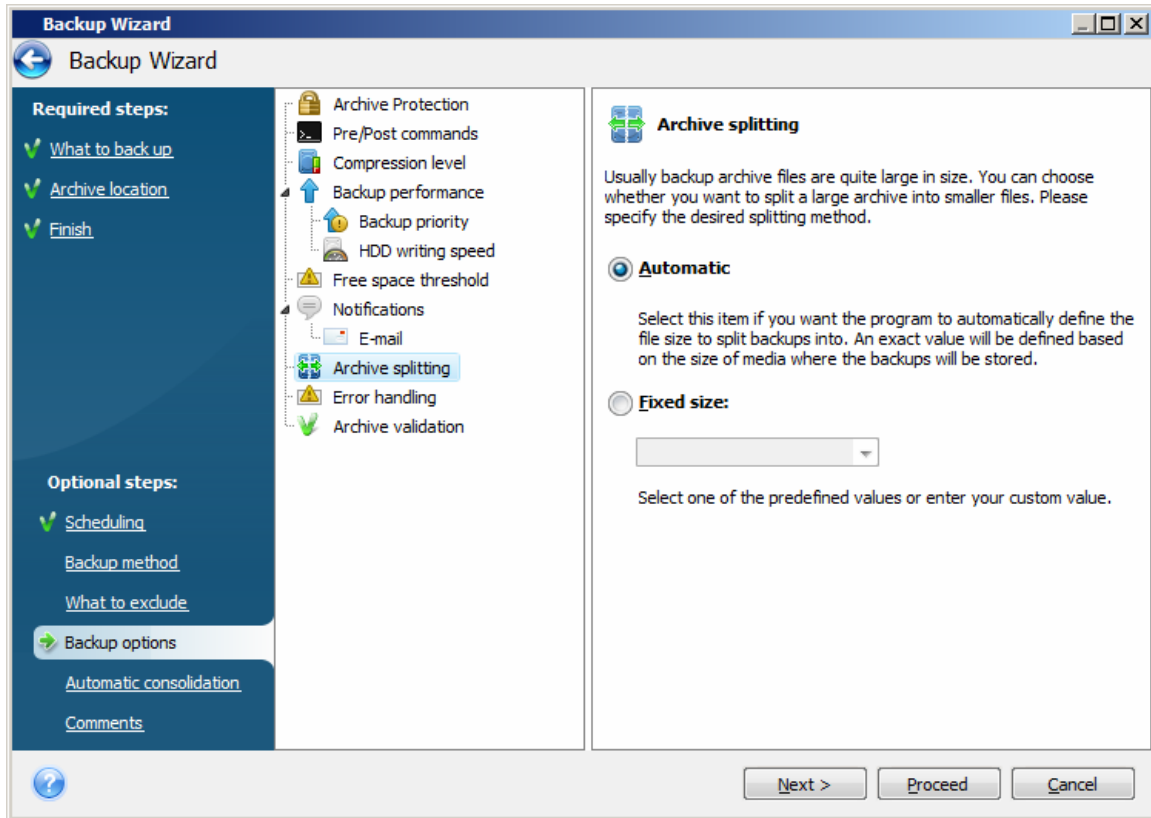


\*



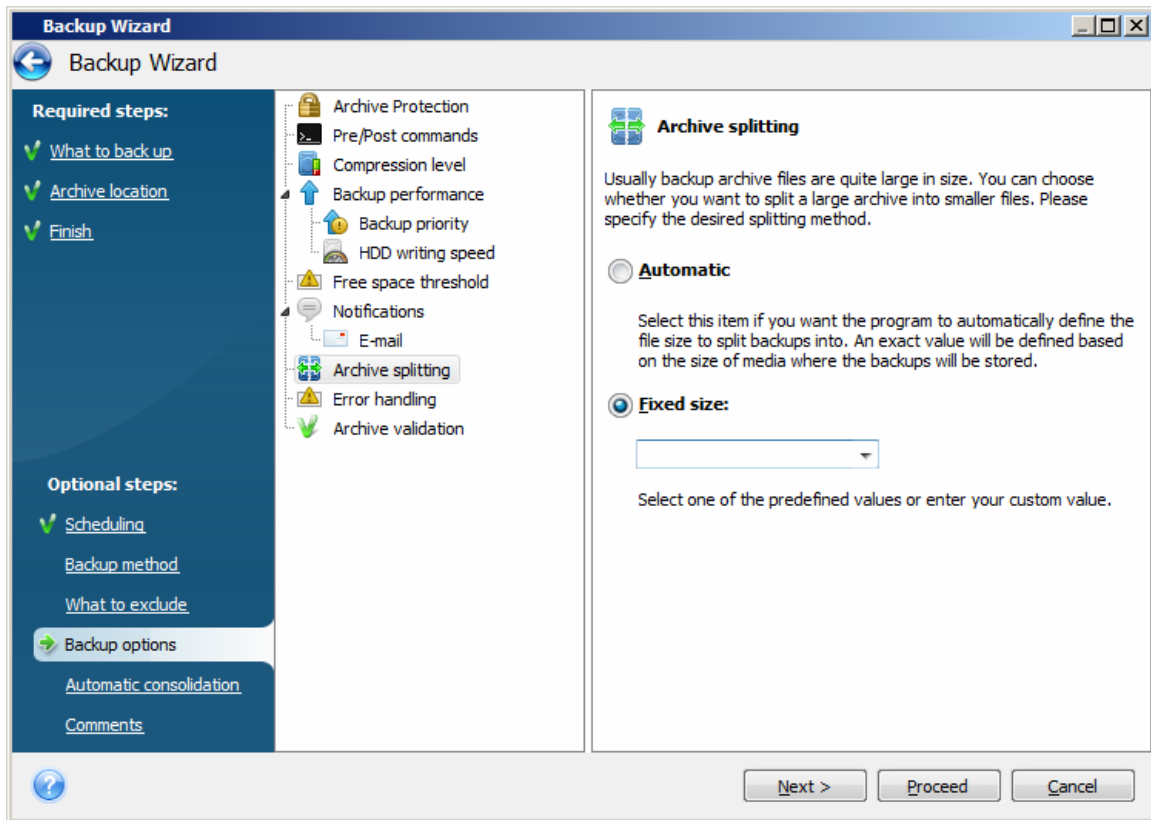
\*

Click on "Archive splitting":

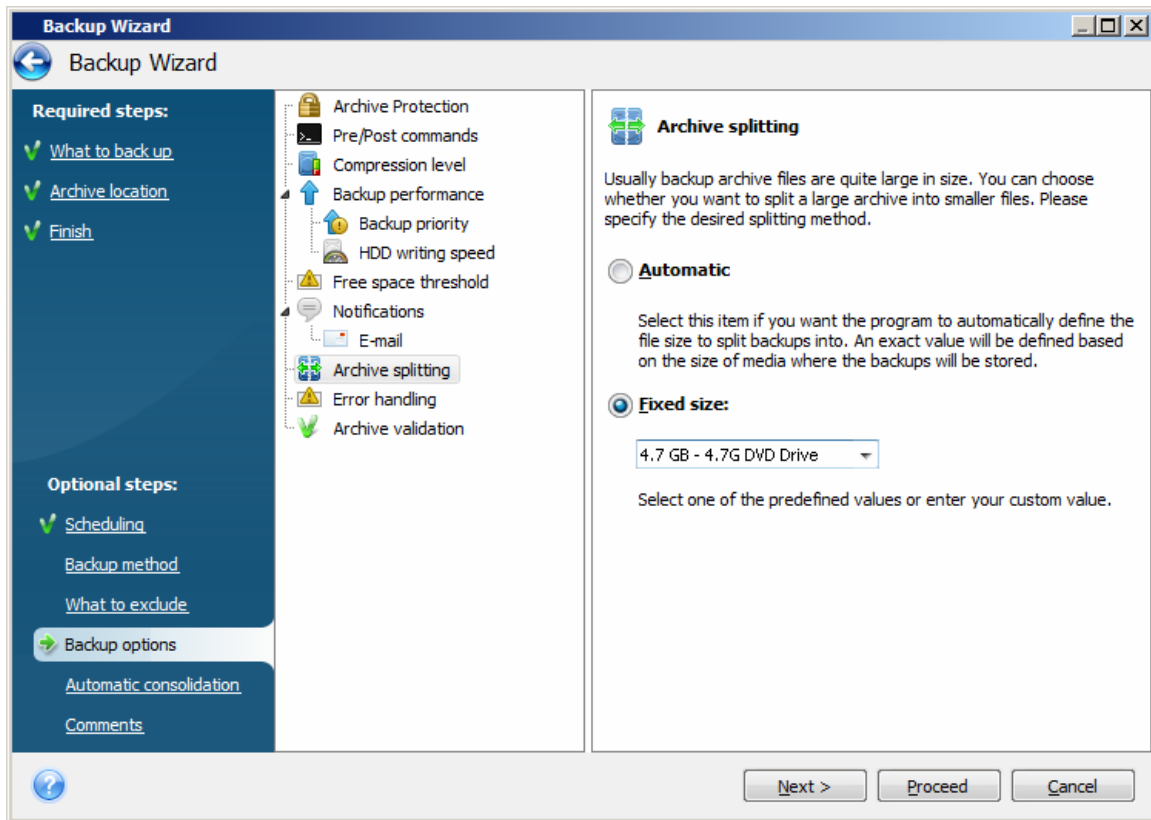


\*

Select the "Fixed size" option:

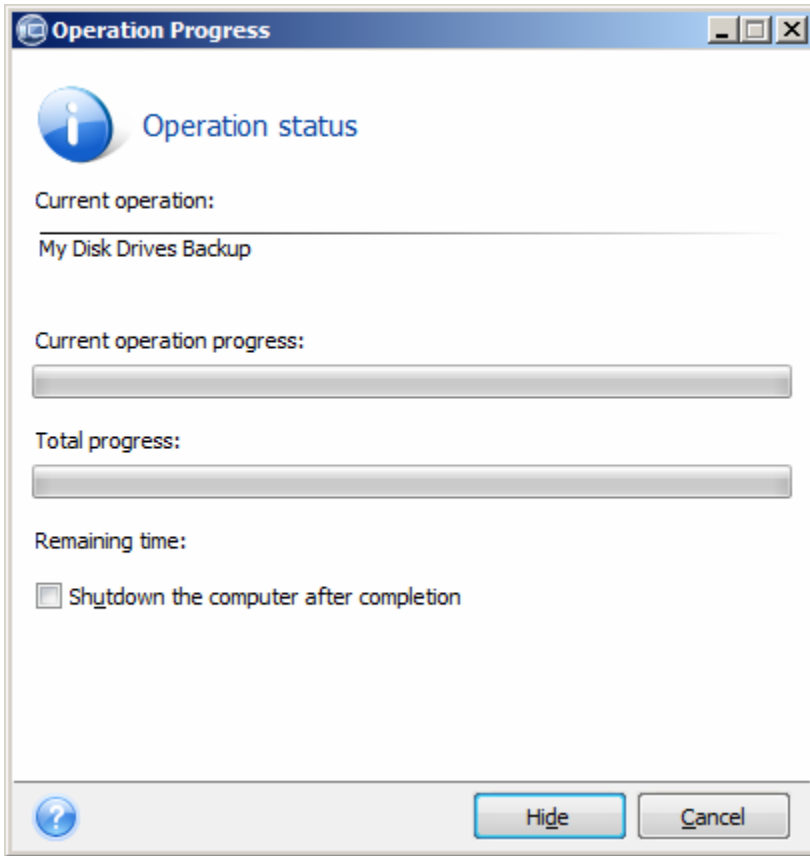


Use the "drop-down list box" to select a "Fixed size" of 4.7 Gigabytes:

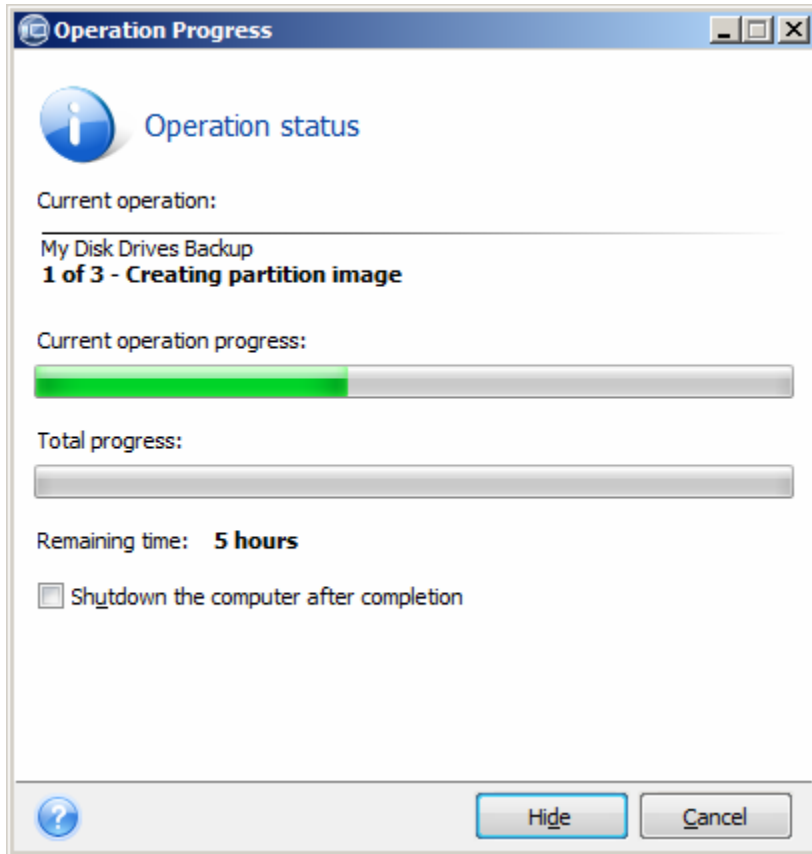


\*

Click on the "Proceed" button:



\*



A dialog box will notify you when the backup process is complete.

After creating a set of image/archive/backup files, you should test them as follows:

1) double-click on them to "explore" them to see what is inside them  
and

2) go through the motions of starting a "restore" with them (without clicking the "Proceed" button) in order to see if they have the correct contents.

Then click on the "Next" button.

