

FILE SHARING IDIOSYNCRACIES IN "WINDOWS 7", "WINDOWS 8", AND "WINDOWS 8.1"

by Francis Chao
fchao2@yahoo.com



Web Location for Presentations:

<http://aztcs.org>

Click on “Meeting Notes”

SUMMARY

- If you use the same username and password for "Windows 7" and "Windows 8" automatically attempts to share the entire "Users" folder and all user account sub-folders with all Windows, Mac, and Linux computers that are on the same local network. Here some possible workarounds for this idiosyncrasy of "Windows 7" and "Windows 8".

Unexpected File Sharing From a "Windows 8" Computer

- When "File and Printer Sharing" is turned on inside a "Windows 8" computer, even if you do not designate any folders as "shared", the "Public" profile subdirectory and the first user profile that you create (in the "Users" folder) is automatically shared with "Windows..", "Mac OS X 10.n", and Linux computers on your local network:

Administrator: Command Prompt

Windows IP Configuration

Ethernet adapter Ethernet:

```
Connection-specific DNS Suffix . : localdomain
Link-local IPv6 Address . . . . . : fe80::60c8:7994:b942:643a%12
IPv4 Address. . . . . : 192.168.61.181
Subnet Mask . . . . . : 255.255.255.0
Default Gateway . . . . . : 192.168.61.2
```

Tunnel adapter isatap.localdomain:

```
Media State . . . . . : Media disconnected
Connection-specific DNS Suffix . : localdomain
```

Tunnel adapter Teredo Tunneling Pseudo-Interface:

```
Connection-specific DNS Suffix . :
IPv6 Address. . . . . : 2001:0:5ef5:79fb:3803:11d8:3f57:c24a
Link-local IPv6 Address . . . . . : fe80::3803:11d8:3f57:c24a%14
Default Gateway . . . . . : ::
```

C:\Windows\system32>





Finder

File

Edit

View

Go

Window

Help

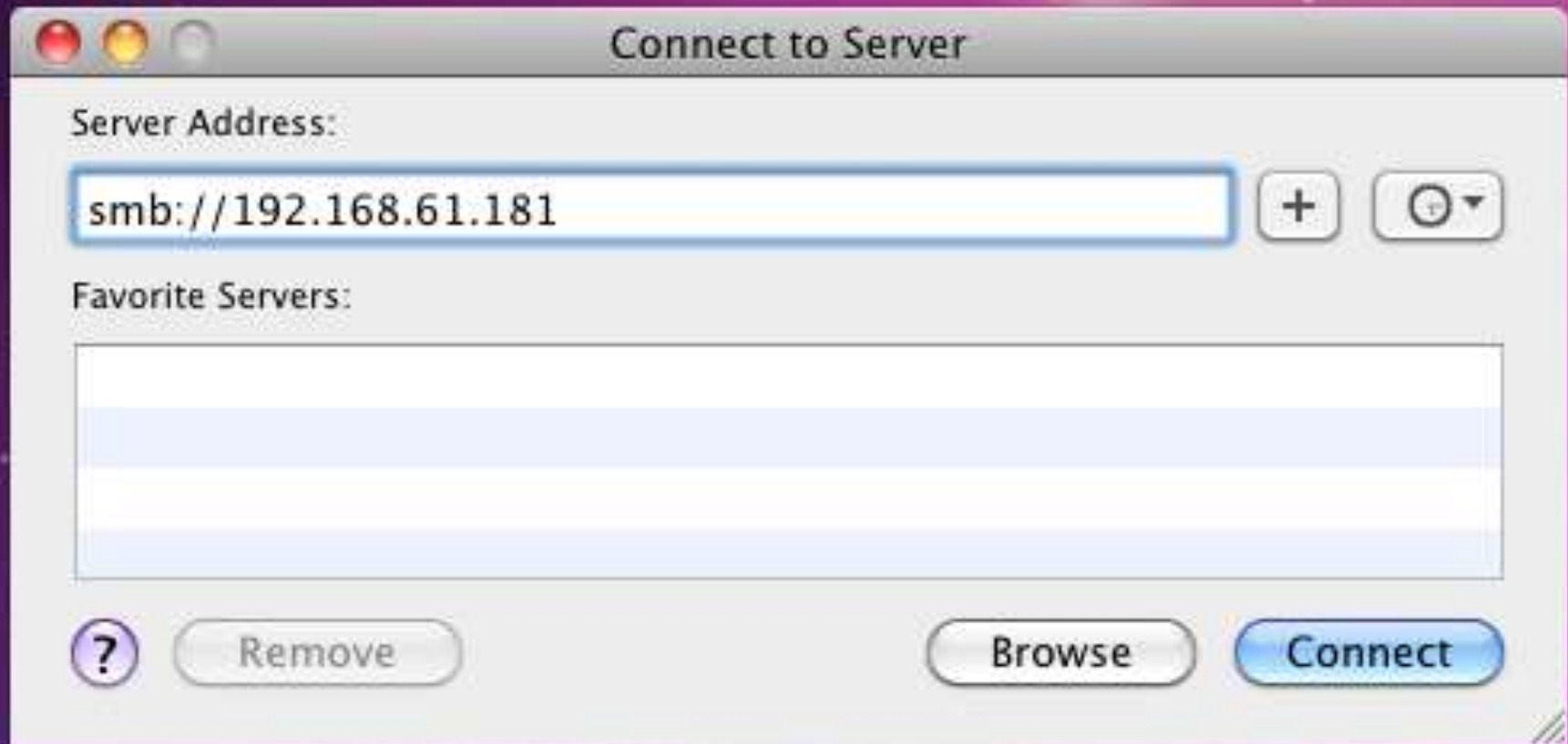


- Back ⌘[
- Forward ⌘]
- Enclosing Folder ⌘↑

- Computer ⌘C
- Home ⌘H
- Desktop ⌘D
- Network ⌘K
- iDisk ▶
- Applications ⌘A
- Documents ⌘O
- Utilities ⌘U

Recent Folders ▶

- Go to Folder... ⌘G
- Connect to Server... ⌘K



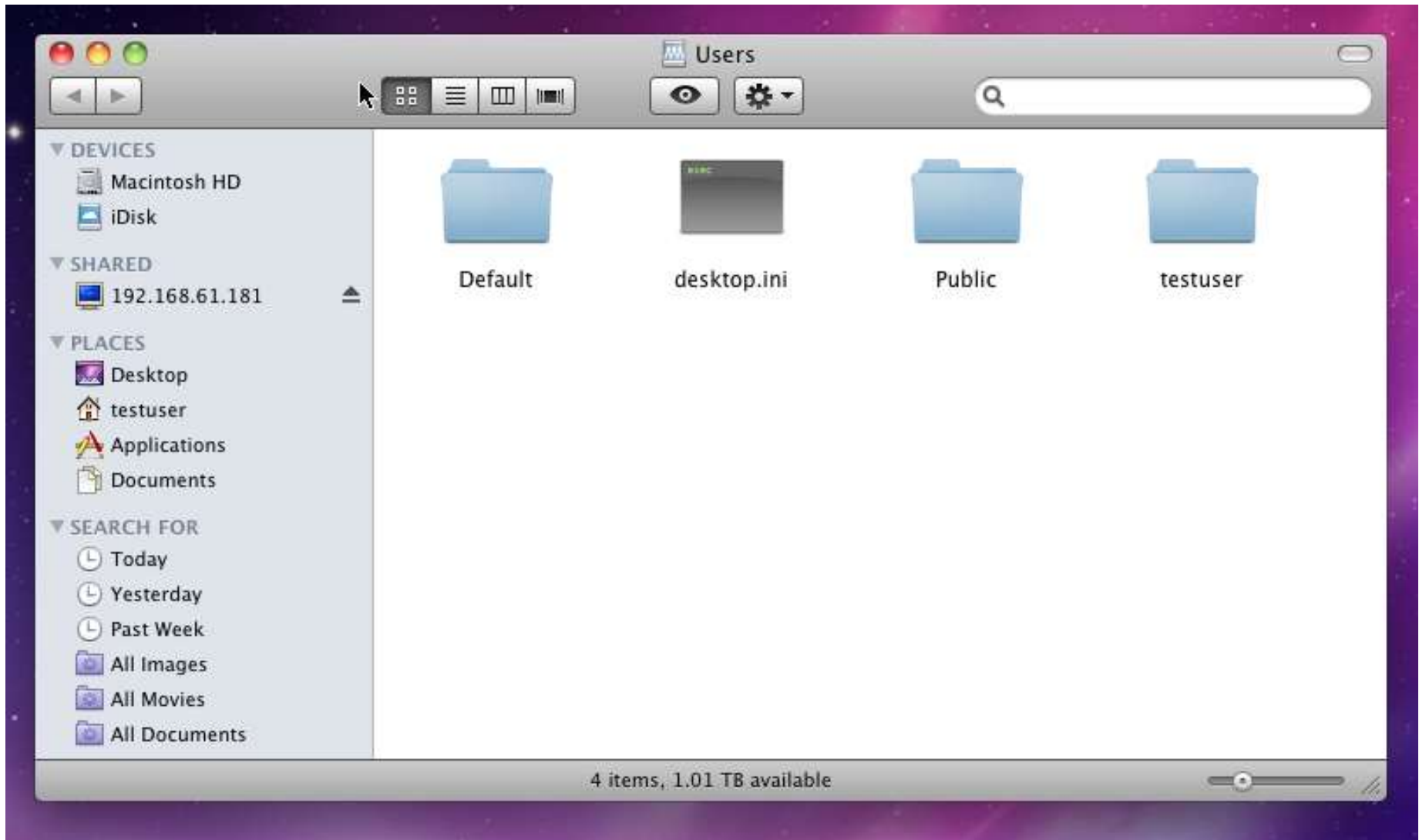


Select the volumes you want to mount on
"192.168.61.181":

- Users

Cancel

OK



testuser

AppData Contacts Desktop Documents

Downloads Favorites Links Music

NTUSER.DAT ntuser.dat.LOG1 ntuser.dat.LOG2 NTUSER.DAT {1abf8d...8}.TM.blf

NTUSER.DAT {1abf8d...trans-ms} NTUSER.DAT {1abf8d...trans-ms} ntuser.ini Pictures

Saved Games Searches Videos

19 items, 1.01 TB available



Administrator: Command Prompt

Windows IP Configuration

Ethernet adapter Ethernet:

```
Connection-specific DNS Suffix . : localdomain
Link-local IPv6 Address . . . . . : fe80::60c8:7994:b942:643a%12
IPv4 Address. . . . . : 192.168.61.181
Subnet Mask . . . . . : 255.255.255.0
Default Gateway . . . . . : 192.168.61.2
```

Tunnel adapter isatap.localdomain:

```
Media State . . . . . : Media disconnected
Connection-specific DNS Suffix . : localdomain
```

Tunnel adapter Teredo Tunneling Pseudo-Interface:

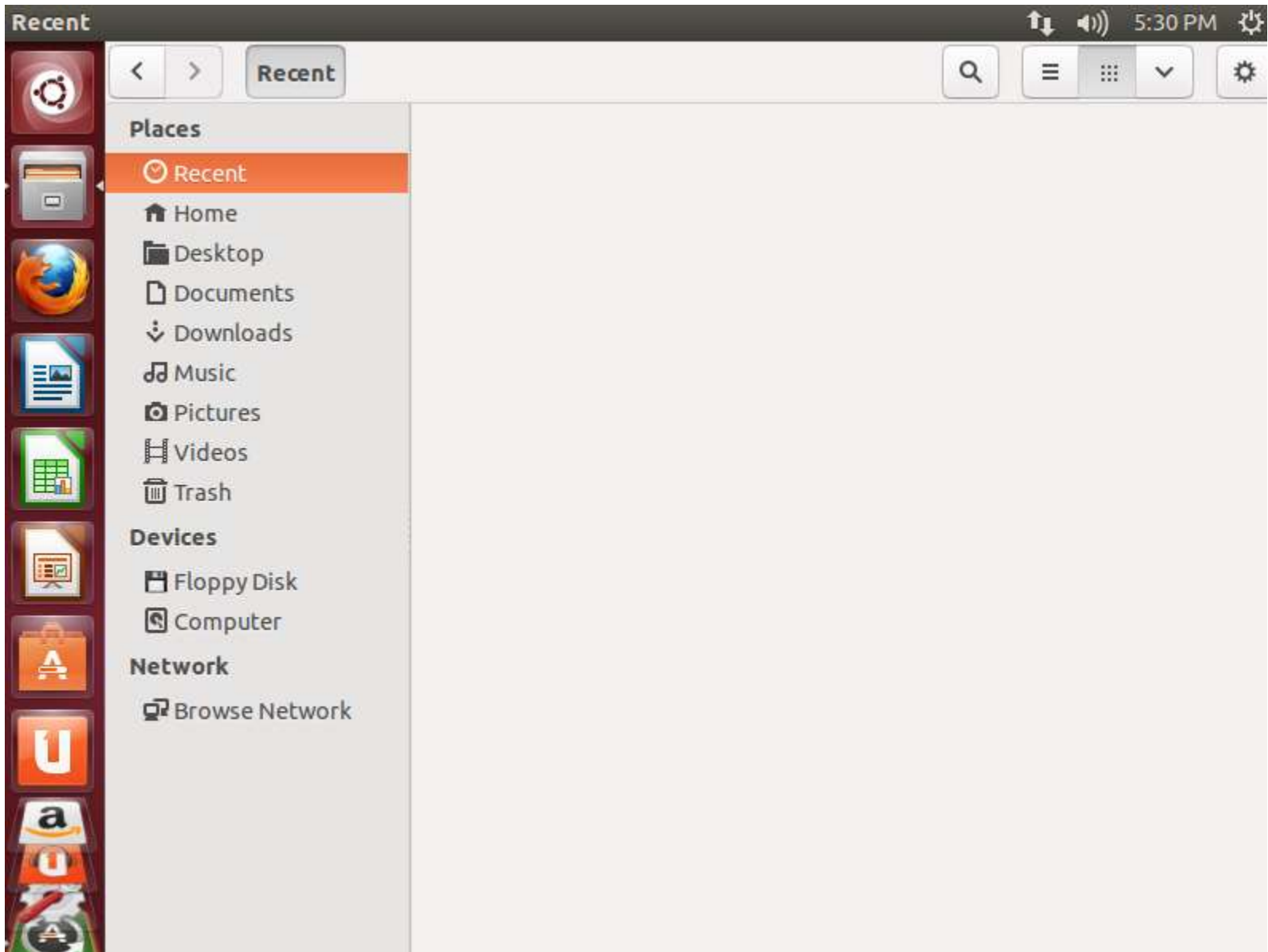
```
Connection-specific DNS Suffix . :
IPv6 Address. . . . . : 2001:0:5ef5:79fb:3803:11d8:3f57:c24a
Link-local IPv6 Address . . . . . : fe80::3803:11d8:3f57:c24a%14
Default Gateway . . . . . : ::
```

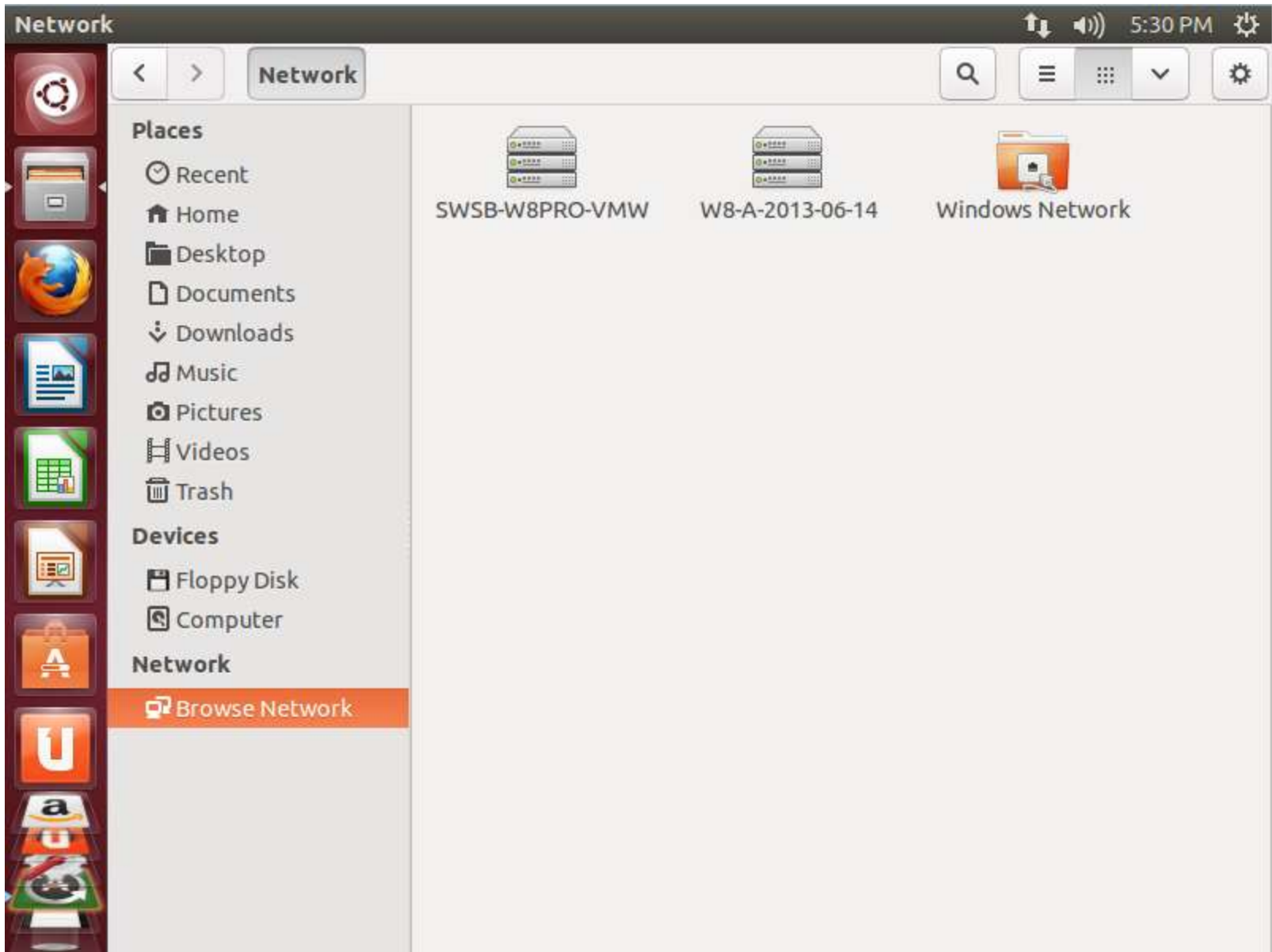
C:\Windows\system32>

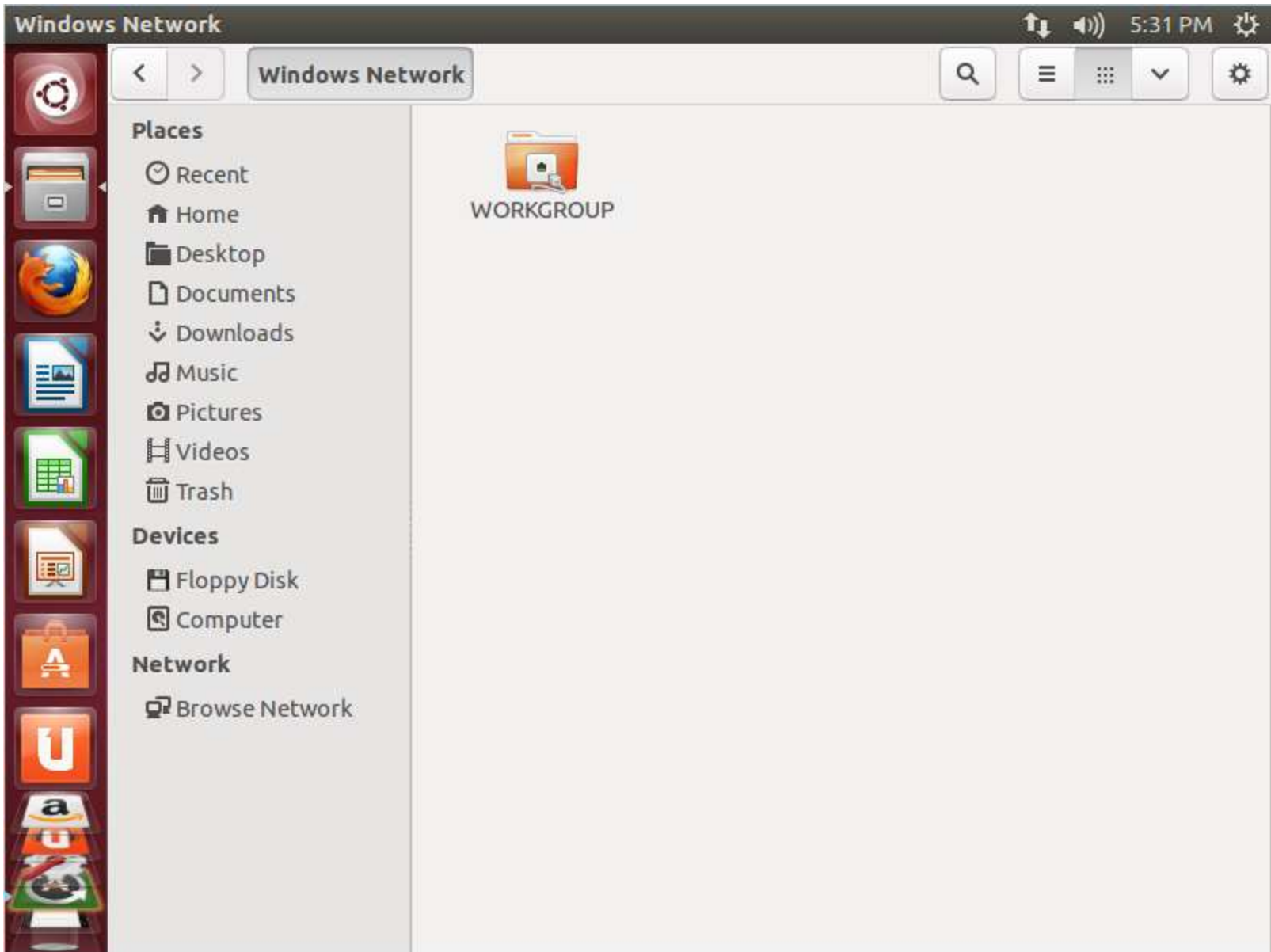


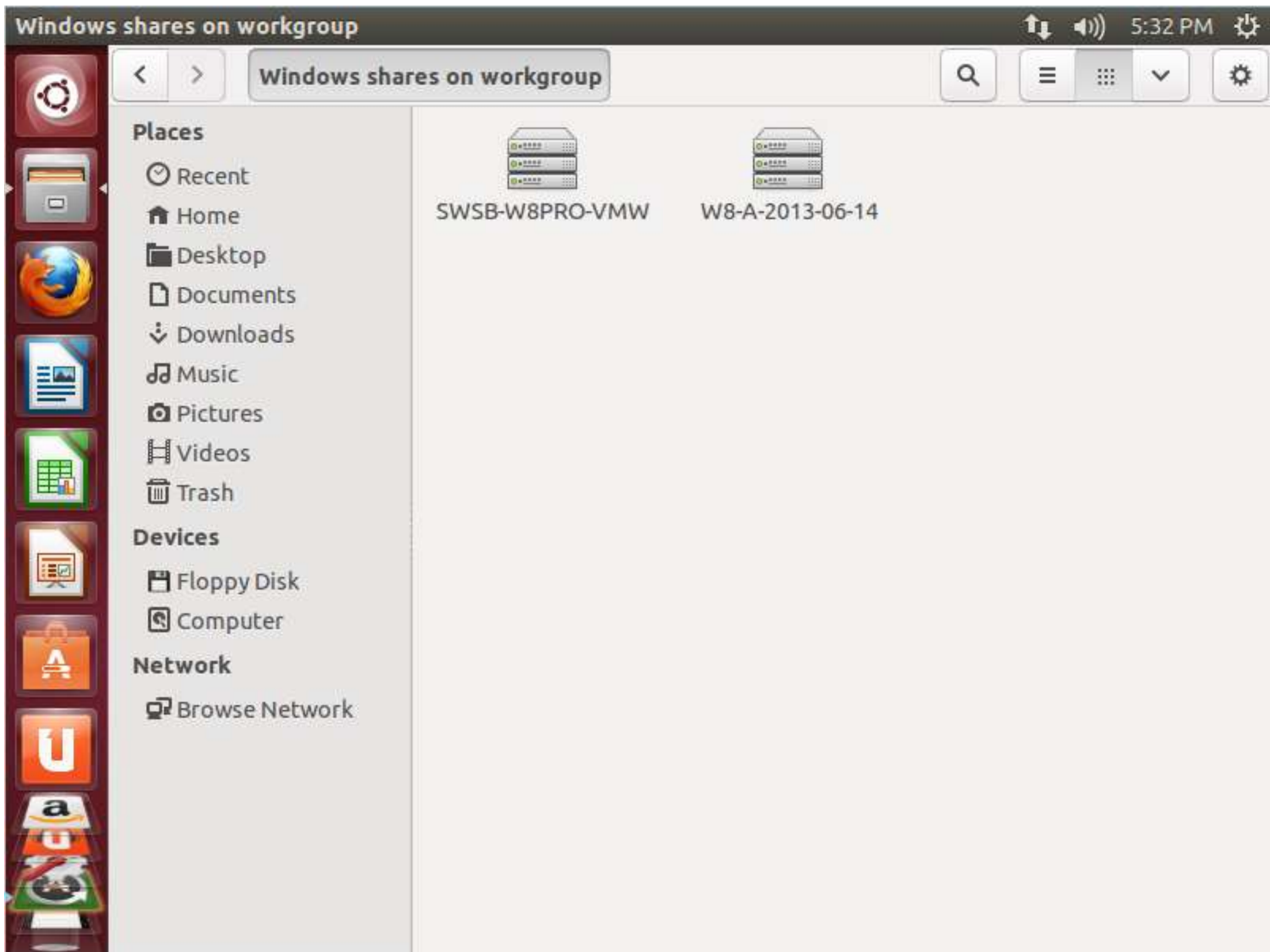


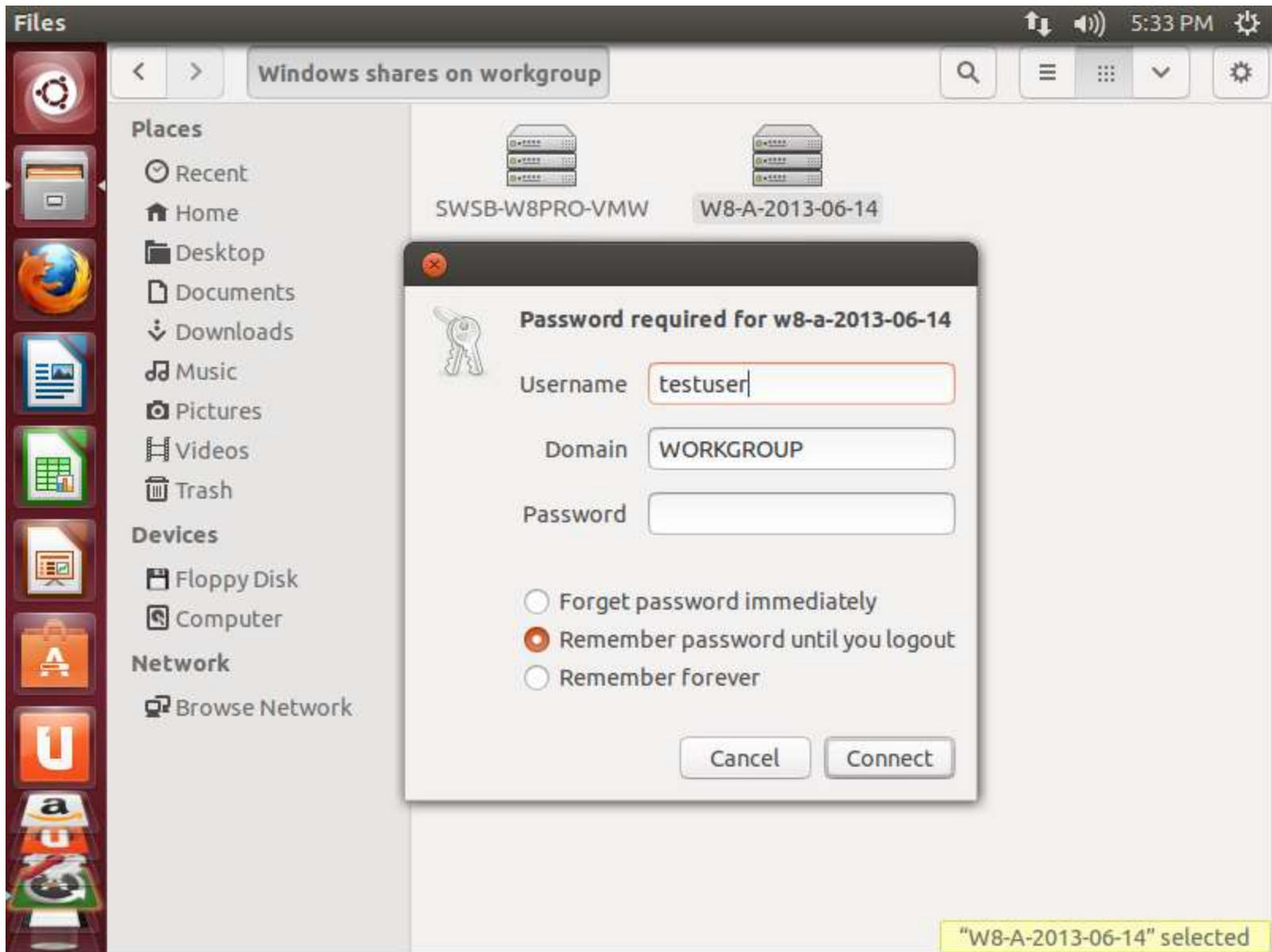
Files

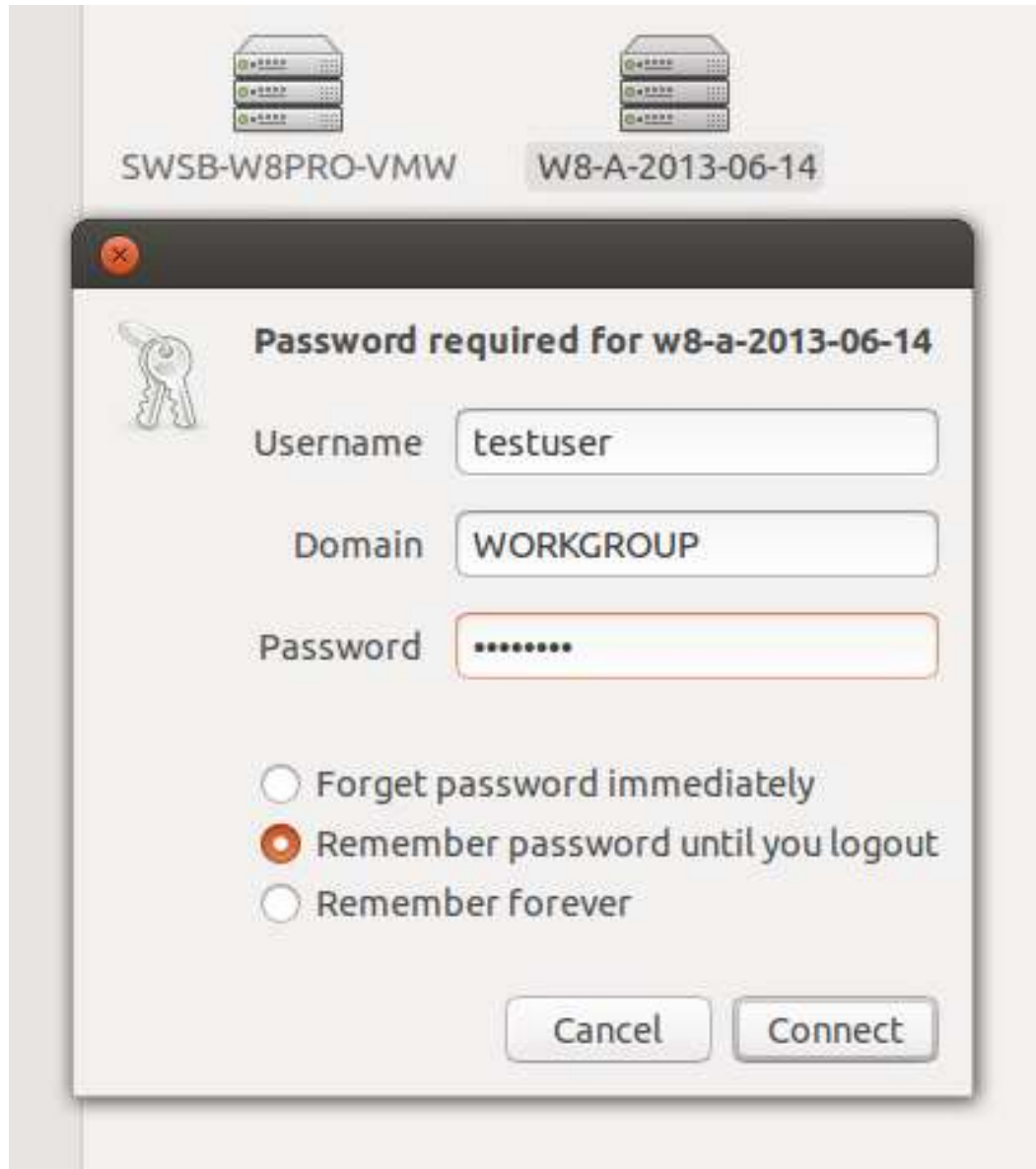


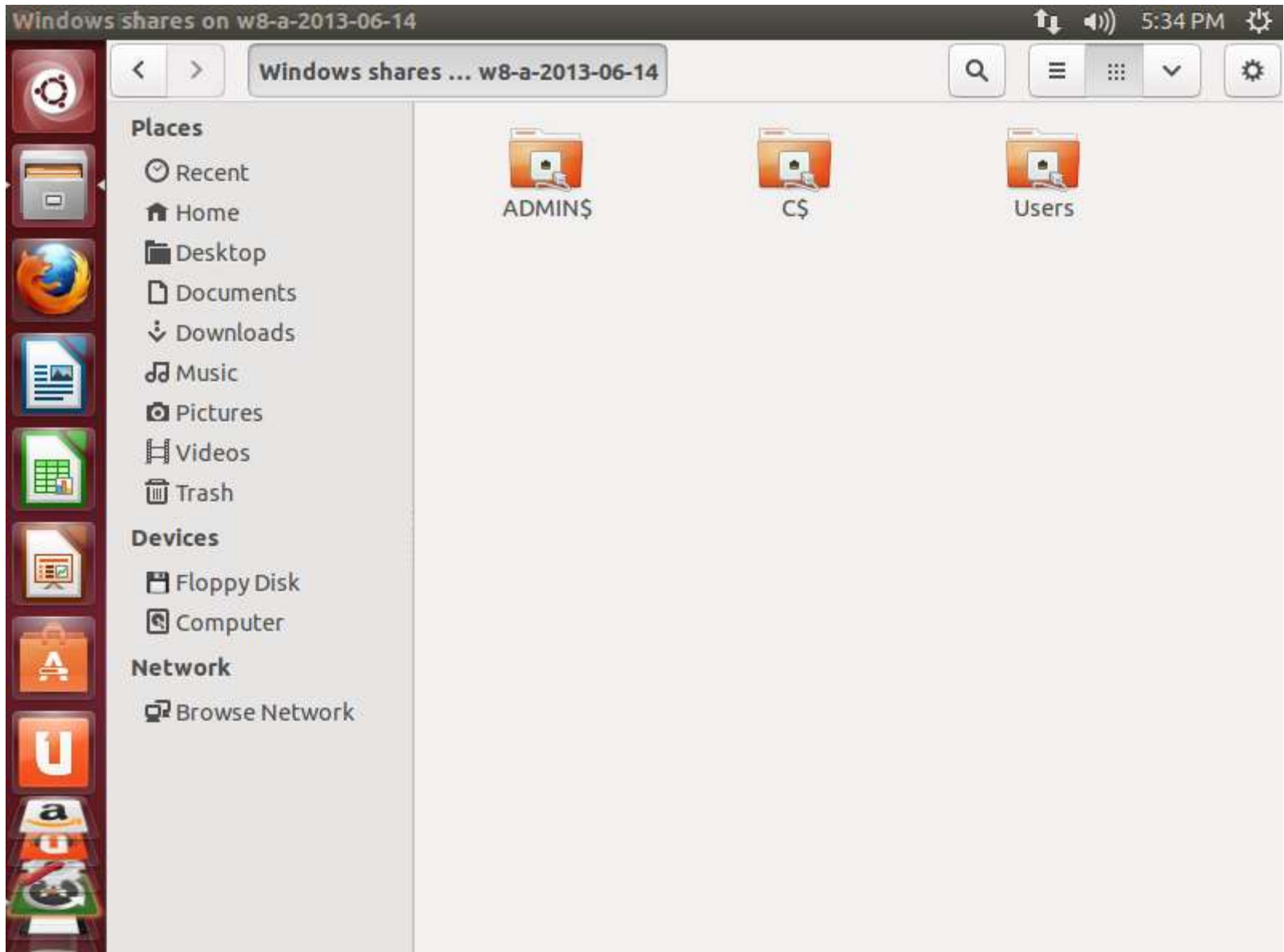


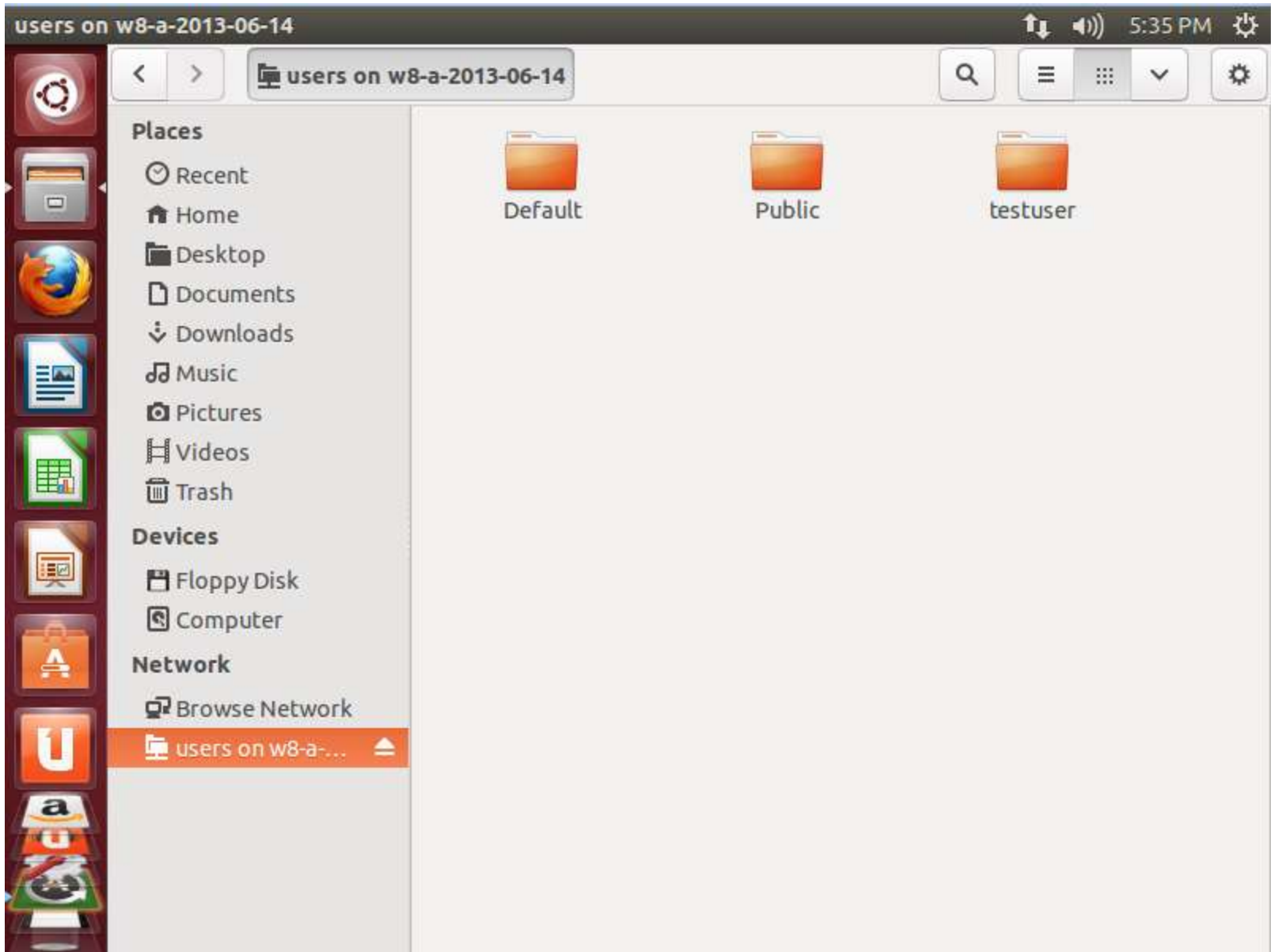


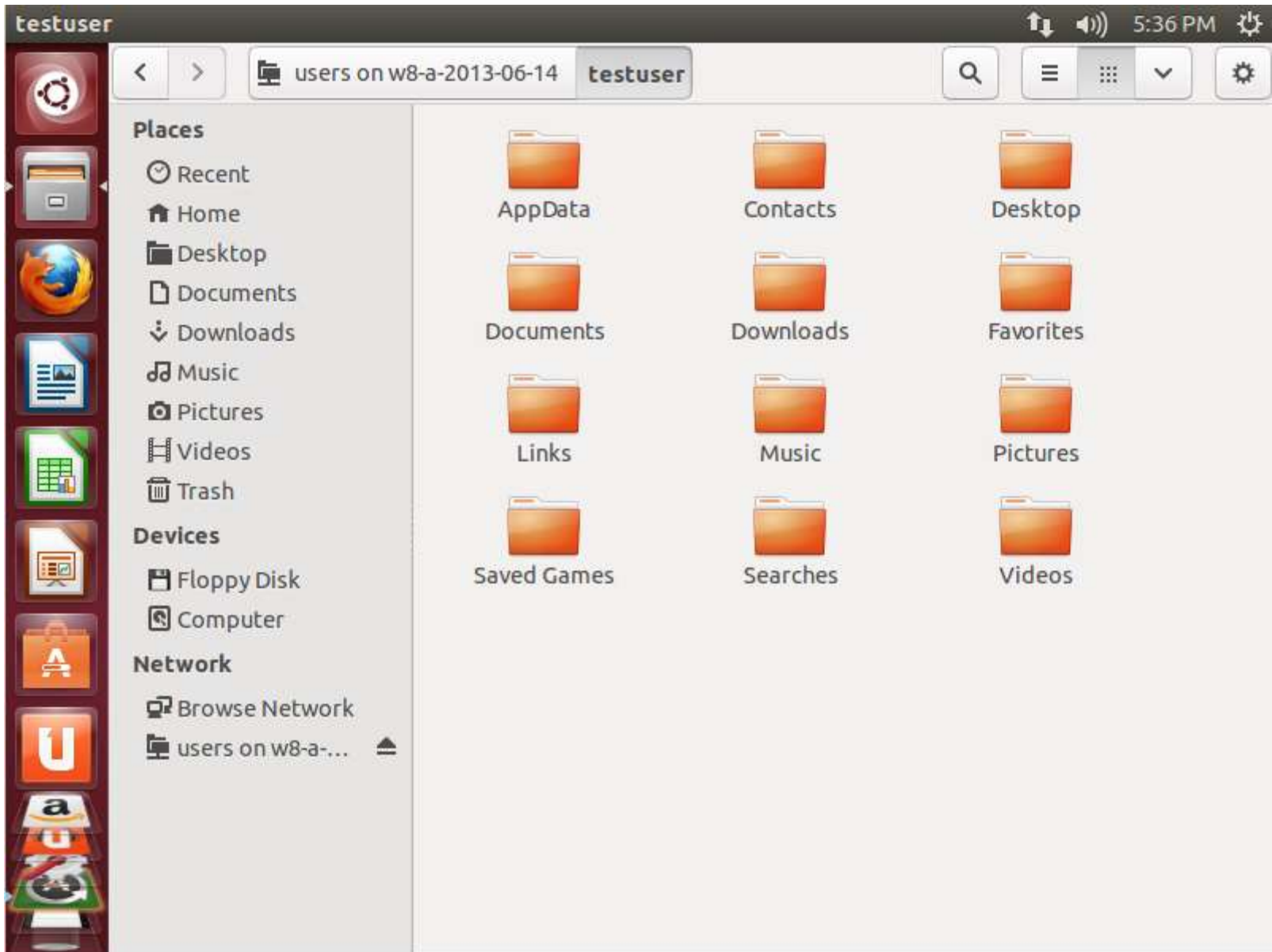












Unexpected File Sharing From a "Windows 8" Computer

- You can turn off the unexpected file sharing of the first user account folder in your "Windows 8" computer.

Unexpected File Sharing From a "Windows 8" Computer

- If you create any additional user accounts in your "Windows 8" computer, these (subsequent) accounts are NOT automatically shared with other "Windows..", Mac OS X 10.n, or Linux computers on your local network.

