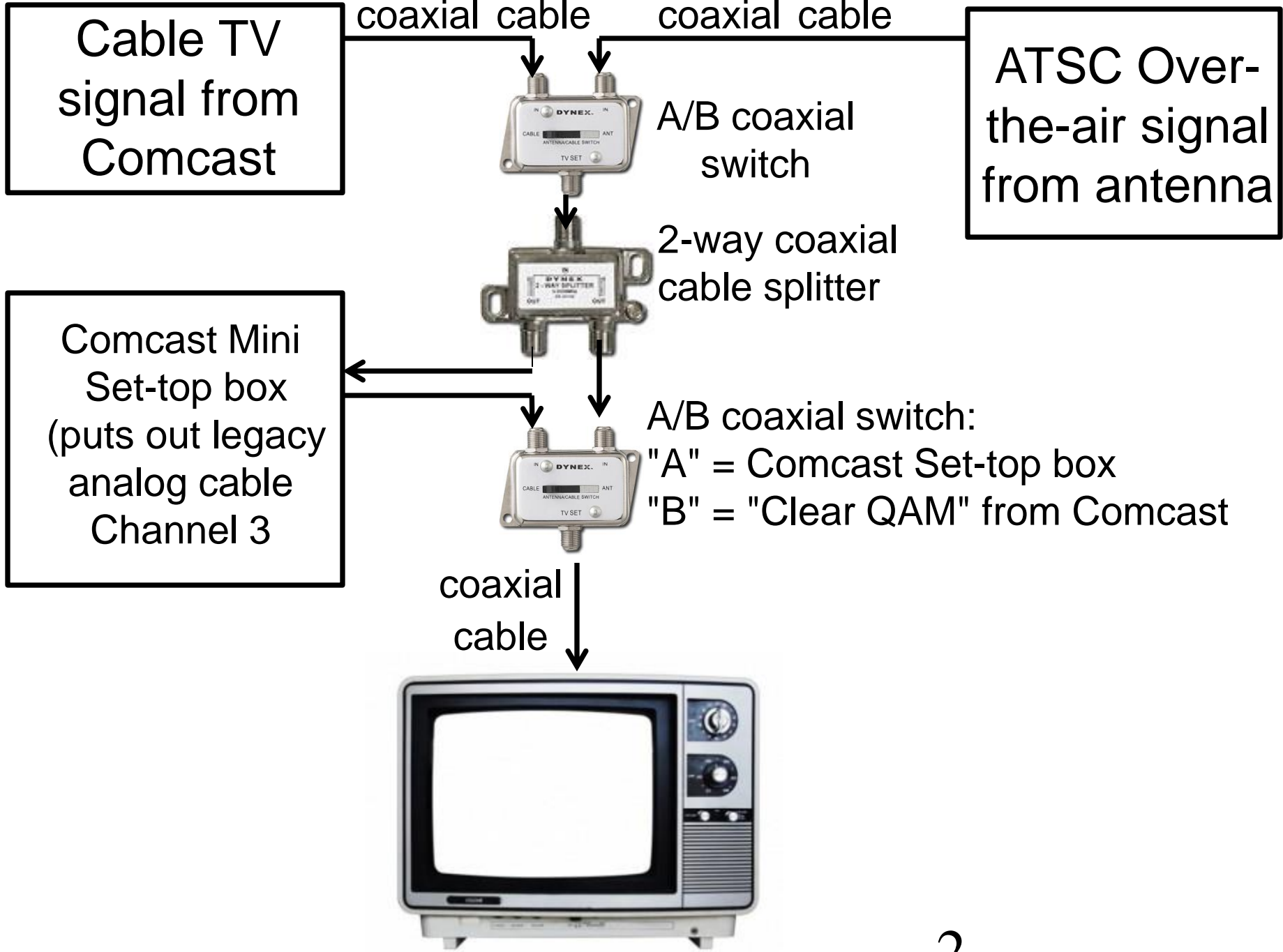
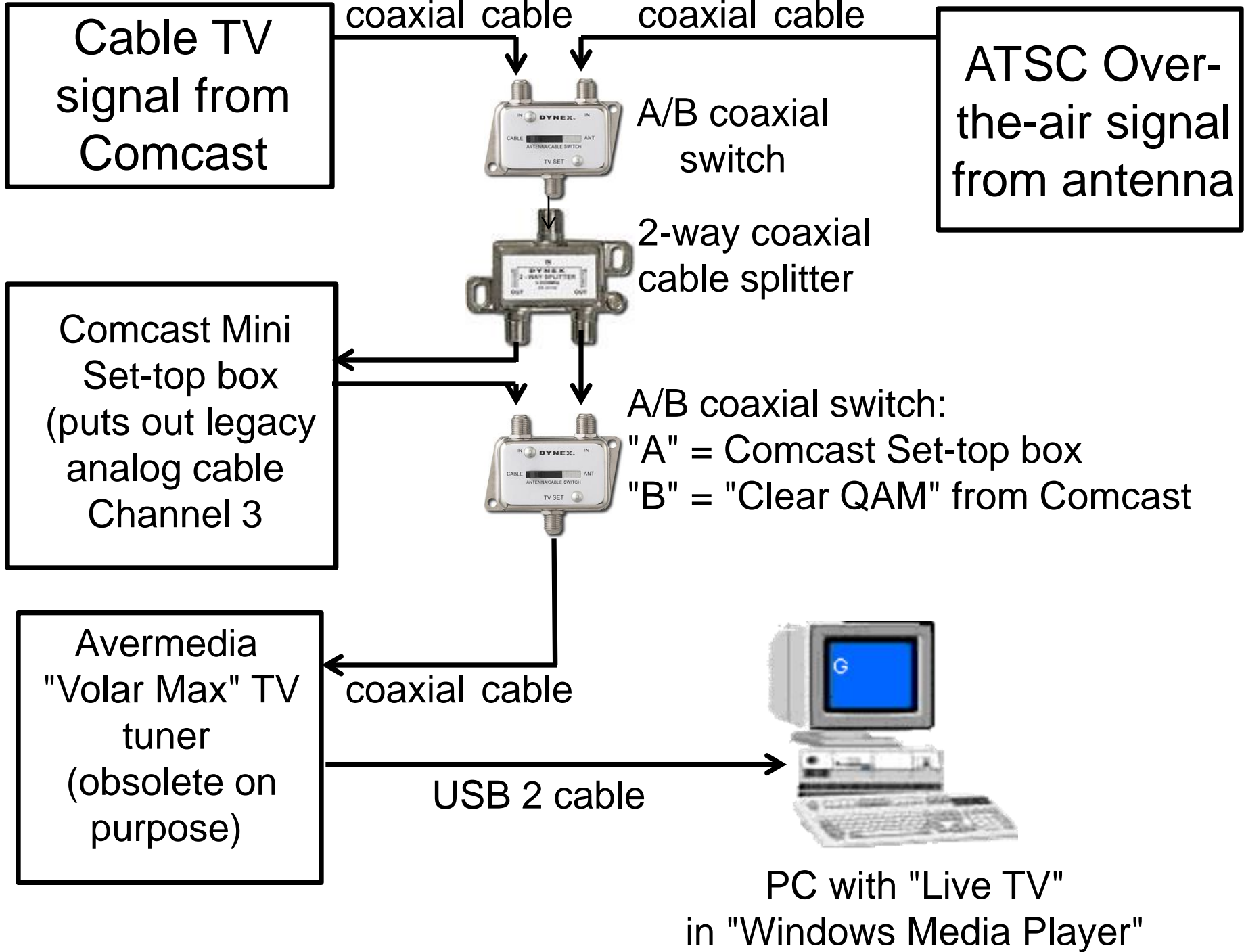


USING "WINDOWS MEDIA CENTER" OR "WINTV" INSTEAD OF A REAL TV SET

by Francis Chao
fchao2@yahoo.com
(520)331-5465







Cable TV
signal from
Comcast

coaxial cable

coaxial cable

ATSC Over-
the-air signal
from antenna



A/B coaxial
switch



2-way coaxial
cable splitter

Comcast Mini
Set-top box
(puts out legacy
analog cable
Channel 3)



A/B coaxial switch:
"A" = Comcast Set-top box
"B" = "Clear QAM" from Comcast

Avermedia
"Volar Max" TV
tuner
(obsolete on
purpose)

coaxial cable

USB 2 cable



PC with "Live TV"
in "Windows Media Player"

VIRTUAL TVs

- You need to add a tv tuner to your computer (unless it already has one)
 - "Media Center" computers tend to already have a tv tuner in them--run Belarc to see what your computer has
 - TV Tuner options
 - USB TV tuner
 - PCI TV tuner
 - PCIe TV tuner
 - Network-attached tuner

VIRTUAL TVs (continued)

- A "Gotcha":
 - Some older set-top boxes (especially to mini "digital transport adapters" only put out a Channel 3 or Channel 4 "analog cable" signal while most tuners now only accept ATSC and clear QAM signals.
 - If you have one of these older set-top boxes, buy a tuner than has the old "analog cable" capability.

VIRTUAL TVs (continued)

- USB, PCI, and PCIe tv tuner brands
 - Avermedia
 - Hauppauge
 - Acer

VIRTUAL TVs (continued)

- <http://www.avermedia-usa.com//AVerTV/Product/ProductList.aspx?IID=3>
- <http://www.hauppage.com/>

VIRTUAL TVs (continued)

- Use "Windows Media Center" for "Windows"
- Use "Kaffeine" for Linux
- Most tuners are bundled with atrocious software for simulating a tv
- Use the bundled and other free atrocious software for fun but don't rely on it

VIRTUAL TVs(continued)

- Avermedia tuners are bundled with "Aver MediaCenter" software.
- Hauppauge tuners are bundled with "WinTV" software.
 - Better picture than "Windows Media Center" but #!*@!*..
- Asus tuners are bundled with "GadgeTV", "Pop-UpTv", and "ExpressTV" software

VIRTUAL TVs (continued)

–To determine your listing of cable channels:

- Web site of your cable provider
- <http://silicondust.com/support/channels>
- <http://titantv.com>

VIRTUAL TVs (continued)

- Signal options
 - Over-the-air (OTA) “live TV” option (Advanced Television Systems Committee=ATSC)
 - Antenna on roof or in window
 - Use antennaweb.org to determine what TV stations are in your area.

VIRTUAL TVs (continued)

- Signal options (continued)
 - Cable TV option
 - Set-top box from cable provider (or mini set-top box = digital transport adapter)
 - Clear QAM (fewer channels than with a set-top box)

Or use a antenna/cable switch (=A/B or A/B/C switch) or manually switch between any or all of the above 3 signal options!

VIRTUAL TVs (continued)

- "Windows Media Center" requires that you perform a one-time "live TV setup" before you can watch "live TV"
- When we attempted to perform "live TV setup" with our Comcast mini "set-top box", we received the following unfriendly error message:

Windows Media Center

12:18 AM

Extras
Pictures + Videos
Music
Movies

TV



recorded tv



live tv setup

Sports

VIRTUAL TVs (continued)

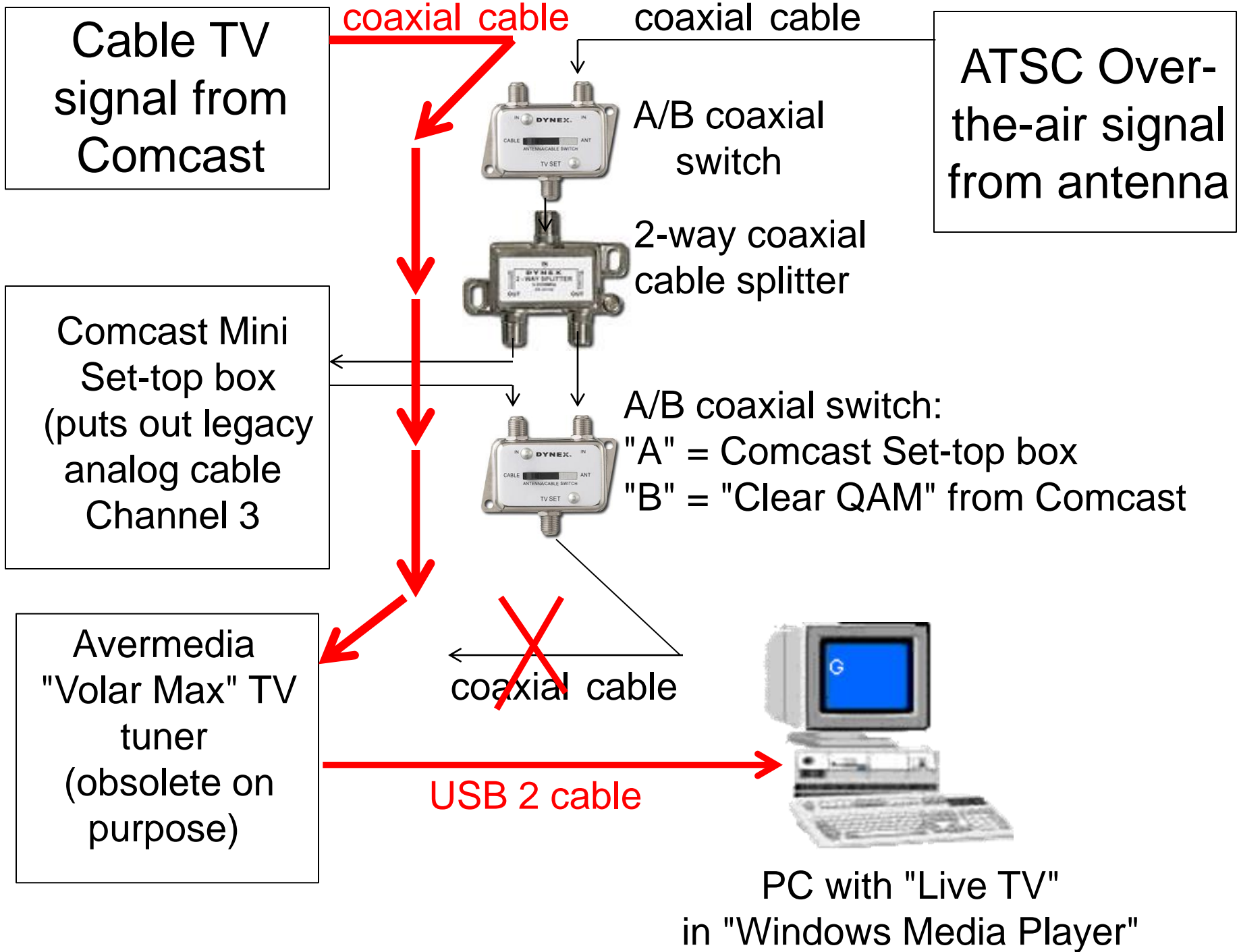
- When we attempted to perform "live TV setup" with our Comcast mini "set-top box", we received the following unfriendly error message:



VIRTUAL TVs (continued)

Workaround for Windows Media Center's "IR Hardware Configuration" error message:

- Workaround Step 1:
Temporarily remove the mini "set-top box" and connect the cable TV signal directly to the TV tuner:



Cable TV signal from Comcast

coaxial cable

coaxial cable

ATSC Over-the-air signal from antenna



A/B coaxial switch



2-way coaxial cable splitter

Comcast Mini Set-top box (puts out legacy analog cable Channel 3)



A/B coaxial switch:
 "A" = Comcast Set-top box
 "B" = "Clear QAM" from Comcast

Avermedia "Volar Max" TV tuner (obsolete on purpose)

~~coaxial cable~~

USB 2 cable



PC with "Live TV" in "Windows Media Player"

VIRTUAL TVs (continued)

Workaround for Windows Media Center's "IR Hardware Configuration" error message (continued):

- Workaround Step 2:
Shut down "Windows Media Center".
- Workaround Step 3:
Reboot the computer

VIRTUAL TVs (continued)

Workaround for Windows Media Center's "IR Hardware Configuration" error message (continued):

- Workaround Step 4:
Start "Windows Media Center"
- Workaround Step 5:
Locate "live TV setup" and click on it.

Extras
Pictures + Videos
Music
Movies

TV



recorded tv



live tv setup

Sports

VIRTUAL TVs (continued)

Workaround for Windows Media Center's "IR Hardware Configuration" error message (continued):

- Workaround Step 6:
For each successive screen, make your selection with the "radio buttons", then click on the "Next" button:

TV Setup

Region

Your region is used to configure your computer for local TV services.

Region: United States

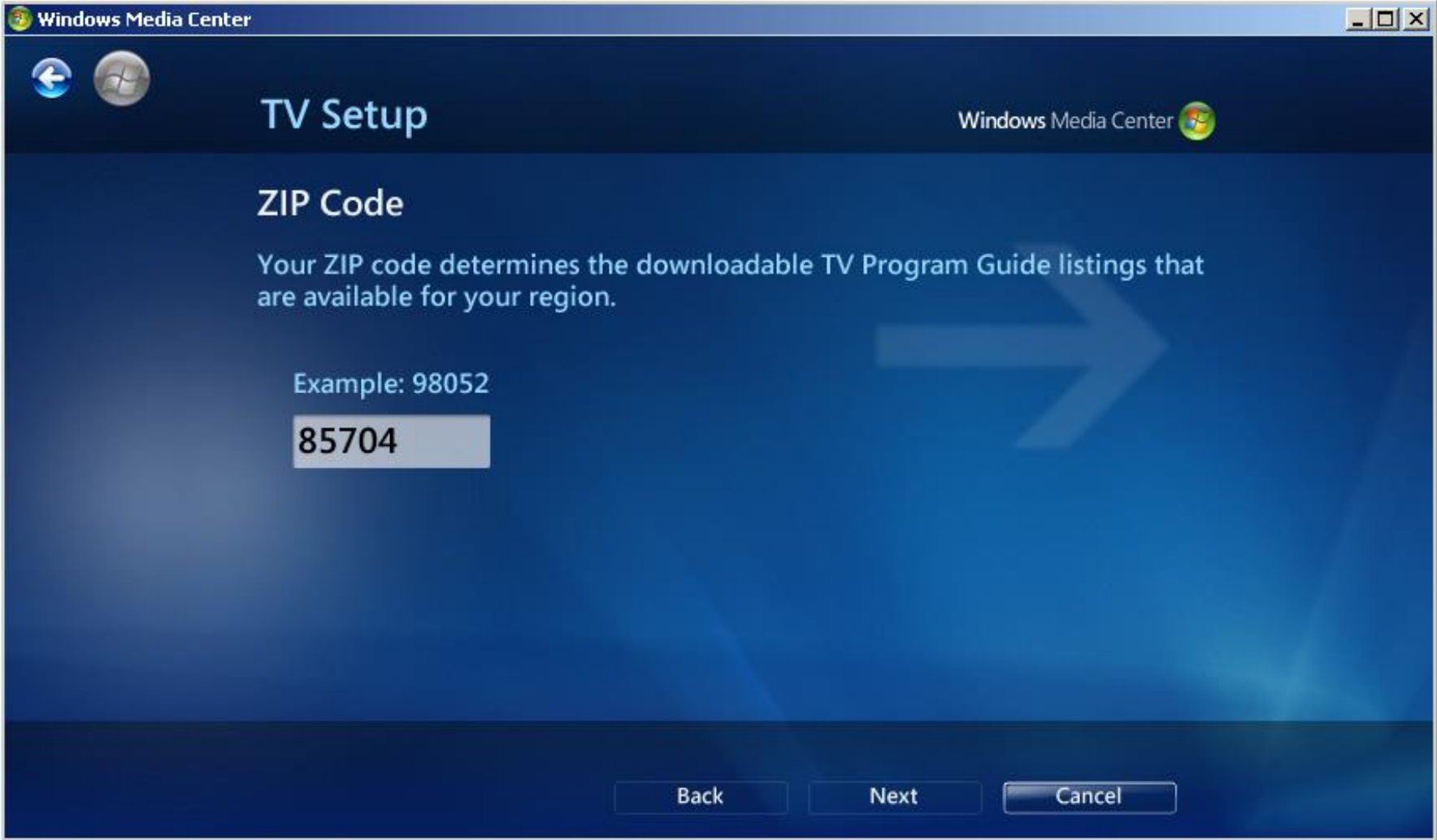
Is this the correct region?

- Yes, use this region to configure TV services
- No, I want to select a different region

Back

Next

Cancel



TV Setup

TV Channel Scan

Windows Media Center has finished scanning for additional TV channels you receive.

Scan again

Delete All

14 channel(s) found

- KGUNDT3 (KGUN-DT3)
- KGUNDT (KGUN-DT)
- K04QPD (K04QP-D)
- KTTUDT2 (KTTU-DT2)

1 of 14 ^ v

Next

TV Setup

TV Signal Setup Finished

You have finished configuring Windows Media Center with the following settings:

Digital Cable (ClearQAM): Tucson, Comcast (Digital) (1 tuner)
Analog Cable: Tucson, Comcast (1 tuner)

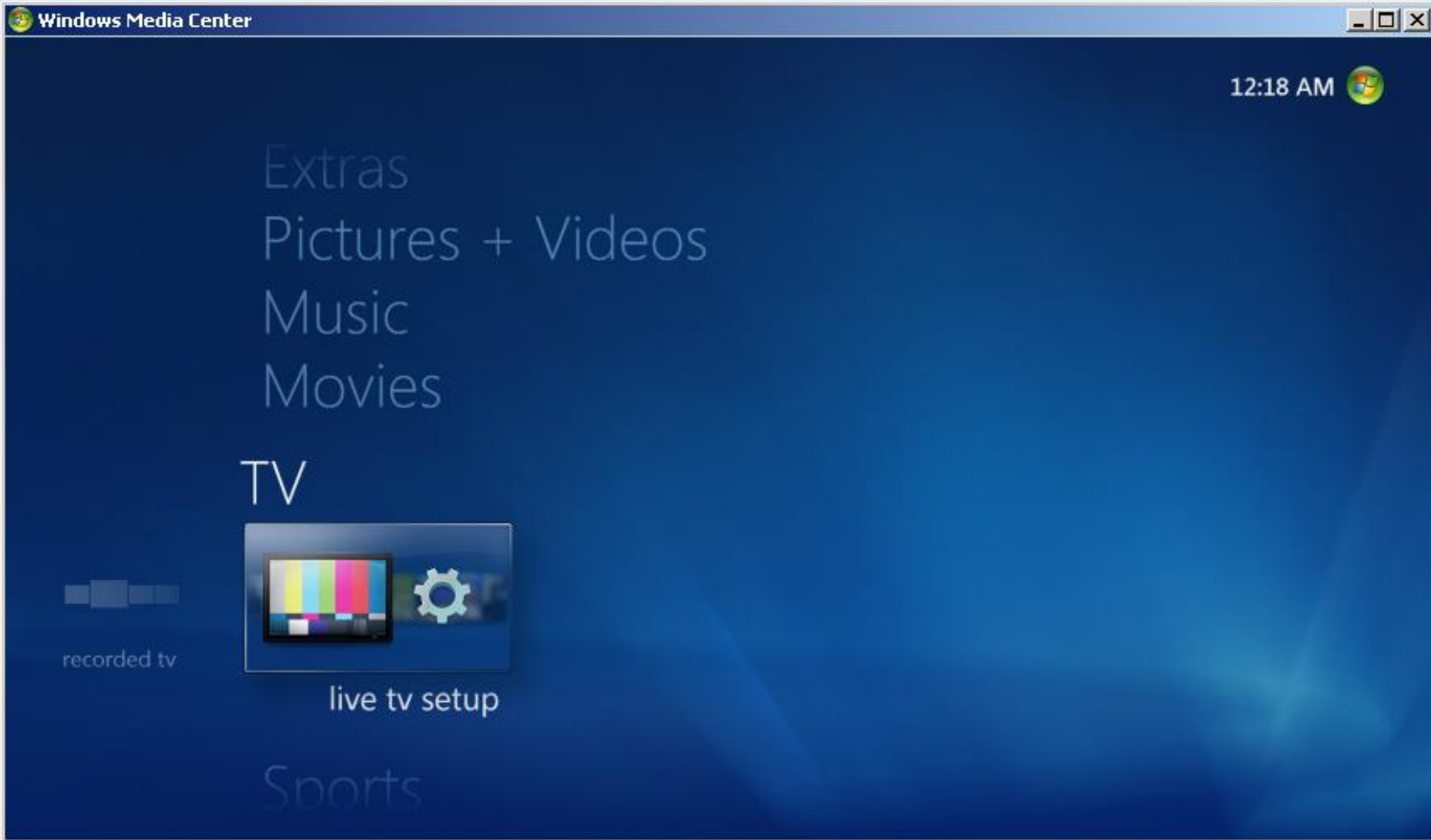
Select Finish to exit.

Finish

VIRTUAL TVs (continued)

Workaround for Windows Media Center's "IR Hardware Configuration" error message (continued):

- Workaround Step 7:
Locate and click on "live TV" in "Windows Media Center". Since the set-top box is not attached, you will be viewing "clear QAM" channels:

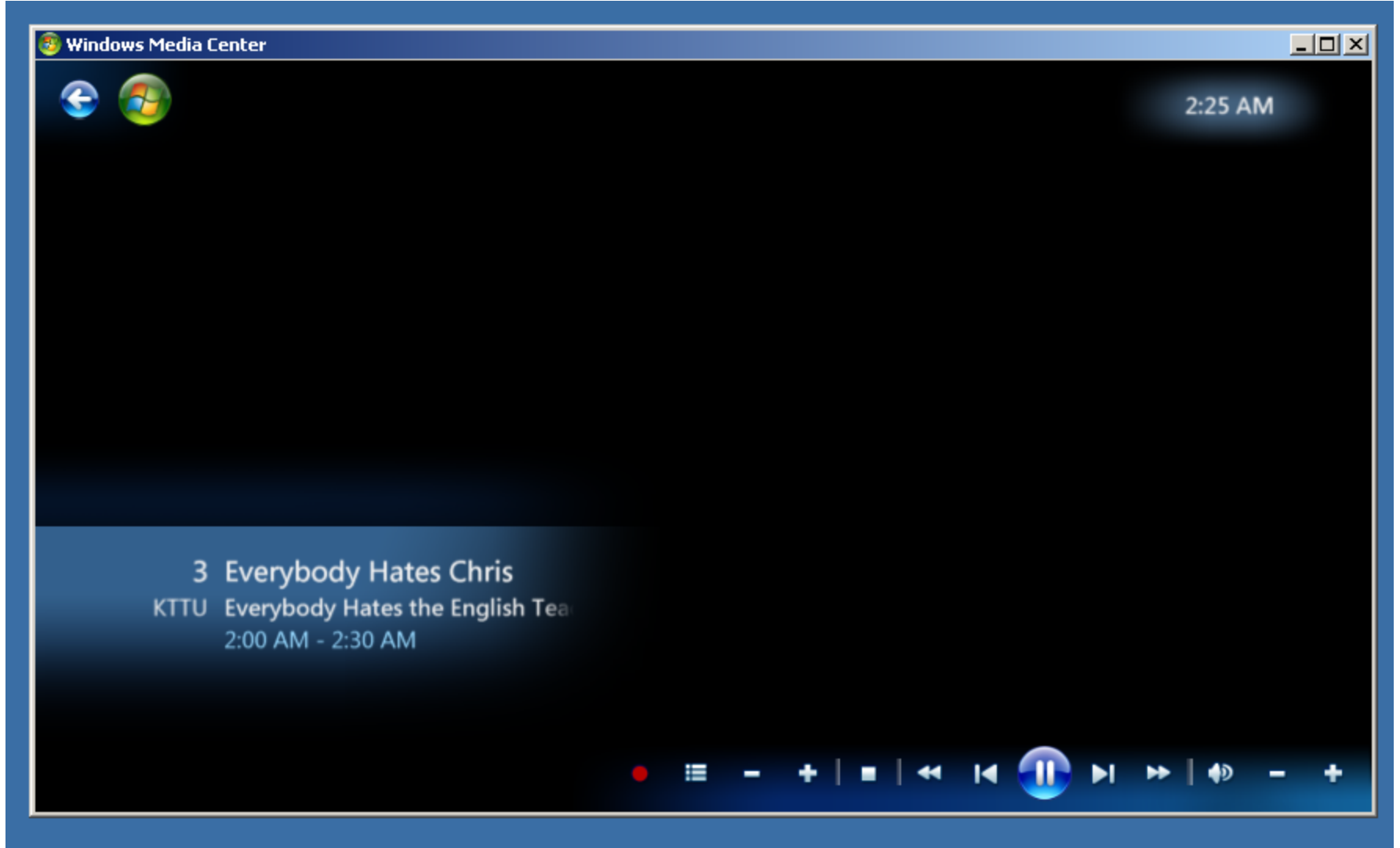




VIRTUAL TVs (continued)

Workaround for Windows Media Center's "IR Hardware Configuration" error message (continued):

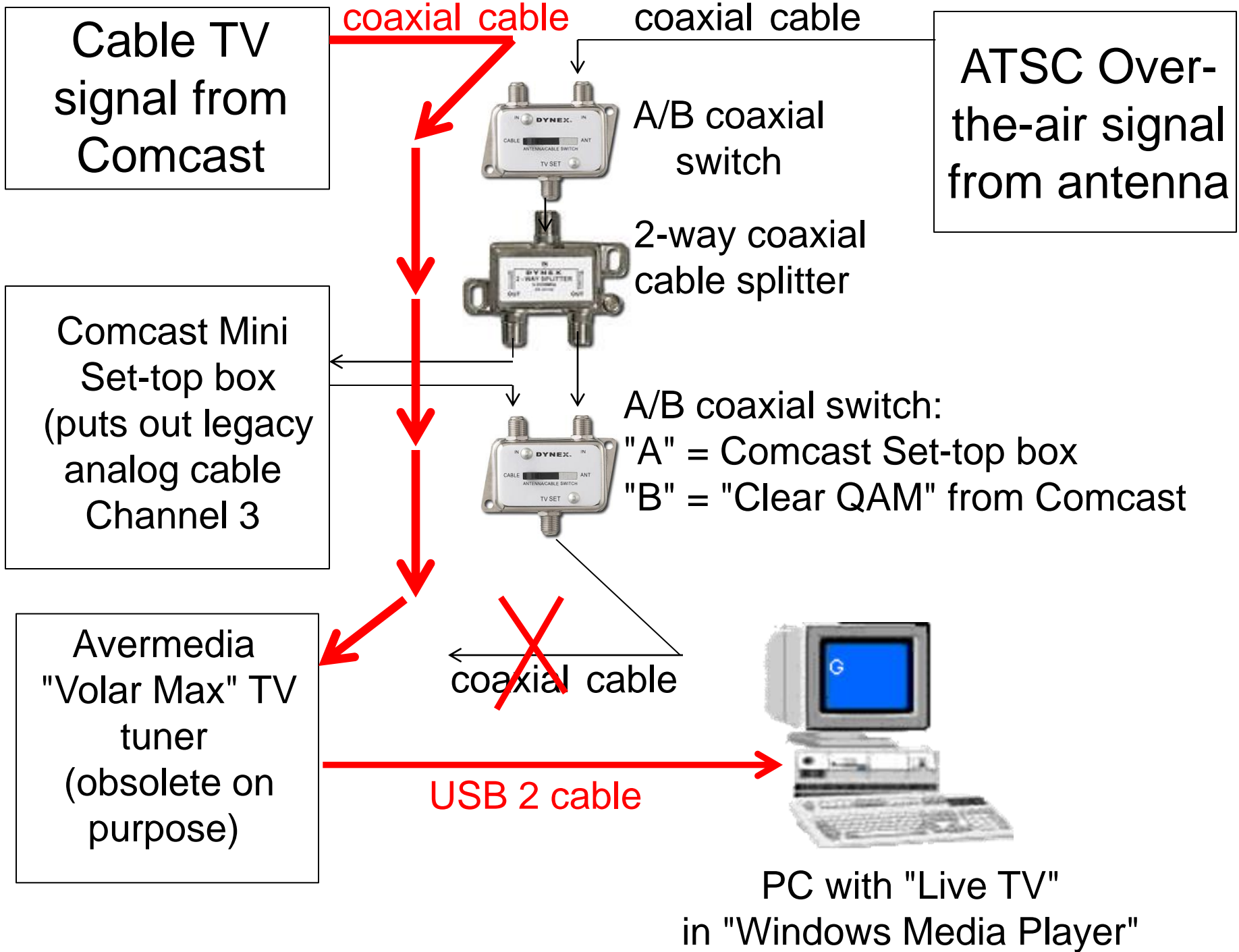
- Workaround Step 8:
Select "Channel 3", if your set-top box requires that you stay on "Channel 3":

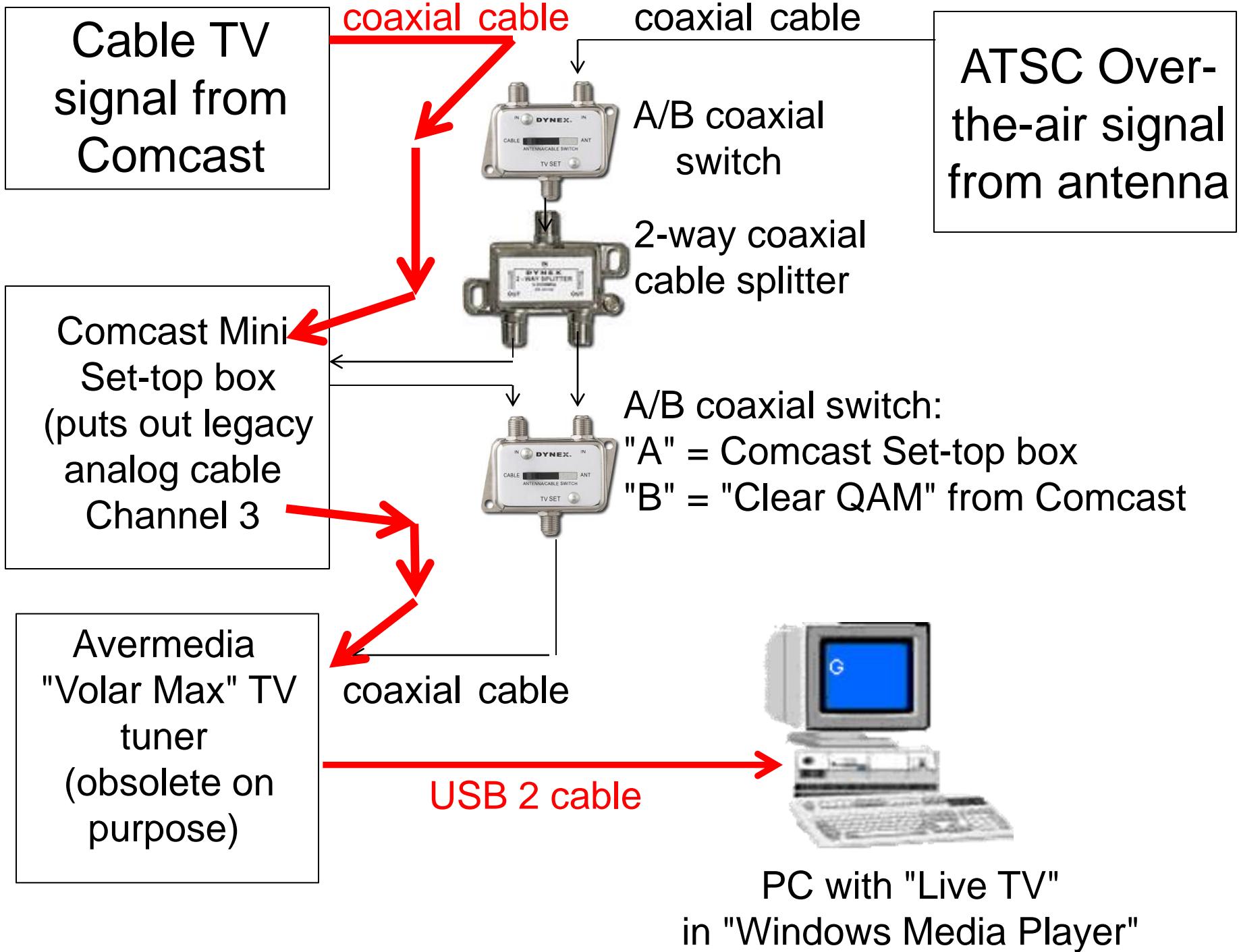


VIRTUAL TVs (continued)

Workaround for Windows Media Center's "IR Hardware Configuration" error message (continued):

- Workaround Step 9:
Re-connect the set-top box by inserting it between the cable TV signal and the TV tuner:





VIRTUAL TVs (continued)

Workaround for Windows Media Center's "IR Hardware Configuration" error message (continued):

- Workaround Step 10:
Use the channel selection buttons of the wireless "remote" of the "set-top box" to select channels:

Windows Media Center



ENG

SYRIA IN TURMOIL

7
kold