

"WINDOWS 7 ENTERPRISE TRIAL"-- HOW TO TRY "WINDOWS 7" FOR FREE

OBJECTIVE AND DESIRED RESULT:

Download and try the "Windows 7 Enterprise" operating system for free, using available computer hardware. When the time-limited copy of "Windows 7 Enterprise Trial" expires, you can then use one of several strategies to revert back to your original copy of "Windows..".

DETAILS AND TACTICS:

You can download a trial copy of "Windows 7 Enterprise" at <http://technet.microsoft.com/en-us/evalcenter/cc442495.aspx?ITPID=wtcpqs>. This top half of this Web page looks like this:

The screenshot shows a web browser window with the address bar displaying `http://technet.microsoft.com/en-us/evalcenter/cc442495.aspx`. The page title is "Windows 7 Enterprise | Trial, Evaluation, Test, Download - Windows Internet Explorer". The browser's menu bar includes "File", "Edit", "View", "Favorites", "Tools", and "Help". The address bar contains navigation icons and a search box with "Google". The browser's toolbar includes "Home", "Feeds (J)", "Read Mail", "Print", "Page", "Safety", "Tools", and "Help".

The page content is from the "TechNet Evaluation Center". The breadcrumb trail is "TechNet Evaluation Center > Home > Windows 7 Enterprise | Trial, Evaluation, Test, ...". A "Home" button is visible in the top left, and "Microsoft | TechNet" is in the top right. A search box contains "Search TechNet with Bing".

The main heading is "Windows 7 Enterprise 90-day Trial". Below it is a sub-heading "SPRINGBOARD SERIES for Windows® 7" with a navigation path "Discover > Explore > Pilot > Deploy > Manage".

The text reads: "Welcome to the Windows 7 Enterprise 90-day Trial. It is designed specifically for IT Professionals, so that you can test your software and hardware on a final version of the product. In addition, it provides the opportunity for you to become more familiar with the key improvements over previous versions of the Windows operating system, and experience firsthand how Windows 7 can make your PC environment more productive, secure, and manageable."

A section titled "Is the evaluation edition really for you?" lists qualifying programs: "Microsoft Partner Network", "MSDN Subscriber (Developer)", "TechNet Plus Subscriber", and "Volume License/Software Assurance customer".

A section titled "Here's what you need to know:" states: "This is trial software designed for IT Professionals interested in experiencing the Windows 7 Enterprise on behalf of their organization so please read the following to get an idea of the risks and key things you need to know before you install. We do not recommend that you install this if you are a not an IT Professional or not professionally managing corporate networks."

A section titled "Guidelines on usage:" contains a bulleted list of terms and conditions:

- **Protect your PC and data.** Be sure to back up your data and please don't test Windows 7 on your primary home or business PC.
- **You have 10 days to activate the product.** If not activated within 10 days, the system will shut down once every hour until activated. Unsure on how to activate? Visit our [FAQ](#).
- **The 90-day Trial** is the full working version of the Windows 7 Enterprise, the version most of you will be working with in your corporate environment. It will not require a product key (it is embedded with the download).
- **The 90-day Trial** will shut down once every hour when you have reached the end of the 90-day evaluation period.
- **The 90-day Trial** is offered for a limited time and in limited quantity. The download will be available through December 31, 2010, while supplies last.
- **After the 90-day Trial expires**, if you wish to continue to use Windows 7 Enterprise, please note that you will be required to purchase and perform a clean installation of Windows 7, including drivers and applications. Please keep this in mind; Windows 7 Enterprise is not available through retail channels.
- **Technical details/updates/questions:** Please review our [FAQ](#) or visit the [Windows 7 support forum](#).
- **Stay informed.** You can keep up with general technical information and news by following the [Springboard Series blog](#). Want technical guidance, tips, and how-to's? Visit the [Springboard Series on TechNet](#).

The browser's status bar at the bottom shows "Internet | Protected Mode: On" and a zoom level of "100%".

The bottom half of this Web page looks like this:

Windows 7 Enterprise | Trial, Evaluation, Test, Download - Windows Internet Explorer

http://technet.microsoft.com/en-us/evalcenter/cc442495.aspx

File Edit View Favorites Tools Help

Windows 7 Enterprise | Trial, Evalu... Home Feeds (1) Read Mail Print Page Safety Tools Help

- **The 90-day Trial** will shut down once every hour when you have reached the end of the 90-day evaluation period.
- **The 90-day Trial** is offered for a limited time and in limited quantity. The download will be available through December 31, 2010, while supplies last.
- **After the 90-day Trial expires**, if you wish to continue to use Windows 7 Enterprise, please note that you will be required to purchase and perform a clean installation of Windows 7, including drivers and applications. Please keep this in mind; Windows 7 Enterprise is not available through retail channels.
- **Technical details/updates/questions:** Please review our [FAQ](#) or visit the [Windows 7 support forum](#).
- **Stay informed.** You can keep up with general technical information and news by following the [Springboard Series blog](#). Want technical guidance, tips, and tools? Visit the [Springboard Series on TechNet](#).
- **Keep your PC updated:** Be sure to turn on automatic updates in Windows Update in case we publish updates for the 90-day Trial.
- **Microsoft Partners:** Learn more about Windows 7 on the [Microsoft Partner Portal](#).

Minimum System Requirements*:

- 1 GHz or faster 32-bit (x86) or 64-bit (x64) processor
- 1 GB of RAM (32-bit) / 2 GB RAM (64-bit)
- 16 GB available disk space (32-bit) / 20 GB (64-bit)
- DirectX 9 graphics processor with WDDM 1.0 or higher driver
- DVD-compatible drive
- Internet access (fees may apply)

**Note: Some product features of Windows 7, such as the ability to watch and record live TV, BitLocker, or navigation through the use of "touch," may require advanced or additional hardware. Windows XP Mode requires an additional 1 GB of RAM and 15 GB of available disk space; and a processor capable of hardware virtualization, with Intel VT or AMD-V turned on.*

Get the download

The 32-bit and 64-bit versions of Windows 7 are only available in five languages: English, French, German, Japanese, and Spanish. Just choose the version that fits the system you'll be using and pick your language to register for and download the 90-day Trial.

Downloading the Windows 7 Enterprise 90-day Trial could take a few hours. The exact time will depend on your provider, bandwidth, and traffic. The good news is that once you start the download, you won't have to answer any more questions – you can walk away while it finishes. If your download gets interrupted, it will restart where it left off. See this [FAQ](#) for details. For technical questions visit the [Windows 7 support forum](#).

Select the Windows 7 Enterprise 90-day Trial you want to download

Choose between the 32-bit and 64-bit versions, based on the version of Windows you are currently running and your machine's hardware configuration. Check our [FAQ](#) to find which version you should download. Each version is only available in five languages: English, French, German, Japanese, and Spanish.

Download the 32-bit (x86) version: **Download the 64-bit (x64) version:**

GET STARTED NOW >> **GET STARTED NOW >>**

© 2010 Microsoft Corporation. All rights reserved. [Terms of Use](#) | [Trademarks](#) | [Privacy Statement](#) | [Site Feedback](#)

Internet | Protected Mode: On 100%

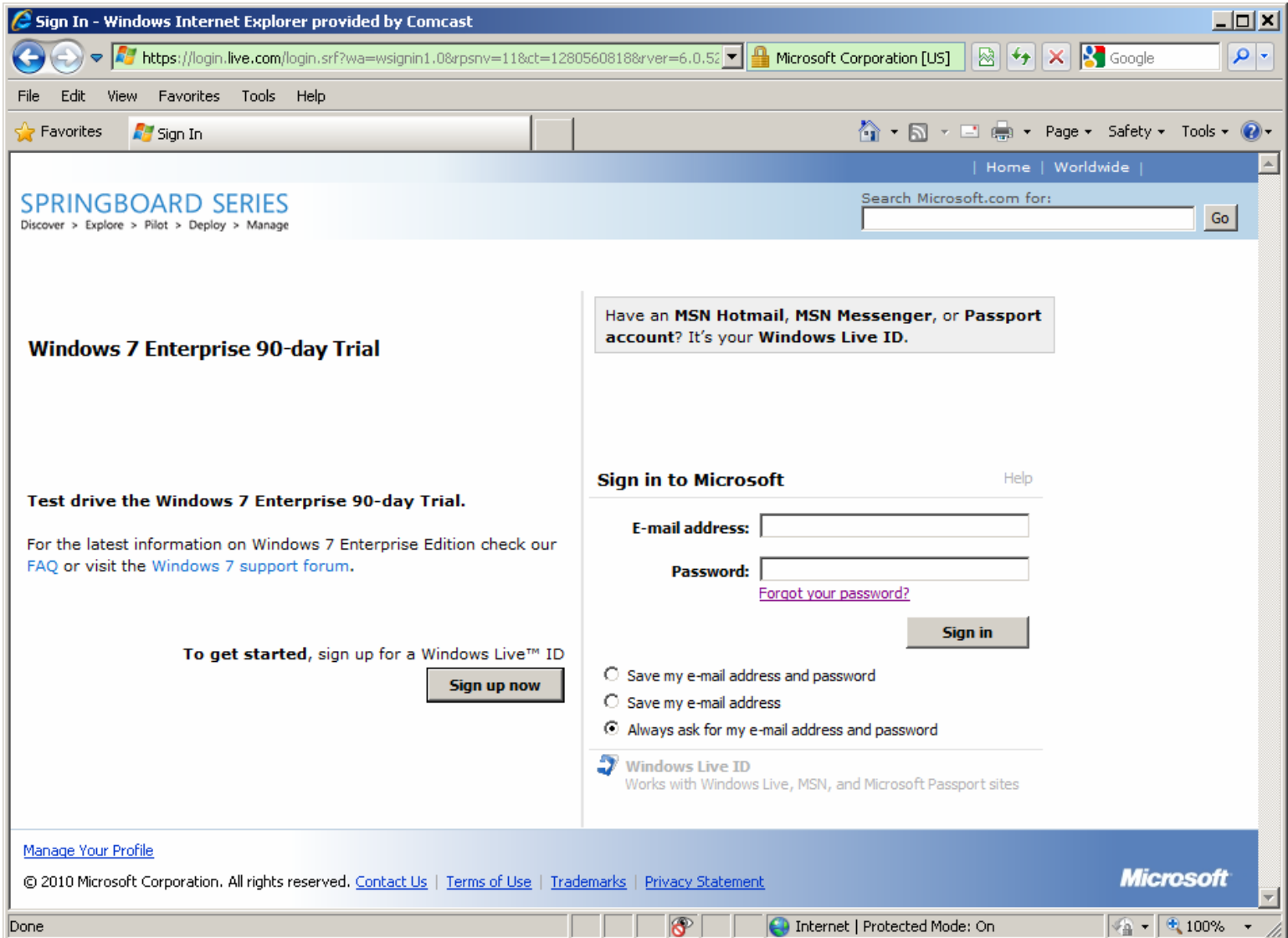
According to the Wikipedia page at http://en.wikipedia.org/wiki/Windows_7_editions, "Windows 7 Enterprise" has the same features as "Windows 7 Ultimate".

Most home and small/medium-sized business users of "Windows 7" will be using "Windows 7 Home Premium" or "Windows 7 Professional".

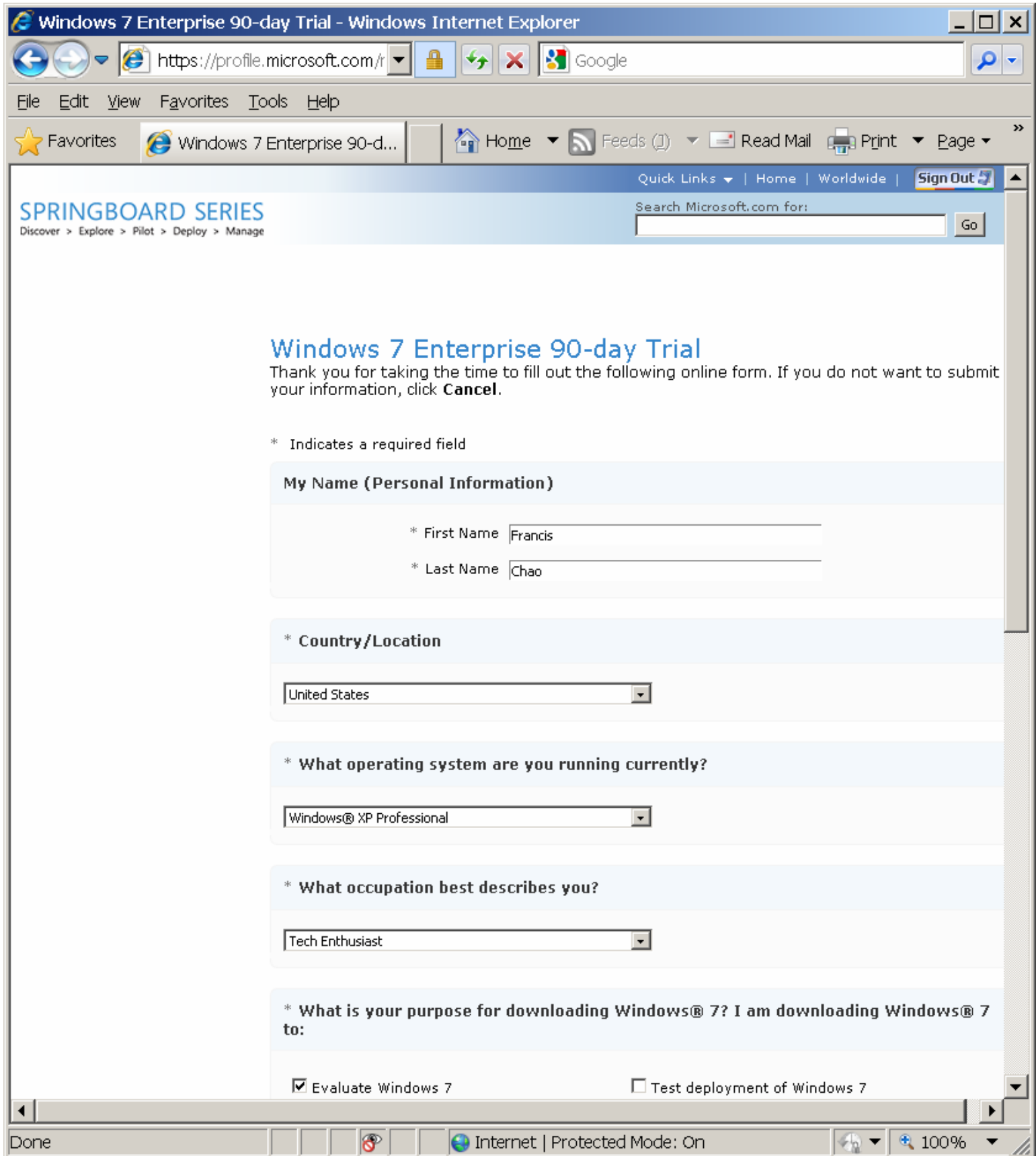
Microsoft's official list of the features in the various editions of "Windows 7" is located at <http://windows.microsoft.com/en-US/windows7/products/compare>. The features that are only available to "Windows 7 Ultimate" and "Windows 7 Enterprise" will rarely be of any interest to

home and small/medium-sized business users of "Windows 7". Don't worry about which version of "Windows 7" you will be trying out, you can ignore the extra features that are part of "Windows 7 Enterprise" and concentrate on the "Windows 7 Home Premium" and/or "Windows 7 Professional" features after you install the "Windows 7 Enterprise" free trial.

After you select either the 32-bit version or the 64-bit version at the bottom of the page, you will arrive at a Web page whereupon you either have to log in with your existing "Hotmail" or "Windows Live" account or you have to create one:



After you get past this page, you finally arrive at a page where you have to give them some information:



Start filling in this online form.

When you get to the "What occupation describes you?" question, you have to answer with one of the correct answers.

The correct answers are:

IT Manager

IT Worker

Developer

Non IT Manager

The incorrect answers are:

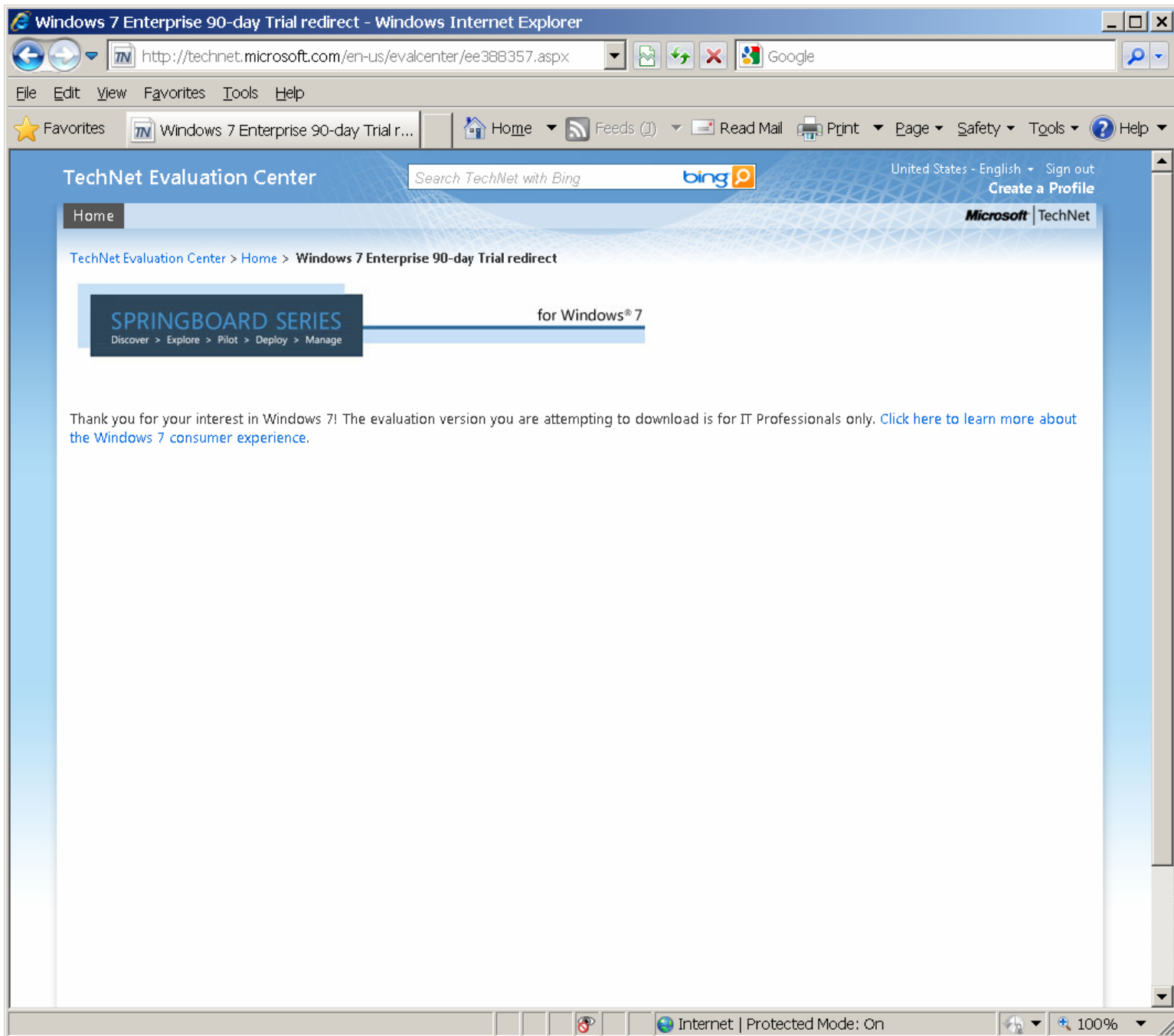
Consumer

Student

Tech Enthusiast

Other

If you answer with an incorrect answer, you get the following unfriendly notification:



Click on the "Continue" button at the bottom of the form.
A second online form will be displayed.
Fill in this online form also.
Click on the "Continue" button at the bottom of this form.


Windows 7 Enterprise Trial Download Center - Windows Internet Explorer provided by Comcast

http://wb.dlservice.microsoft.com/download/release/Win7/3/b/a/3bac7d87-8ad2-4b7a-87b3-def36aee35fa/7600.16385.0

Google

Windows 7 Enterprise Trial Download Center

This website wants to run the following add-on: 'Download Manager ActiveX Control' from 'Akamai Technologies, Inc. (unverified publisher)'. If you trust the website and the add-on and want to allow it to run, click here...



Please wait while the Download Manager begins your download.

Downloading the Windows 7 Enterprise could take a few hours. The exact time will depend on your provider, bandwidth and traffic. The good news is that once you start the download, you won't have to answer any more questions – you can walk away while it finishes. If it gets interrupted, it'll restart where it left off.

Please review our [FAQ](#), the [Windows 7 support forum](#) or the [Springboard Series blog](#).

If you have not already installed ActiveX control or the Java™ applet, an information box will appear in your Microsoft Internet Explorer browser prompting you to install "ActiveX control:...".

If the Download Manager can not install the ActiveX control or the Java™ applet in your browser, you may have system restrictions.

If you have system restrictions, please:

- Download products using the Web Browser method
- Contact your organization's Administrator to download products using the Download Manager method

Done

Internet | Protected Mode: On

100%

Click on the yellow notice at the top of the next Web page that is shown. Click on "Run Add-on" in the popup context menu to install the "Download Manager" from Akamai Technologies.

Internet Explorer - Security Warning



Do you want to run this ActiveX control?

Name: Download Manager ActiveX Control

Publisher: **Akamai Technologies, Inc. (unverified publisher)**

Run

Don't Run



This ActiveX control was previously added to your computer when you installed another program, or when Windows was installed. You should only run it if you trust the publisher and the website requesting it. [What's the risk?](#)

If an "Internet Explorer - Security Warning" is shown, click on its "Run" button.


Windows 7 Enterprise Trial Download Center - Windows Internet Explorer provided by Comcast

http://wb.dlservice.microsoft.com/download/release/Win7/3/b/a/3bac7d87-8ad2-4b7a-87b3-def36aee35fa/7600.16385.0

Google

Windows 7 Enterprise Trial Download Center

This website wants to install the following add-on: 'Download Manager' from 'Akamai Technologies Inc.'. If you trust the website and the add-on and want to install it, click here...



Please wait while the Download Manager begins your download.

Downloading the Windows 7 Enterprise could take a few hours. The exact time will depend on your provider, bandwidth and traffic. The good news is that once you start the download, you won't have to answer any more questions - you can walk away while it finishes. If it gets interrupted, it'll restart where it left off.

Please review our [FAQ](#), the [Windows 7 support forum](#) or the [Springboard Series blog](#).

If you have not already installed ActiveX control or the Java™ applet, an information box will appear in your Microsoft Internet Explorer browser prompting you to install "ActiveX control:...".

If the Download Manager can not install the ActiveX control or the Java™ applet in your browser, you may have system restrictions. If you have system restrictions, please:

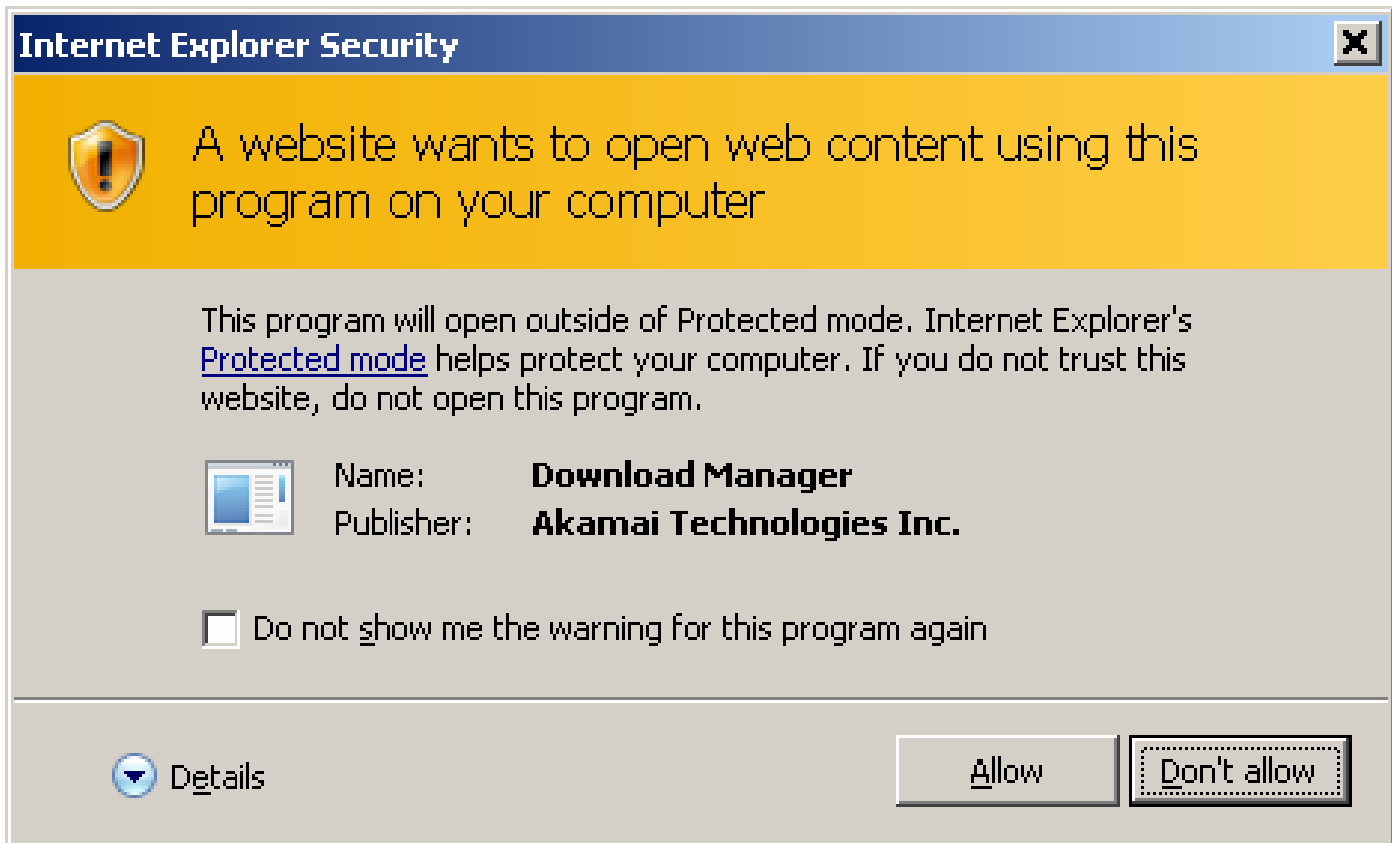
- Download products using the Web Browser method
- Contact your organization's Administrator to download products using the Download Manager method

Done

Internet | Protected Mode: On

100%

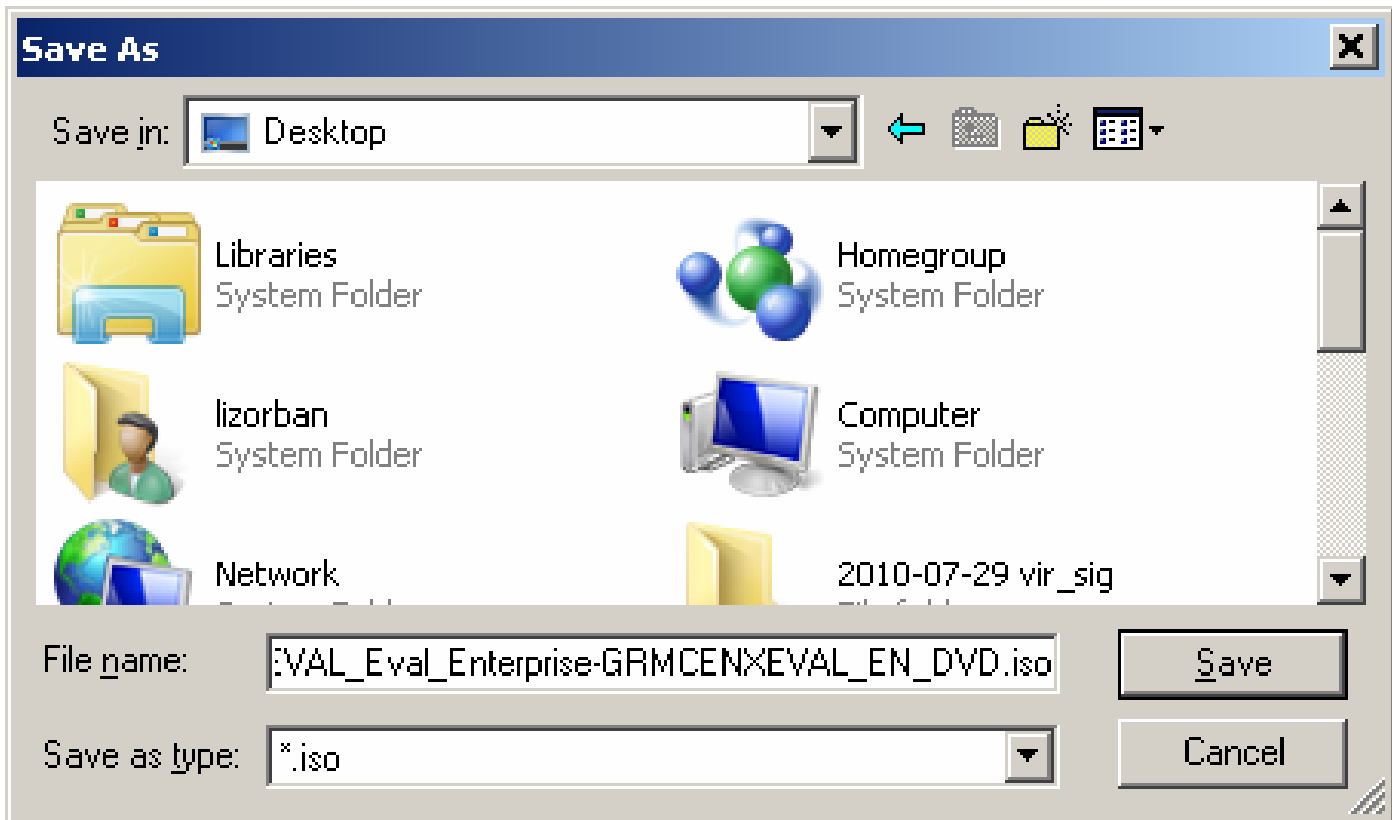
Click on the yellow notice at the top of the next Web page that is shown. Click on "Install this Add-on for All Users on This Computer.." in the popup context menu to install the "Download Manager" from Akamai Technologies.



Click on Allow if an "Internet Explorer Security" box is shown.

A "Save As" box will be displayed.

Change the "Save in:" field to "Desktop" by using its drop down arrow button:



Click on the "Save" button.

An *.iso file that represents the installation DVD for "Windows 7 Enterprise" will be downloaded to the Windows "Desktop" of your computer.

ALTERNATIVE STRATEGIES FOR INSTALLING THE "WINDOWS 7 ENTERPRISE TRIAL"

After you download your free trial copy of "Windows 7 Enterprise", you have to decide where you want to install it.

You probably should not install the "Windows 7 Enterprise" directly onto any existing Windows computer, since the "Windows 7 Enterprise trial" does not provide with you with a way revert back to the original version of Windows when the "Windows 7 Enterprise trial" expires.

Strategy 1:

If you have a spare computer to install the "Windows 7 Enterprise trial" into, then it will be a good safe place for you to install into.

Strategy 2:

If you have a spare hard drive for an existing computer, you can install "Windows 7 Enterprise trial" onto the spare hard drive. After installing "Windows 7 Enterprise trial" onto the spare hard drive, you then have to switch between your current version of "Windows" on your regular hard drive and the "Windows 7 Enterprise trial" on your spare hard drive.

There are two methods to switch between hard drives for any single computer:

Method 1 for Strategy 2:

Switch the SATA cable, eSATA cable, or IDE cable from one drive to the other drive. Then, switch the power cable from one drive to the other drive.

Method 2 for Strategy 2:

Use a drive swap tray to switch between your regular hard drive and the hard drive that contains the "Windows 7 Enterprise trial".

Lots of companies make drive swap trays for IDE hard drives.

"Vantec" makes "EZ Swap" drive swap trays for SATA hard drives. See

http://www.vantecusa.com/en/product/pro_list/62

and

<http://www.newegg.com/Product/ProductList.aspx?Submit=ENE&DEPA=0&Order=BESTMATCH&Description=vantec+ez+swap>

Strategy 3:

Use "Acronis True Image Home.." or "Macrium Reflect Free" to temporarily store your existing copy of Windows on an external hard drive. Then install the "Windows 7 Enterprise trial" over your current copy of Windows. When the "Windows 7 Enterprise trial" expires, use the "Restore" or "Rescue" media CD of "Acronis.." or "Macrium.." and the image backup files on the external hard drive to restore your original copy of Windows:

Step 1:

Use drive imaging software "Acronis True Image Home.." or "Macrium Reflect Free" to back up your existing Windows computer to an external hard drive.

Step 2:

Download and install the "Windows 7 Enterprise trial" onto your existing Windows computer.

Step 3:

Evaluate the "Windows 7 Enterprise trial" for 90, 180, or 600 days. During this evaluation period, do not install any commercial software that requires "activation" since you will lose any such software when you get to "Step 4".

Step 4:

After the "Windows 7 Enterprise trial" expires, use the "Rescue Media" or "Restore" Cd of Acronis.. or Macrium.. to boot up your computer and restore the image that you made in "Step 1". You will now be back to the original operating system that you had back in "Step 1".

Strategy 4:

You can install the "Windows 7 Enterprise" as a "virtual machine" also known as a "guest operating system" into either "Oracle VM VirtualBox" or "VMware Player 3.1". These two amazing free software applications can be installed into either Windows or Linux computers. Using "..VirtualBox" or "VMware Player 3.1", you get a virtual computer inside an existing computer and you will not need a separate physical computer or separate physical hard drive for installing "Windows 7 Enterprise trial".

At the present time, we recommend that you use "VMware Player 3.1" instead of "..VirtualBox".

"VMware Player.." gives you more reliable control over physical/actual USB devices compared to "VirtualBox..". "VMware Player.." gives you more reliable control over physical/actual devices such as IDE or SATA-connected DVD/CD and hard drives compared to "VirtualBox..". "VMware Player.." provides you with a configurable virtual network router which allows you do set up or deny file and printer sharing between multiple virtual machines and between virtual machines and the host computer. "VirtualBox" does not allow file and printer sharing between virtual machines. "VirtualBox" does not allow file and printer sharing between virtual machines and the host computer. To download "VMware Player 3.1" for Windows, go to

http://downloads.vmware.com/d/info/desktop_downloads/vmware_player/3_0

In order to download "VMware Player 3.1" from this site, you have to either log in with your existing "VMware account" or register for one, if you do not already have one. "VMware accounts" are free.




Our step-by-step instructions for installing "Windows 7 Enterprise trial" as a "virtual machine" guest operating system inside "VMware Player.." is available at http://aztcs.org/meeting_notes/winhardsig/win7intovmware/win7intovmware.htm


Our step-by-step instructions for installing "Windows 7 Enterprise trial" as a "virtual machine" guest operating system inside "Oracle VM VirtualBox" is available at http://aztcs.org/meeting_notes/winhardsig/win7intovirtualbox/win7intovirtualbox.htm


YOU CANNOT INSTALL "WINDOWS 7 ENTERPRISE TRIAL" INTO AN EXTERNAL USB OR FIREWIRE HARD DRIVE


During the installation of "Windows 7 Enterprise trial", you arrive a "Where do you want to install Windows?" screen:


Where do you want to install Windows?


	Name	Total Size	Free Space	Type
	Disk 0 Partition 1: Recovery	9.0 GB	853.0 MB	OEM (Reserved)
	Disk 0 Partition 2	223.9 GB	25.4 GB	System
	Disk 1 Partition 1: old F_9VP0QQHT	931.5 GB	917.3 GB	Primary


 Refresh


 Delete

 Format

 New

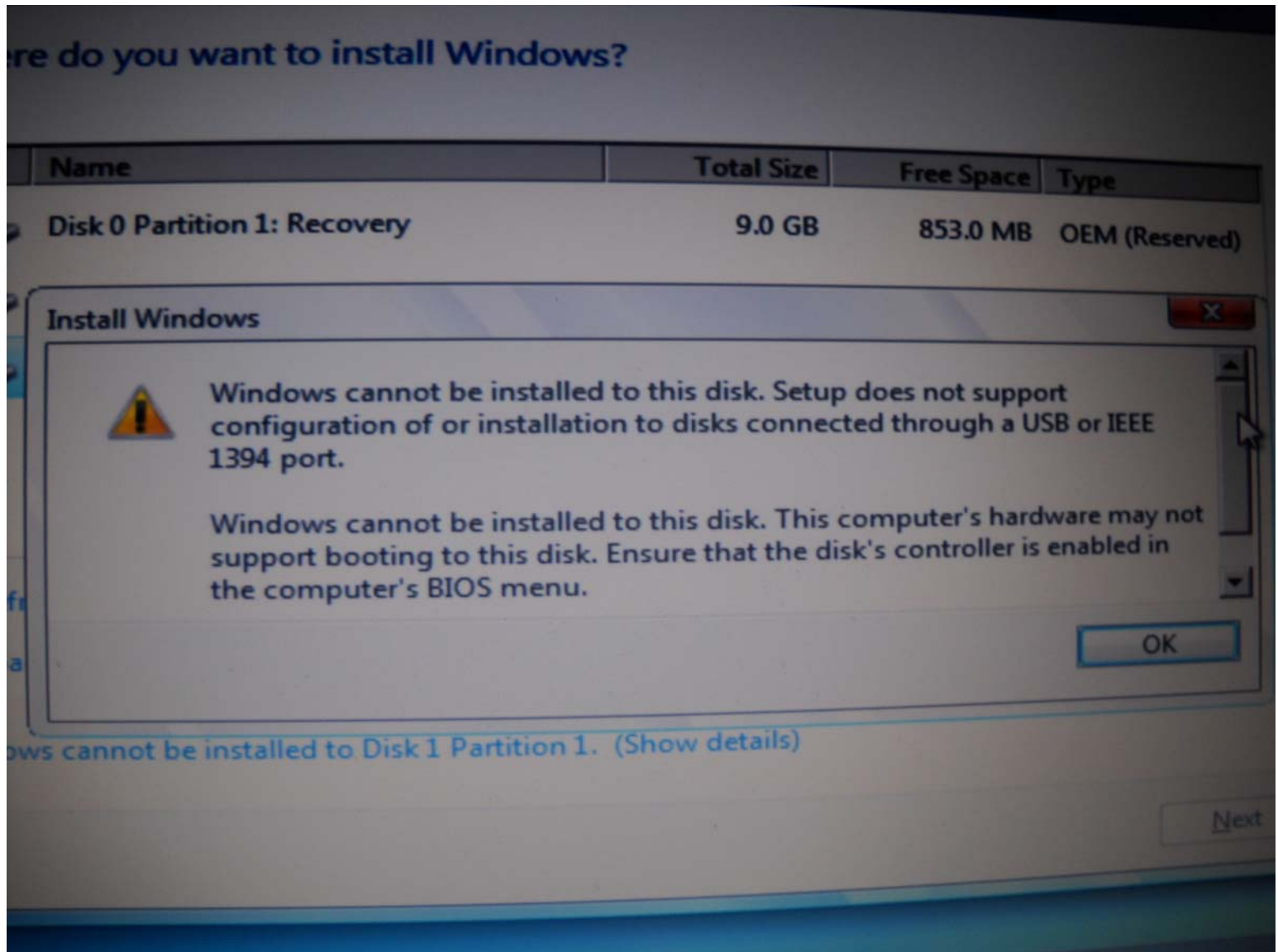
 Load Driver

 Extend

 Windows cannot be installed to Disk 1 Partition 1. (Show details)

Next

If you try to get the "Windows 7 Enterprise trial" installation wizard to install into an external USB or Firewire hard drive, you get the following notification:



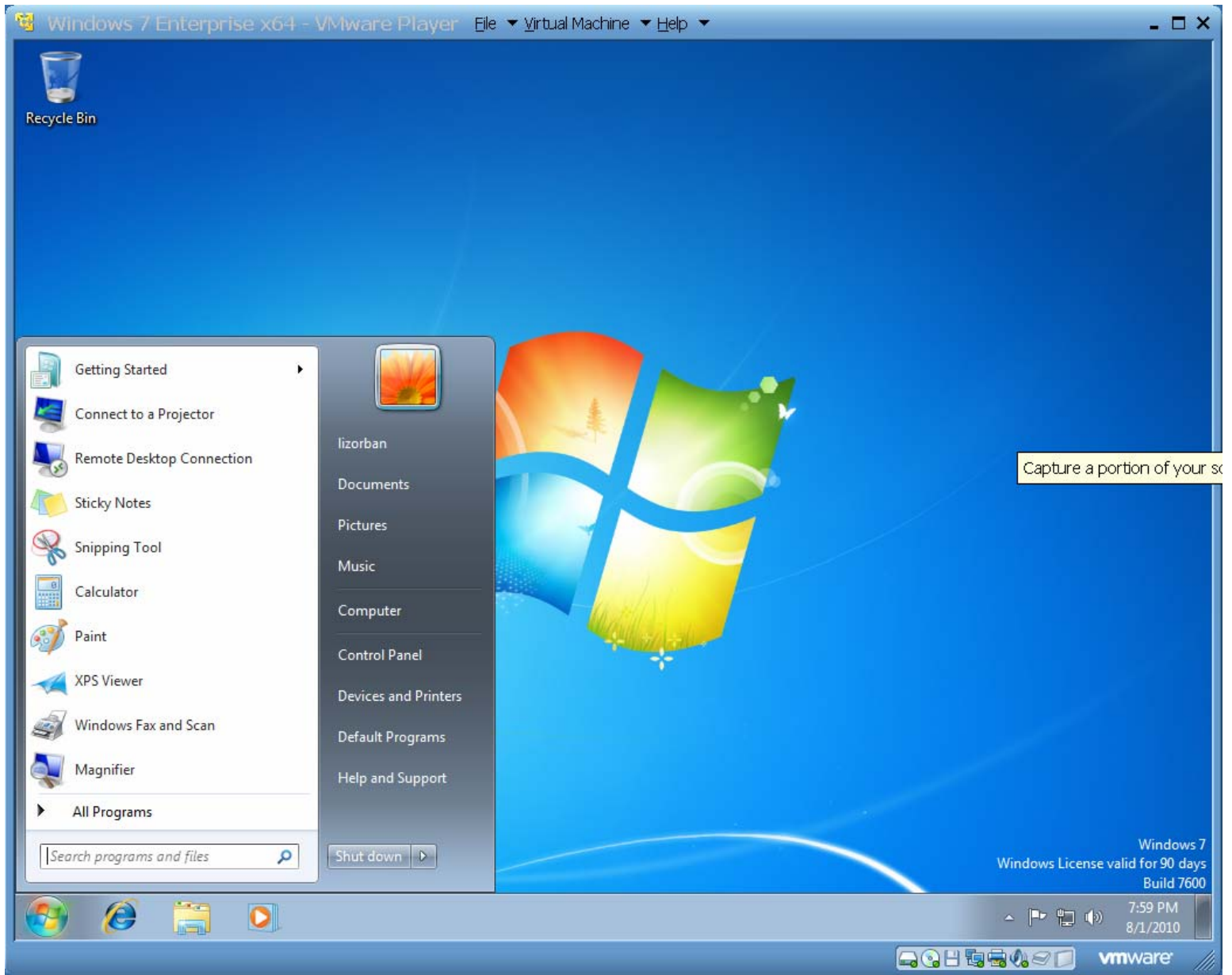
DETERMINING HOW MANY DAYS YOU HAVE REMAINING FOR YOUR "WINDOWS 7 ENTERPRISE TRIAL"

Step 1:

Start up "Windows 7 Enterprise Trial".

Step 2:

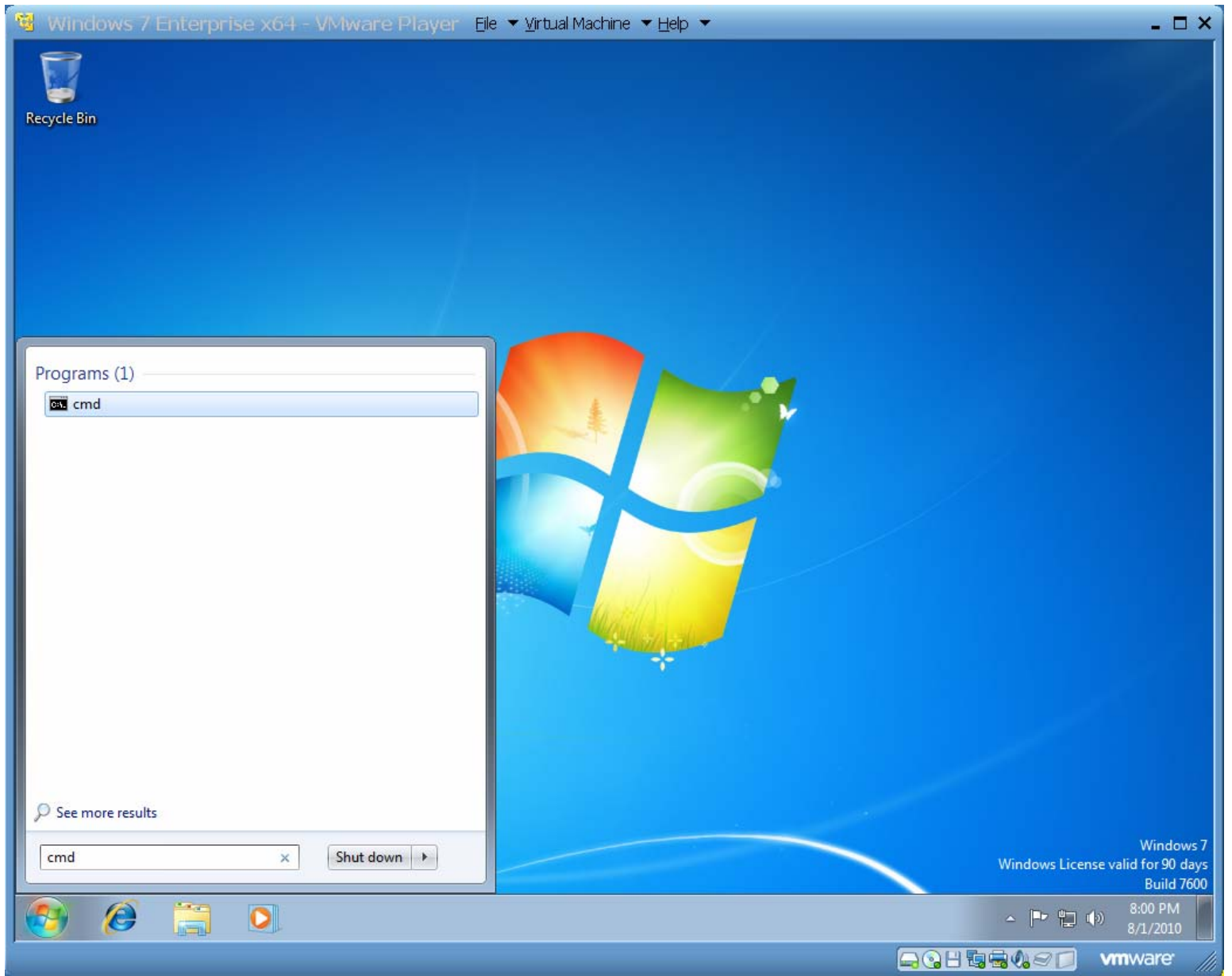
Click on the Windows "Start" button:



Step 3:

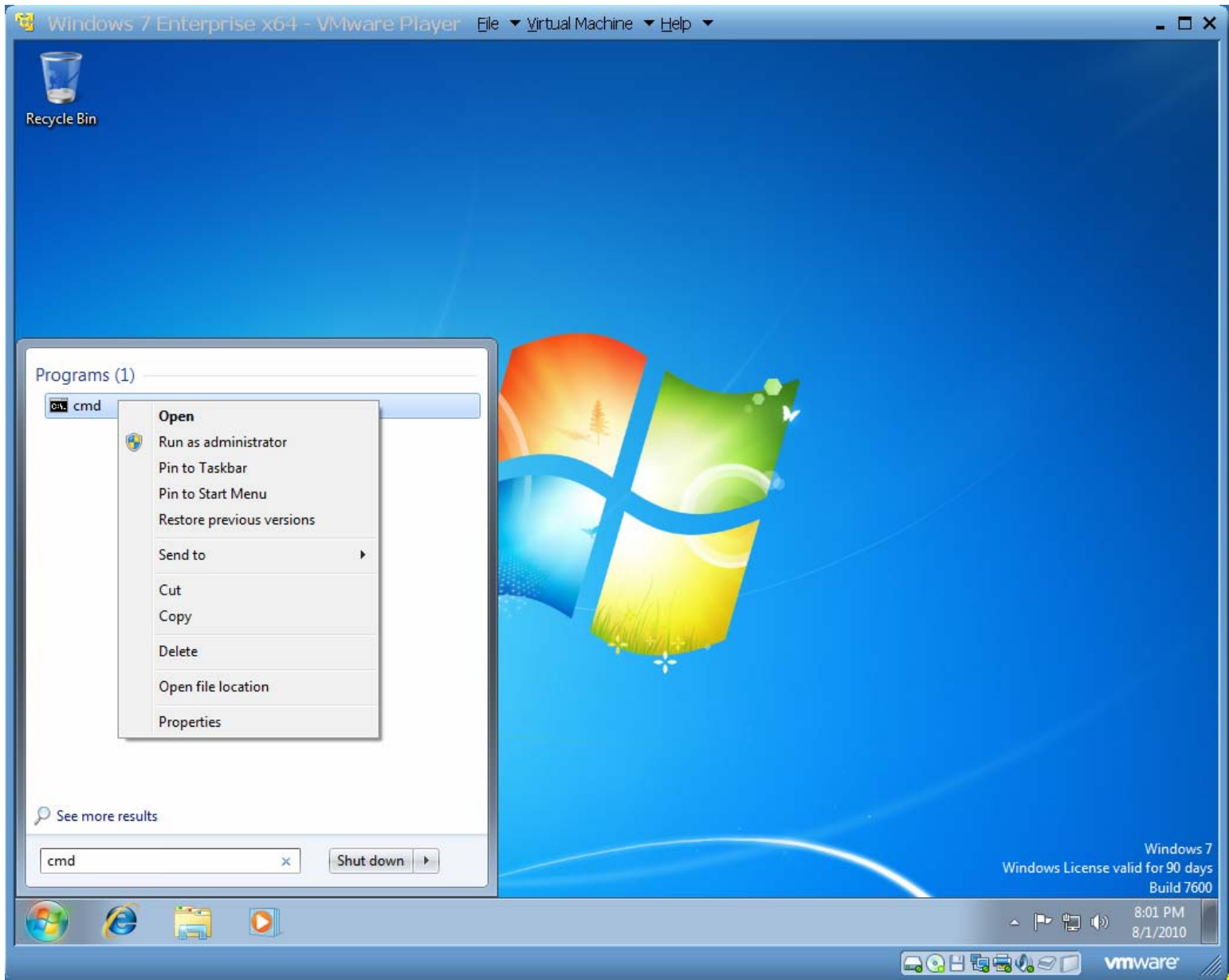
Type
cmd

into the "Search" box or the "Run" box:



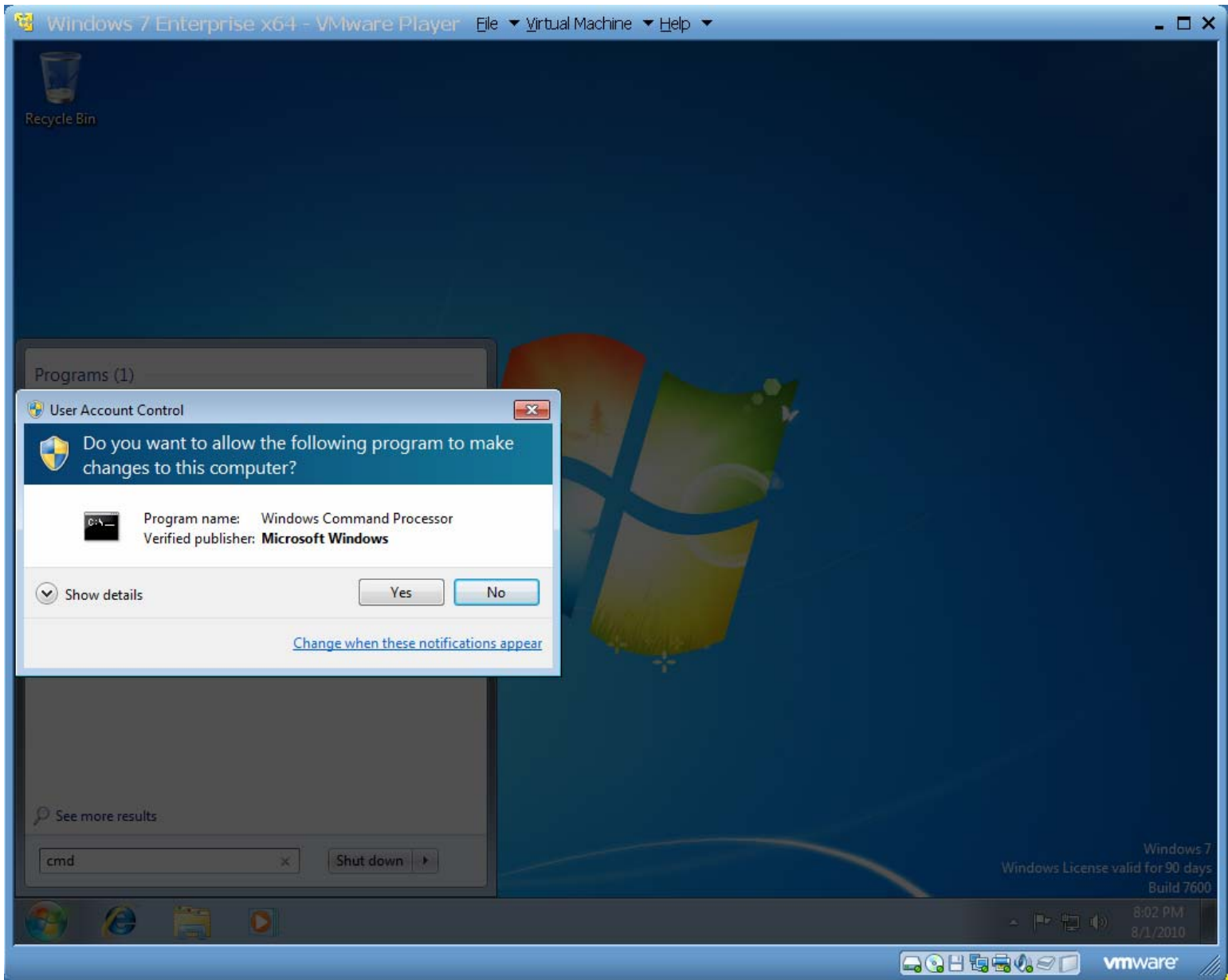
Step 4:

Use your RIGHT mouse button to perform a click on "cmd":



Step 5:

Click on "Run as administrator" on the popup context menu.

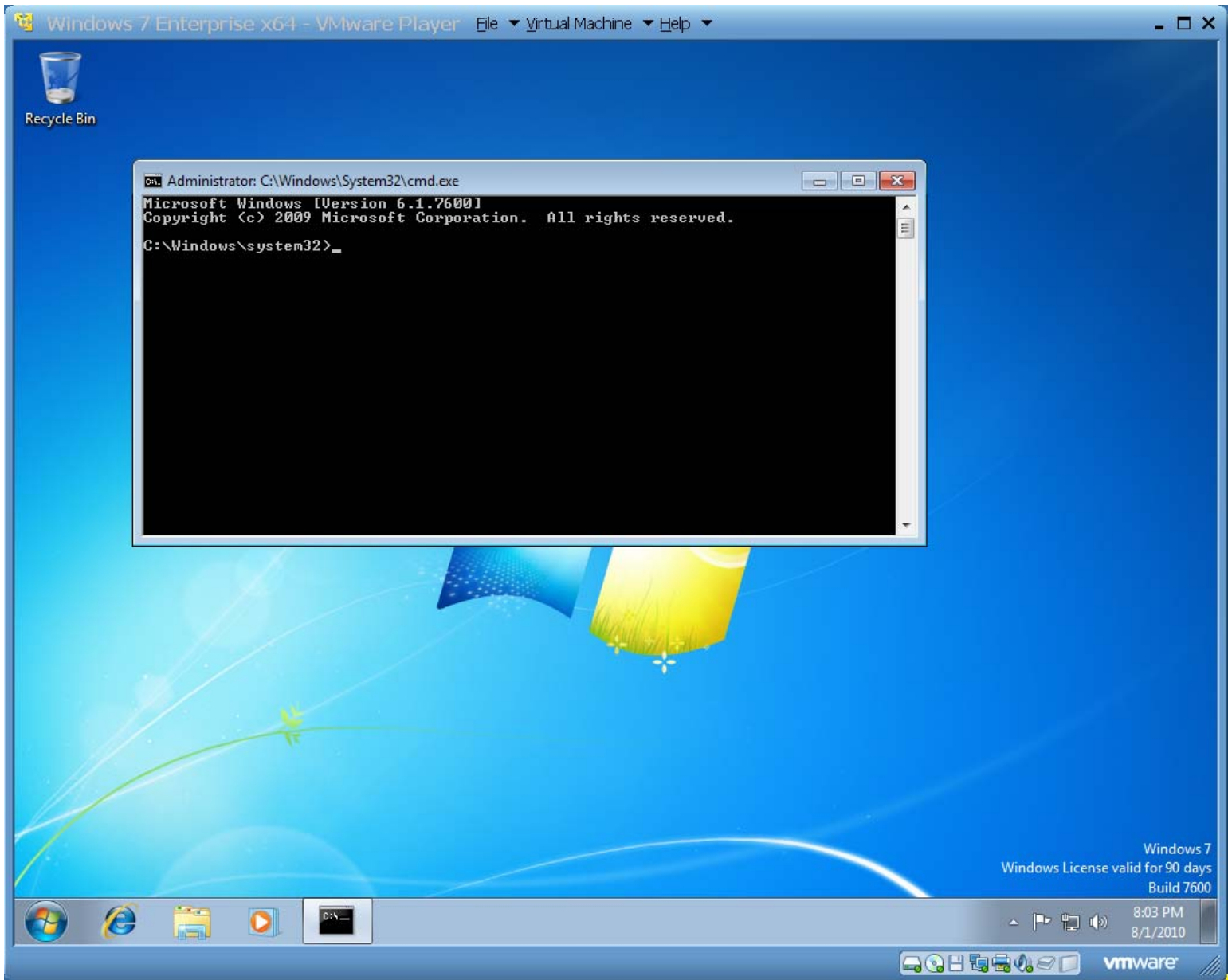


Step 6:

Click on the "Yes" button of the "User Account Control" box.'

Step 7:

Click on the "Yes" button of the "User Account Control" box.'



Step 8:

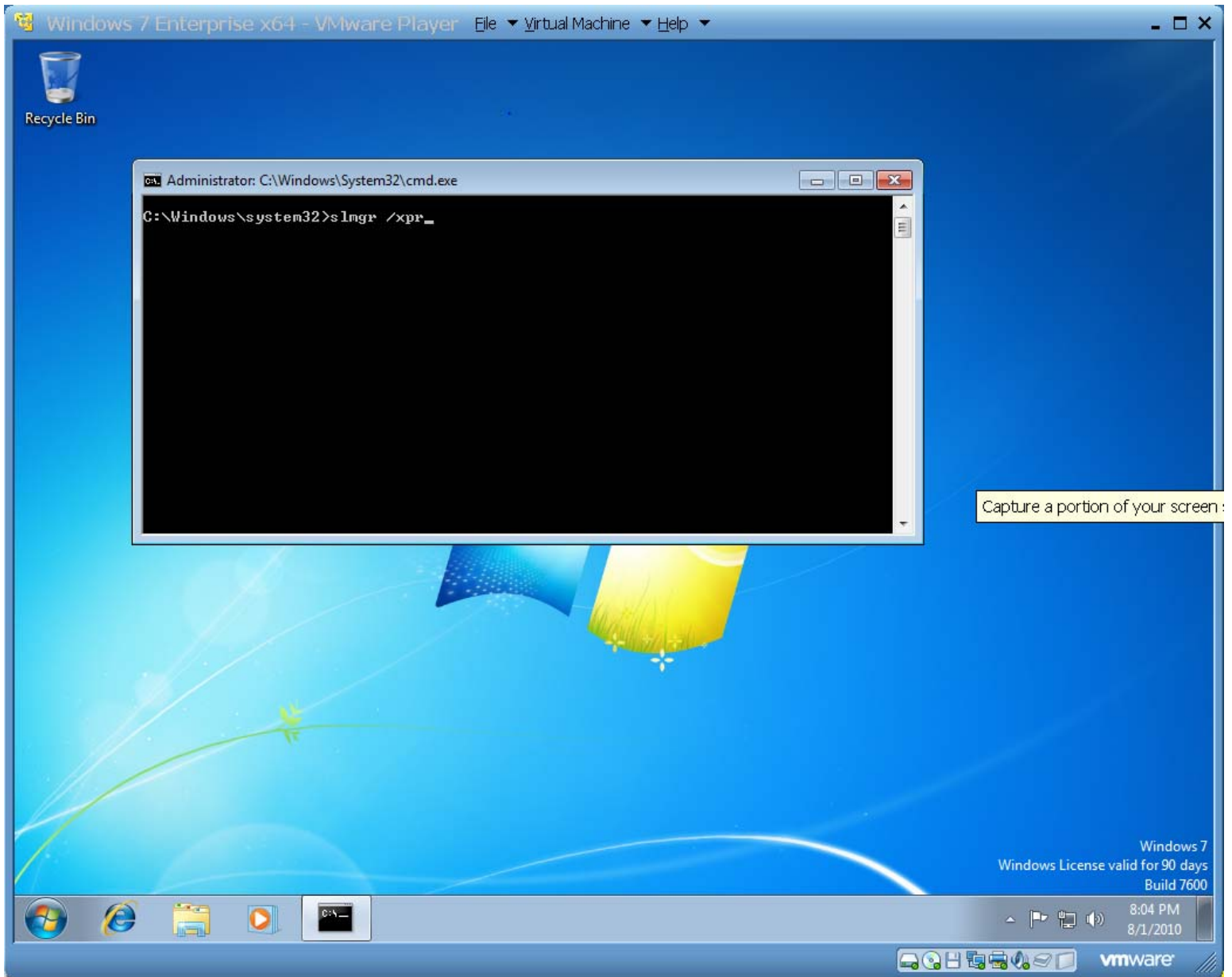
A black "Command Prompt" window will be displayed.

Step 9:

Type in

slmgr /xpr

(there must be at least one space between "r" and "/").

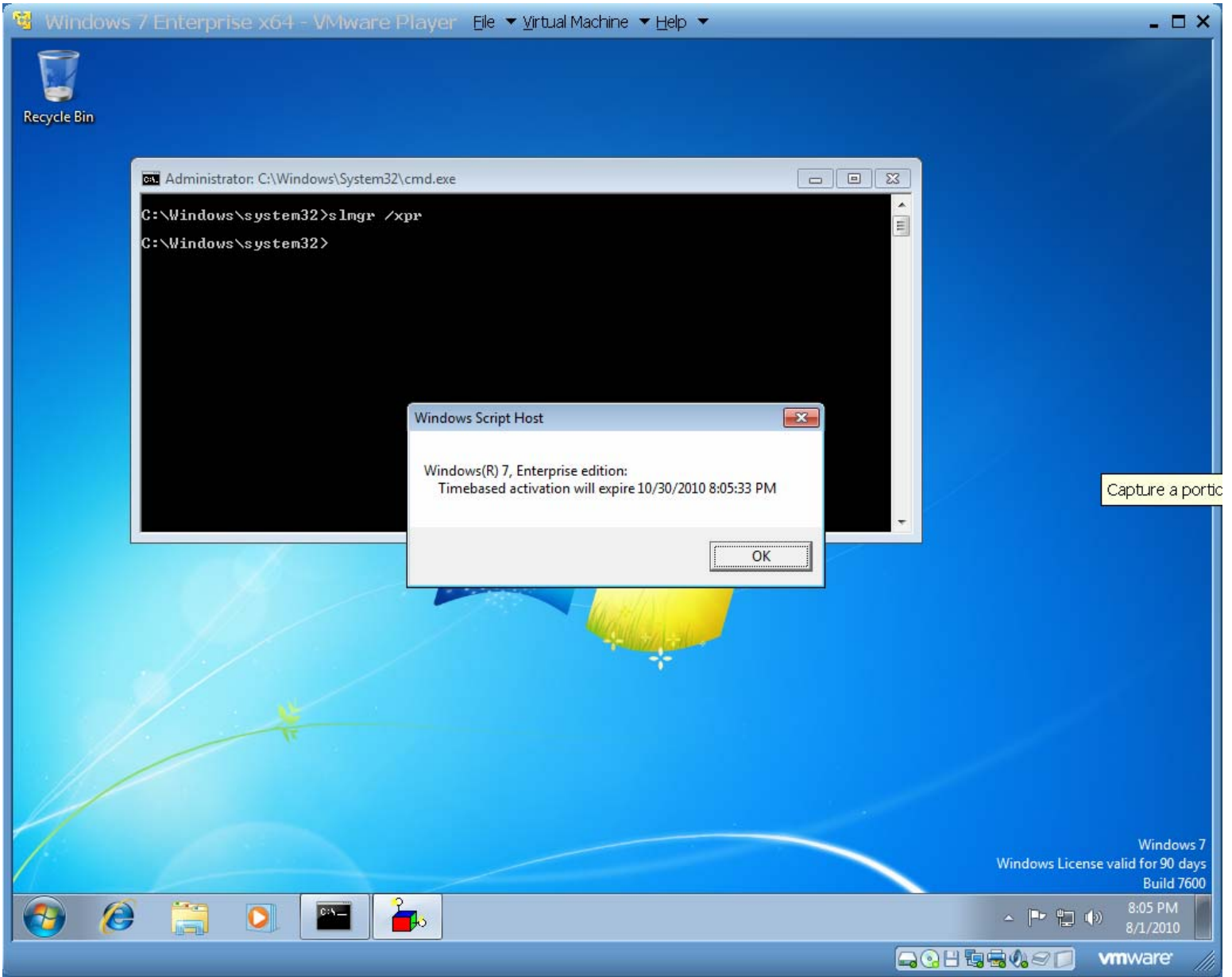


Step 10:

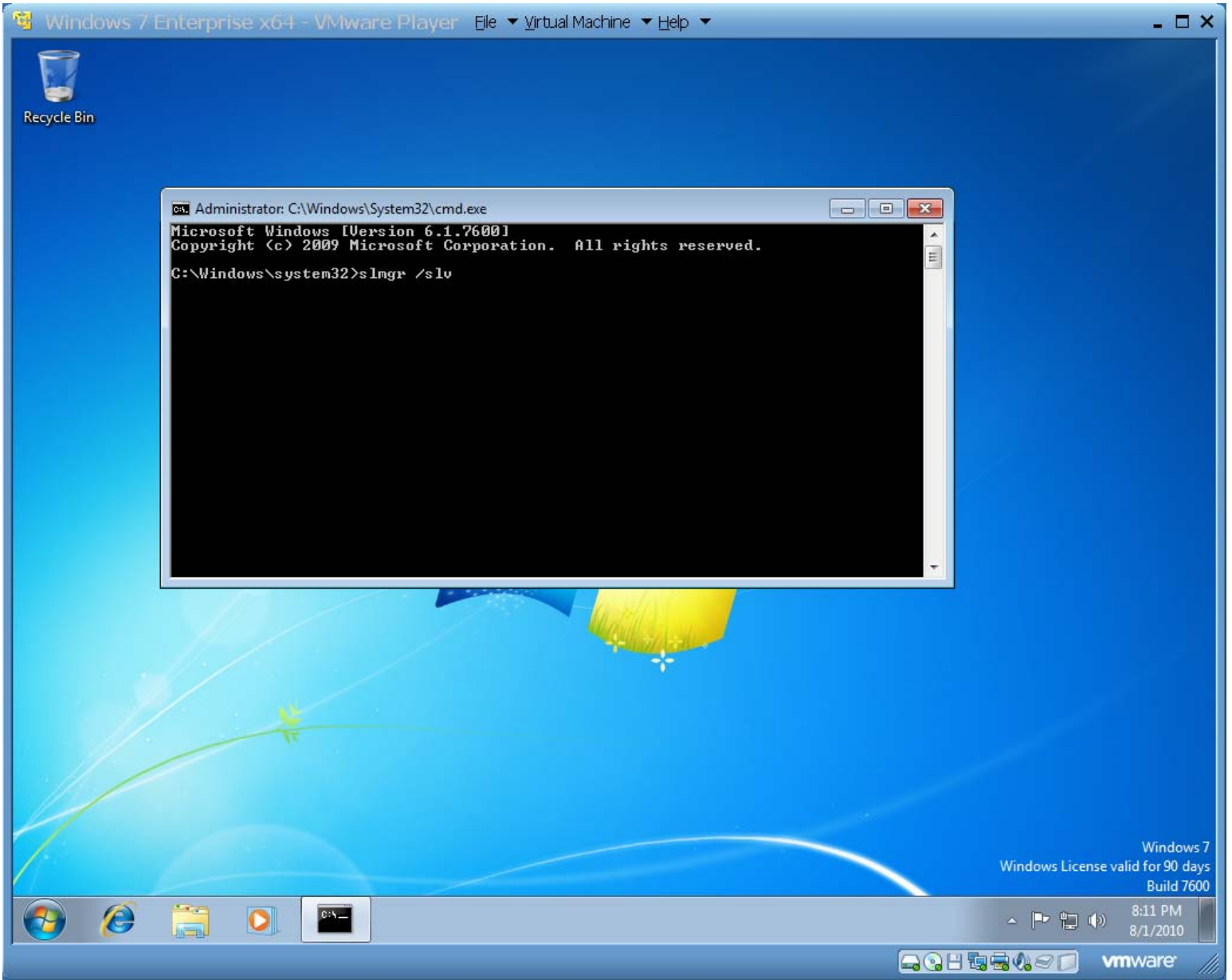
Press the <Enter> key of your keyboard.

Step 11:

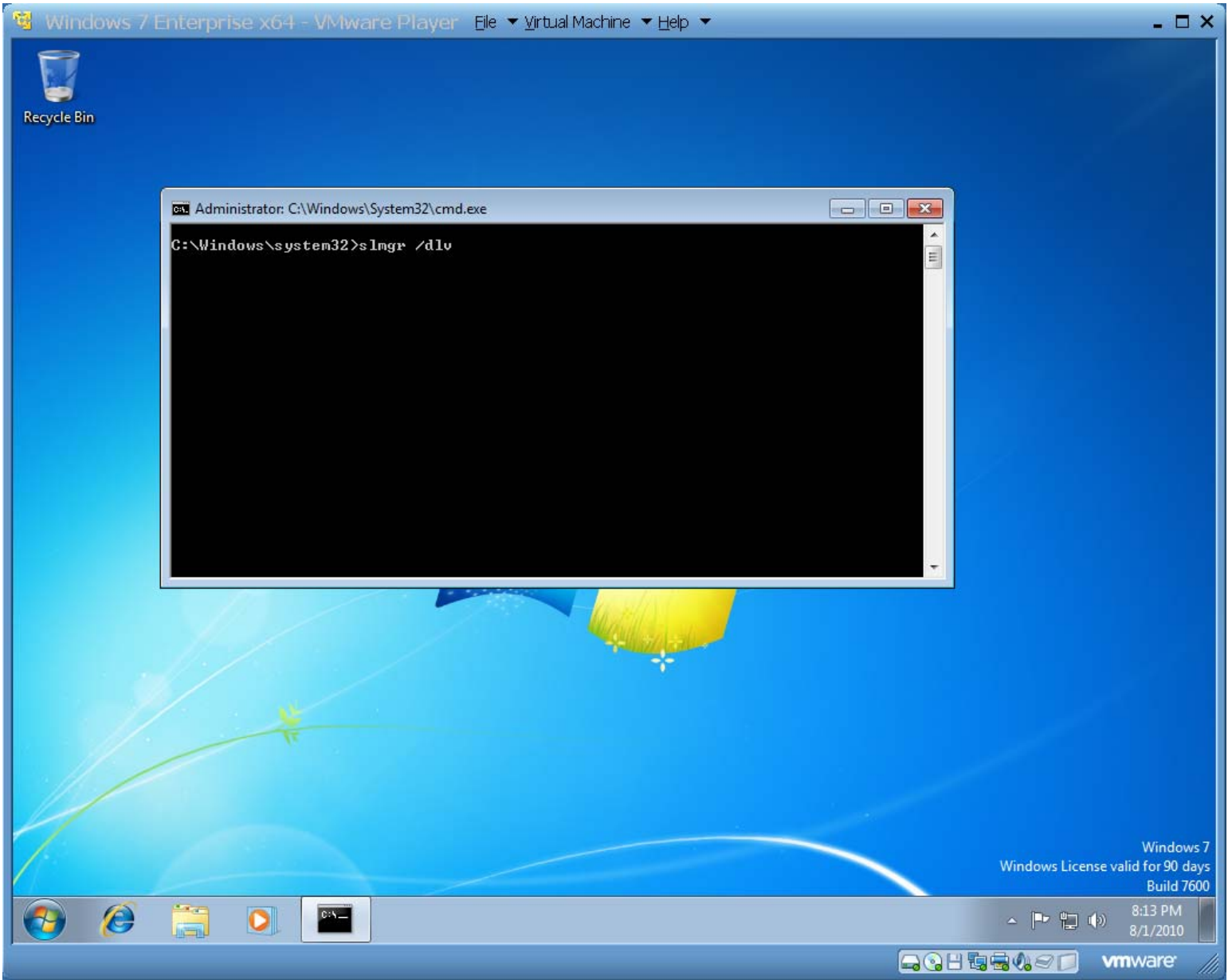
A "Windows Script Host" box will pop up. It will display the expiration date for your "Windows 7 Enterprise trial".

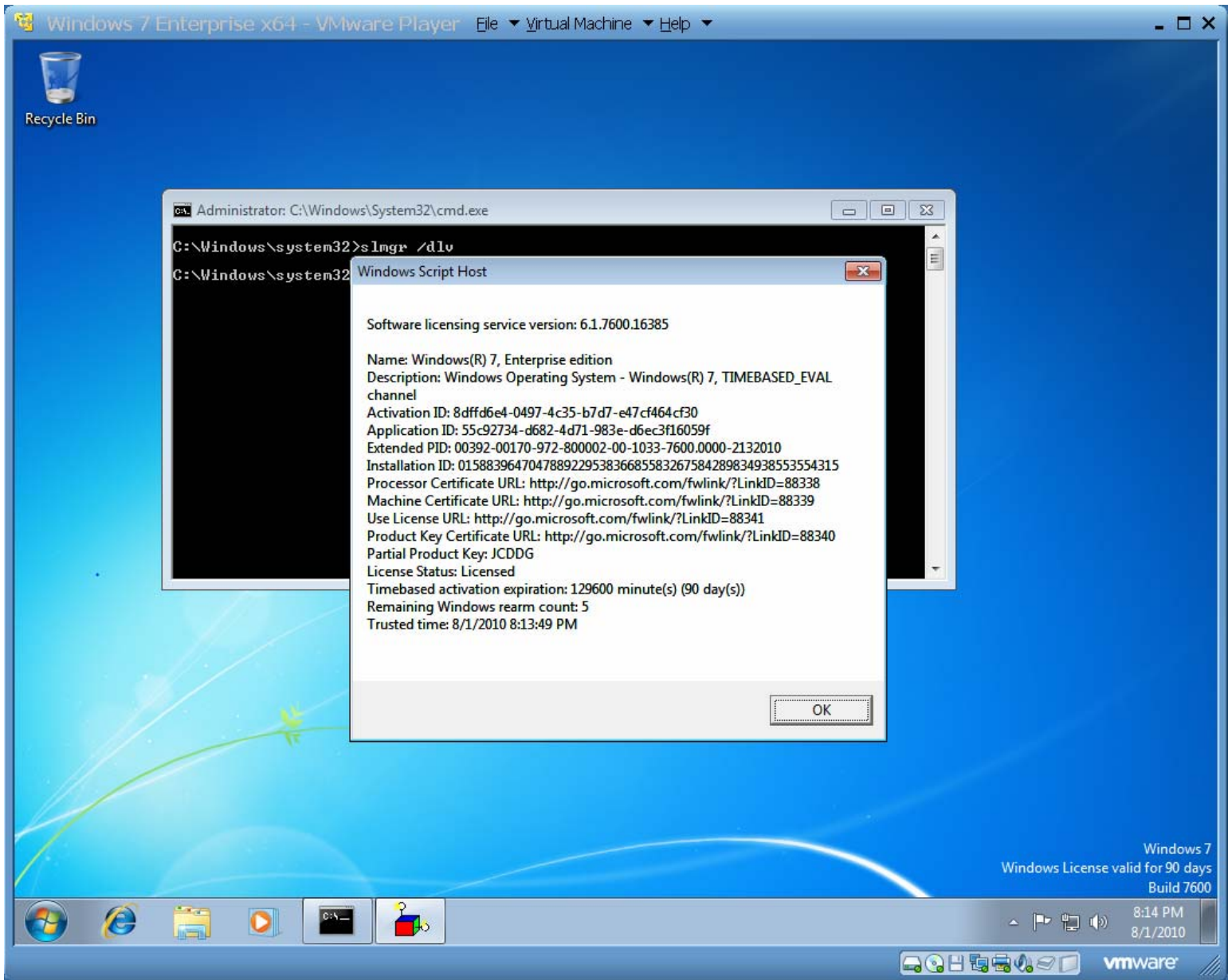


*
*



*

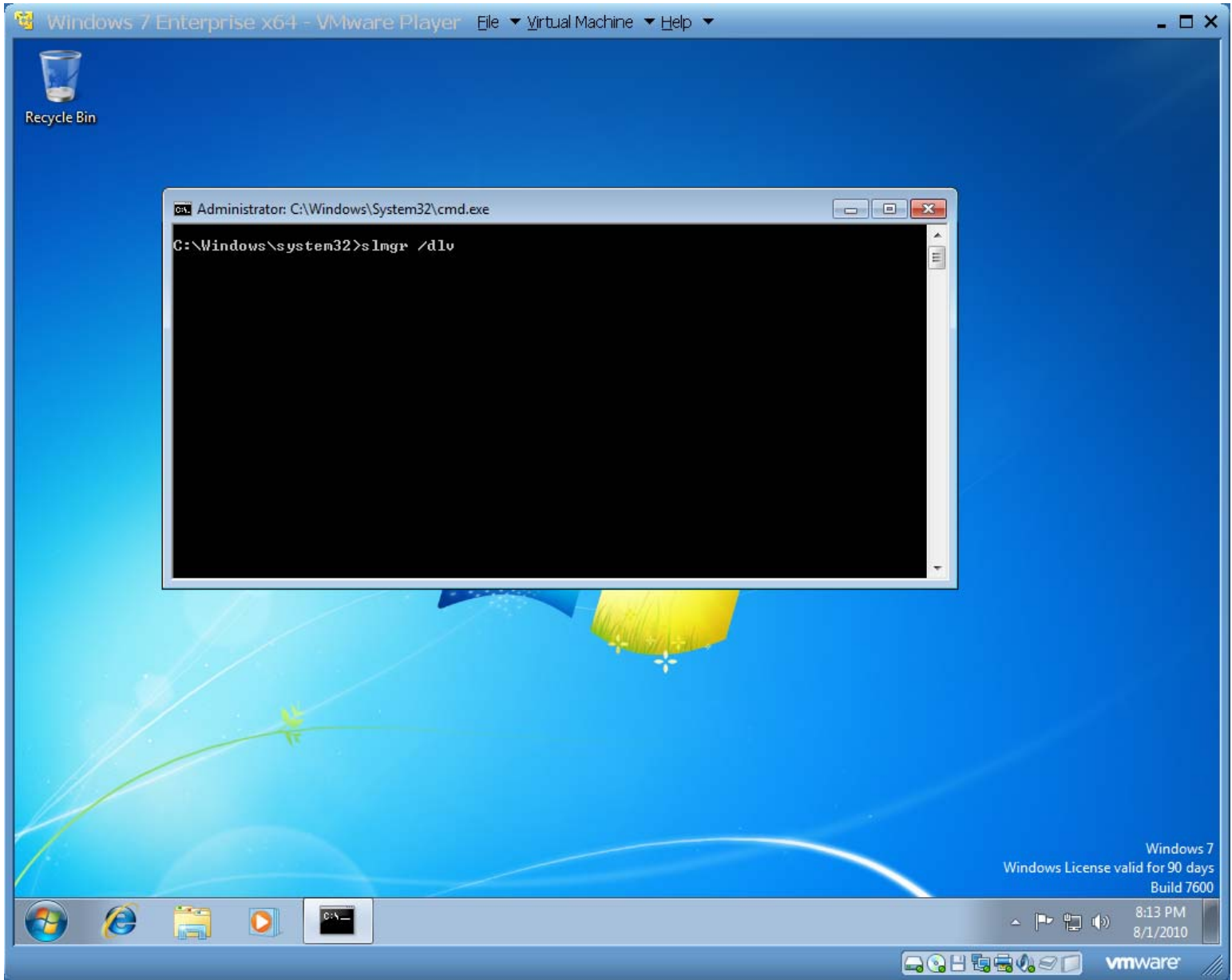




EXTENDING THE TRIAL PERIOD OF THE "WINDOWS 7 ENTERPRISE TRIAL"

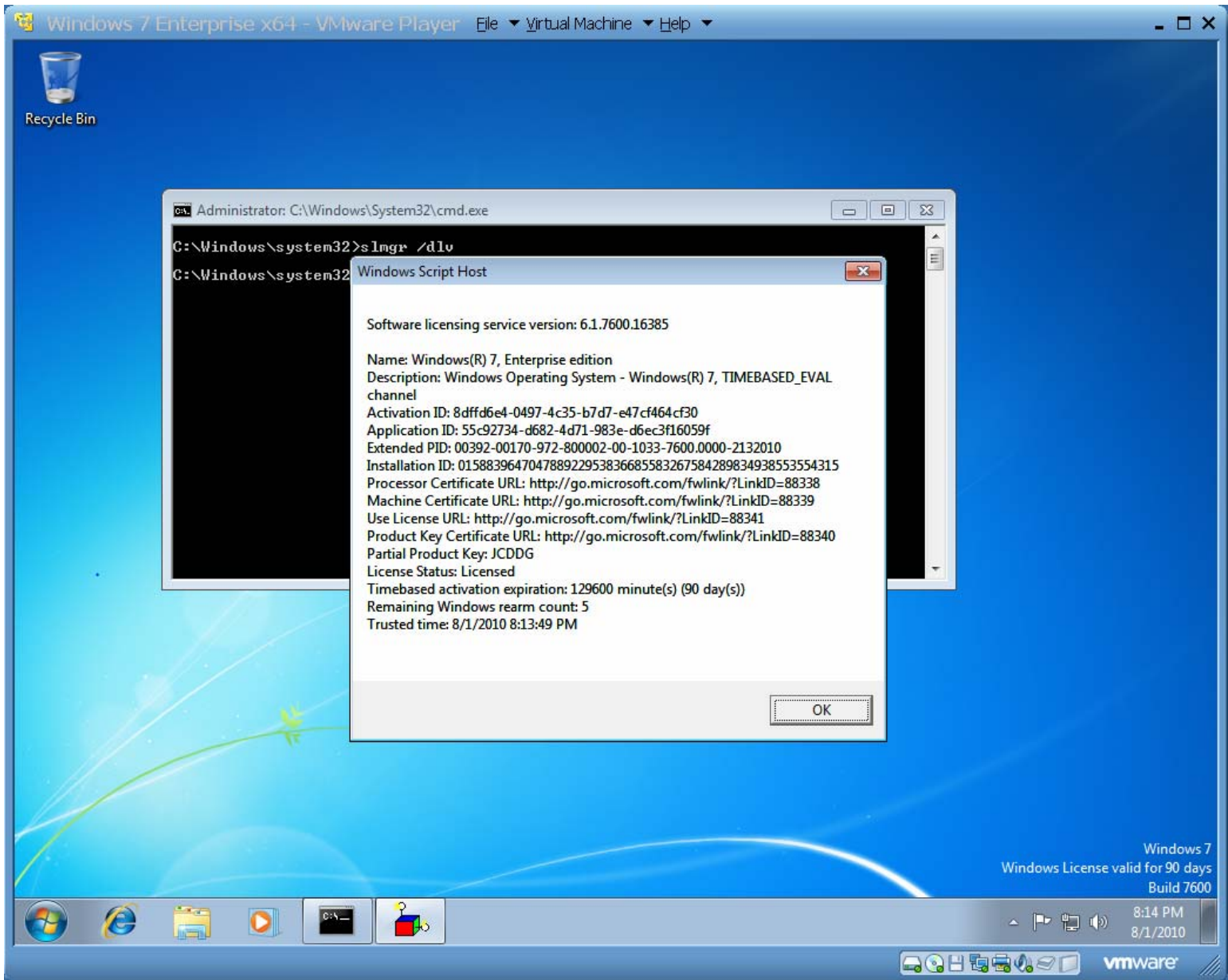
You might be able to open a "Command Prompt" window and use the `slmgr -rearm` command to extend the trial period of the "Windows 7 Enterprise trial".

If you type in
slmgr /dlv
and then press the <enter> key:



*

Note that the "Windows Script Host" window shows a "rearm count" of "5":



See

<http://www.oqotalk.com/index.php/topic,4767.msg38964.html>

and

<http://social.technet.microsoft.com/Forums/en-US/w7itproinstall/thread/b7a251b8-02df-48a5-86ad-f5f2ca69ffe1>

and

<http://www.sevenforums.com/general-discussion/53471-windows-7-enterprise-rearm.html>

and

<http://www.vistaviews.net/frj/win7-64ent.htm>

